

# THE WARBURG BUGLE



## RCMP warn public about online job scams

RCMP are warning the public to do their research before sending personal information when applying for online job postings, and never to send cash.

RCMP received the report of this particular online job scam on August 8 after a Red Deer man applied for a construction job he saw posted online. He was asked for his personal information and then asked for a \$25 fee to process his application. This request roused suspicion, and follow-up research showed that the company name being used in the online ad had previously been a legitimate business but was no longer operating. Other online job scams previously reported have also involved the illegitimate use of legitimate company names, or have involved job seekers being asked to make suspicious money transfers or pass bad cheques.

RCMP would like to remind job seekers that it is not common practice to pay money to apply for a job, and that it is important to do your research when dealing with strangers online. Never share personal information, including Social Insurance Numbers, until you have verified that you are dealing with a legitimate business or organization. Whenever it comes to your money or your personal information, ask a lot of questions and don't be pressured into hasty decisions. If it feels wrong, trust your instincts.

RCMP urge you to arm yourselves and the vulnerable people in your life against scammers by learning how to recognize and protect yourself from fraud: [www.anti-fraudcentre.ca](http://www.anti-fraudcentre.ca).



Re-Play Youth Sports Equipment Swap in Thorsby

**Book Your Table Now to Sell Your  
Outgrown and Extra Gear.  
Tables only \$10**

**August 22nd 5:30 - 8:00 pm  
Arctic Spas Recreation Complex Fieldhouse**

*With one sports season wrapping up and another one just beginning, it's time to outfit your kids for a fraction of the cost. Come early to get the best selection of previously loved sports gear. Kids are welcome to come and try on gear for sizing. Admission is free plus...ALL SHOPPERS ARE ENTERED TO WIN A \$50 SPORT CHEK GIFT CARD!*

**To Register for your table contact Vanessa  
[vpgoodman@yahoo.ca](mailto:vpgoodman@yahoo.ca) or 780.231.9802 (call or text)**

## IN THIS ISSUE

**39/20 Open Golf Tournament**

**LRT Automotive Says Goodbye**

**Summer Concert Series**

**- Pig Roast**

**& Concert in the Park with Sean Gristwood**

**Alberta Health Advisory**

# THE CLASSIFIEDS



## HELP WANTED

**5 Star Propane is looking for FULL TIME DRIVERS** to deliver propane to Central Alberta locations. Minimum Class 3 with Air. First Aid, Safety Tickets preferred, but training will be provided. Rural and oilfield experience with a current drivers abstract.

Fax resume to: 780-789-0054 or drop off resume at the office 1205 Twp 492 (south end of Thorsby) (1-2)

## WANTED

**Looking for farmland to lease** in the areas of Breton, Warburg, Pigeon Lake or Thorsby area.

Call 780-886-1718. (3-4)

**Room to Rent** - Working Professional Woman seeks room to rent on a month to month basis. Cooking arrangements required. In the Breton area. Non smoker / non drinker. Call Lynn.

639.471.1600 (2-2kr)

## FOR SALE

**Premium Firewood** for sale. For details and pricing call James.

780.405.0826 (2-2kr)

**Electric Pride Scooter** for the disabled - 400 lb. capacity, front & rear baskets, custom cover, 2 - 12 volt batteries, on board charger, 10 mph - range 27 miles. Instruction & Maintenance books, adjustable seat & arm rests. In excellent condition, total weight with batteries 345lb.

Gerry 780-980-5446 (4-4)

**Items for Sale** - 5 piece bedroom suite, 3/4" electric drill, 4 winter tires 265/R17 on rims, Energizer generator 1300 watt.

780.848.2557 (1-1)

**Trail Blazer Travel Trailer** - 1 slide out, TV, radio, A/C, 4 new tires + 2 spares, 2 new batteries, excellent condition.

780.848.2557 (1-1)

**J-G Greenhouse** has a variety of vegetables for you. Beets, cabbage, carrots, cucumbers, garlic, onions, potatoes, pumpkins, squash

780.848.2857 (1-1)

**For Sale or Trade - 1974 Volkswagon Super Beetle** to trade for 250cc-350cc Trail Bike.

780.728.5017 (1-3)

## FOR RENT

**4-Plex Unit in Winfield** - 2 bedrooms + 1 small room downstairs, finished basement, incl. 4 major appliances. Small pets ok but no dogs. \$875 + utilities / month, \$875 damage deposit.

Phone Maria 403.606.6977 or 403.249.2708

or Marie 780.932.7177 (2-2kr)

## HOUSES / LAND / BUILDINGS FOR SALE

**Immaculate House for Sale - Mulhurst Bay** not in subdivision. 3 bedroom, 2 bath, newly renovated home on 4+ acres. Mature landscaping, quonset with concrete floor. Minutes from Pigeon Lake & Fire Hall. A must see that

is priced well below the assessed value. \$279,000 MLS E4124810 for pics. Call Ken.780.818.3593 (1-1kr)

## GARAGE SALES

**Multi-Family Yard Sale** - (3 days) Fri. Aug. 17th - Sun. Aug. 19th from 9:30 am - 5:00 pm daily. 1/2 mile west & 1/2 mile north of Alsike Store on Range Road 41A. Collectibles, Western books, movies and tools! Plus much more! (1-1)

## PROFESSIONAL SERVICES

**Qualified Tutor Available** - High School Level Math, Math 31, Language Arts - all levels. \$20.00 / hour (negotiable) Phone Elizabeth 780.848.1015 (1-3)

## BUILDERS / RENOVATIONS / CARPENTRY

**Blackdog Custom Woodcraft!** Journeyman Cabinetmaker with over 16 years experience. Free consultations and free estimates. Custom kitchens, counter top replacements, built in's and furniture all done for you the way you've dreamed of. Please visit our website at [www.blackdogcustomwoodcraft.com](http://www.blackdogcustomwoodcraft.com).

Call and ask for Sean or Shelley at 780-691-2239 or 780-848-2560 (2-2kr)

**Custom Built Epoxy Countertops and Interior Renovations** - are you looking to update your countertops, renovate your home or need home repairs - call Greg Sharman @ 780.898.3866 or visit [www.gregsharman.com](http://www.gregsharman.com) or [www.counter.gregsharman.com](http://www.counter.gregsharman.com) (2-2kr)

## REAL ESTATE

**Dawn Heisler-Re/Max Real Estate** - Your local Realtor for all your Real Estate needs Cell: 780-619-2564 Office: 780-986-2900



*Ethel Horvath*

July 10, 1929-August 22, 2016

MOM.

You left our Life,  
But NOT our HEARTS



LOVE,

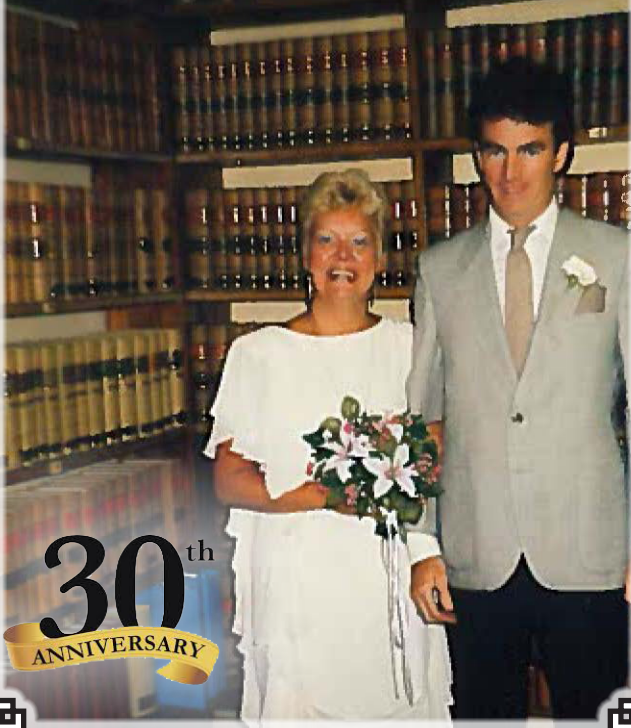
*Your Daughters*

## **Classified Ads are**

**\$5.00** (GST included) for 2 weeks, up to **30 words**

- call 780-887-0077
- drop off your ad at The Village Office
- email [media@community39.com](mailto:media@community39.com)
- submit online at [www.community39.com](http://www.community39.com)

*Thanks for 30 wonderful years!  
Love Lynn*



**Metal fabricator requires full-time  
1st or 2nd Year Welding Apprentice.**  
Agricultural based company, 39 years in business.  
**Competitive wage and benefits  
for the right candidate.**

Fax or email resume to: **Pieter Boogaard, VP Production**  
fax # **780-789-4192**  
info@[sunnybrookwelding.com](mailto:sunnybrookwelding.com)  
[www.sunnybrookwelding.com](http://www.sunnybrookwelding.com)  
phone # **780-789-3855**



**Site Manager – Part-Time  
Thorsby, Alberta**

Leduc Regional Housing Foundation is seeking an enthusiastic Site Manager for a building in the Town of Thorsby. This individual will work an average of 9 hours per week with a flexible schedule and will be responsible for tenant relations/first point of contact, move-ins/outs, building/grounds caretaking, safety and security of the properties. The successful candidate will have previous property management experience, must reside within 50 km of Thorsby, Alberta, and have reliable transportation.

Submit written applications to:

Mrs. Mary Ellen Grueneberg, Housing Services Manager  
**Leduc Regional Housing Foundation**  
5118 – 50 Avenue, Leduc, Alberta  
T9E 6V4

E-Mail: [me Grueneberg@leducregionalhousing.ca](mailto:me Grueneberg@leducregionalhousing.ca)

Posting will remain open until suitable candidate is found.



**Maintenance Worker I – Part-Time  
Warburg, Alberta**

Leduc Regional Housing Foundation is seeking an enthusiastic and motivated individual for a permanent, Part-time Maintenance Worker I position (min 15 hours/week). Reporting to the Asset Manager, the Maintenance Worker I will complete routine building maintenance duties, including minor electrical, plumbing, heating and carpentry and maintains the buildings grounds to a high standard ensuring that quality service is provided to the residents and tenants within the Leduc Region.

**Qualifications:**

1. Experience maintaining grounds.
2. Experience completing minor building repairs.
3. Ability to work independently.
4. W.H.M.I.S. Training.
5. Standard First Aid certificate.
6. A sincere desire and ability to work in the housing industry.

Mr. Stuart Fehr, Asset Manager  
Leduc Regional Housing Foundation  
5118 – 50 Avenue, Leduc, Alberta T9E 6V4  
Fax: 780.986.4881 or

E-mail: [sfehr@leducregionalhousing.ca](mailto:sfehr@leducregionalhousing.ca)

Will Remain Open Until a Suitable Candidate is Found



Located in the Warburg Memorial Arena  
& Thorsby Arctic Spas Recreation Complex

**NOW HIRING**

**We are hiring motivated individuals to  
work evenings and weekends in our fun  
fast paced arena concessions. If this is  
something you are interested in email your  
resume to [tashah2568@gmail.com](mailto:tashah2568@gmail.com).**





[michaelj@mikeshomesltd.com](mailto:michaelj@mikeshomesltd.com)  
[mikep@mikeshomesltd.com](mailto:mikep@mikeshomesltd.com)

**MICHAEL JACOB 780-991-1008**  
**MIKE PETRACEK 780-699-3700**

## Community Events Page

**Custom Built Homes**  
 - Reliable Service – Affordable Pricing  
 – Quality Workmanship

*“You Dream It – We Build It!”*

**Re-Play Youth Sports Equipment Swap in Thorsby** - Book Your Table Now to Sell Your Outgrown and Extra Gear. Tables only \$10. August 22nd 5:30 - 8:00 pm Arctic Spas Recreation Complex Fieldhouse, Admission is free plus...ALL SHOPPERS ARE ENTERED TO WIN A \$50 SPORT CHEK GIFT CARD! To Register for your table contact Vanessa: [vpgoodman@yahoo.ca](mailto:vpgoodman@yahoo.ca) or 780.231.9802 (call or text)

**PANCAKE BREAKFAST @ SANDHOLM HALL** (10 miles south of Thorsby) will be held Sunday, August 26 from 8 AM to Noon EVERYONE WELCOME  
**Royal Canadian Legion Mulhurst Branch #246:** BINGO EVERY TUESDAY AT 7PM. Next Regular meeting Sept. 10 at 7pm.

**Community United Church – summer worship schedule:** Sunday mornings @ 10:30 AM. NO WORSHIP ON LONG WEEKENDS: September 2. Telfordville Services: September 9. Warburg Services: August 19, 26, September 16, 23, 30

**Leduc Legion Crafts & Small Business Market** - Tuesdays from August 7th. 11 am - 2 pm. At the Leduc Legion / Murphy's Public House 5210 - 50th Ave. For more info or to book a table txt Jane @ 780.690.4919 or email [jaype@hotmail.com](mailto:jaype@hotmail.com)

**Treasures Thrift Shop** located in Community United Church, 5112-53 St. Warburg, is open Wednesdays 10 am - 2 pm. Gratefully accepting donations of clean, gently used clothing and small household items on Wednesday and Friday mornings.

**Volunteers with Dogs Wanted** to visit seniors in the Warburg area. Dogs must have a friendly disposition and be well groomed. There will be an interview process. Call Elizabeth for more info! 780.848.1015.

**“Sew Heavenly Quilters”** meet every Thursday at the Warburg Cultural Centre, from 10:00 to 4:00. Everyone welcome to join. Call Peggy Lunde @ 780.789.2545 for more info.

**Buck Lake Farmer's Market** - Saturdays from 10 - 1 p.m. until September 8th. October 6th Harvest Market, November 3 Christmas Market. Buck Lake Hall.

For more information call Suszan (Trudy) Murray at 780.388.2240 or 780.621.3466

**Winfield Public Market** From 11-2 at the arena every Sunday till Aug. See all the details on Facebook at Winfield Public Market. For tables or info call Carla at 780.621.1285

**Ma-me-o Beach Public Market** Sundays 10-3 until Sept 2. For tables or info call Betty at 780.916.1845

**Calmar and District Senior Citizen's Club** monthly meeting will be held the second Wednesday of the month at 1:30 pm.

**Parent Link – Stay 'n Play** held every Thursday from 9:30 am – Noon at the Warburg Village Office. Join us for some play time with your child!

**Breton Golden Age Club** - Cards every Monday at 1 pm, Floor Curling every Tuesday at 1 pm. Last Monday of every month is Potluck at 11:30 am with cards to follow. Meetings are the 1st Wednesday of every month, everyone including new members welcome!

**Genesee Jamboree - Third Friday** of every month from 7 p.m. - 10:30 p.m. Lunch served. \$5.00 / non playing attendants. Everyone welcome. 780.848.2479

**Monthly Jamboree** - Wilton Park Community Ctr. 4th Saturday of every month at 7:30 pm September - April (excl. Dec.) Everyone welcome! 780.985.2478

**Ashland Dam Park** - For reservations call Kelly @ (780) 898-9636.

**Bus Transportation To Leduc** - The 1st and 3rd Thursday of each month. Departs from the Cloverleaf Manor at approx. 9:00 am, cost of \$8, call to reserve a seat: 780-848-7177 (Cloverleaf Manor - Warburg) (Pick-ups in Thorsby and Calmar).

**Warburg Bloomin' Buddies Meetings** - Please contact Linda McLaughlin @ 780 848 2916 for information re meeting dates and times.

**Warburg Legion Hall** is available for rent at \$75.00 for a full day, \$50.00 for 1/2 day, with a deposit of \$50 which is then refundable upon inspection. For Hall rental please contact Tina Tollenaar at 780.848.2469. For events, meetings or information, please call Max at

# LRT Automotive LTD

Final Day of Operation  
August 30th, 2018

We would like to thank everyone  
for their support and patronage  
over the past 42 years.

We've had a lot of laughs and shed a few tears, made new  
friends (and a few enemies) and met some great people.

Our employees were awesome.

Through the years we saw them grow from teenage pranksters  
(car on the roof—that was a good one!)  
to becoming grandparents.

A special thank you to Garry for sticking it out for 36 years.  
It's been a roller coaster ride but we wouldn't change a minute  
of it. And yes, you will still see Rick driving the tow truck.

Thank you again for all the years of memories.

Rick and Jan

**\*\* Watch for updates on Purolator Depot relocation \*\***





**Thorsby Senior's Supper Meetings** These monthly meetings will now be held in the Senior's Centre and are on the last Wednesday of every month at 6:00 p.m. Members are requested to bring a potluck dish. Memberships are available for \$10 from Elaine Warnock at 780.221.3939.

**Thorsby Senior's Birthday Parties** at the Senior's Centre. Held every second Wednesday of the month from 2:30 p.m. - 4:00 p.m. These parties are open to all members and their guests.

**Thorsby & District Fish & Game Regular Meetings** are held on the third Monday of each month @ 7:00 pm at Warburg Village Office Basement (entrance through the back). Please join us. Contact Bruce at 780-848-2242 for more information.

**The Winfield Legion** There will be no potluck social or Monday night cards during the summer months. Our next social will be a Hallowe'en Costume potluck supper and dance, October 25th. Card night to be announced.

**Warburg Museum** - Open every Saturday from 1 pm - 4 pm, excluding holiday weekends. Homemade pie & beverage only \$4.00! New members always welcome and appreciated! Susie 780.848.2507

**Warburg Cultural Centre** - For rentals of facility, wine glasses and/or tablecloths, phone 780.848.2944. Meetings held quarterly. Please contact 780.848.2916 for info.

**Warburg Senior's Centre** rentals. Call Nancy/ Allan Gruninger 780-848-7756. \$75 per rental, \$50.00 damage deposit refundable after inspection - no exceptions!

**Calmar and District Senior Citizen's Club** 4916-50Ave **rental inquiries**, 4 hours \$75.00 more than 4 hours \$150.00 plus equal amounts for damage deposits. Please Call Ed. 780-985-3221

**Calmar and District Senior Citizen's Club** 4916-50 Ave. is hosting **Drop In Coffee** every Monday morning 9am-noon. Great lively conversations, shuffleboard, card and board games. You do not have to be a senior to Drop In for coffee. Everyone Welcome!

**Ashland Dam Park** - For reservations call Kelly or Glenn @ (780) 898-9636.

**Weekly Bingo** at Mulhurst Legion - Every Tuesday, 7:15 pm. Family Bingo! Everyone Welcome! 780-935-6281

**Warburg Pioneer Ag Society & Hall** - hall rental

\$250, phone 780-848-2841 (non-smoking, 350 capacity), Meetings 2nd Wednesday of each month.

**Centreldge Community Centre** - For bookings call Caroline 780-789-3089.

**Morrowdale Community Hall** - For bookings call Elaine at 780-789-2104.

**Mulhurst Legion Hall:** For Hall Bookings call Marie: 780-361-7350

**Telfordville Hall** - For bookings call Tracy at 780-718-9549.

**Strawberry Community Hall** - Call Ollie at 780-789-2180.

**Sunnybrook Hall** - For bookings call Cheryl Krawiec@ 780-789-3193 or 780-920-1950. Sunnybrook Hall Meetings - 1st Tuesday of the month at 7:30 pm. Everyone welcome.

**Genesee Community Hall** - Rentals call Joanne Liba at 780-940-7229.

**Funnell Community Hall** - Christine Burton @ 780-898-6598 for bookings Hall Rent - \$50/day.

**Warburg Alliance Church** Fall Worship Service 11 am. Sunday School 9:45 am. (Summer Worship Service 10:30 am) (No Sunday School for the summer) Bible Studies. Do you need prayer? Please call 780-848-7577

**Calmar Bingo** - Every Wednesday from 7 to 9 pm at the Calmar Legion (4815-47 Street). Wheel Chair Accessible. Concession Available.



**Calmar Pharmacy Ltd. (780) 985-3121**

Box 330, 5002-50 Ave., Calmar AB T0C 0V0

**Proudly Serving**

*the Communities of*

*Calmar · Thorsby  
Warburg*

*and the surrounding areas*

**for over 40 years!**

**Store: 780.985.3142 Pharmacy: 780.985.3121**

*Monday - Friday 9 am - 7 pm Saturday 9 am - 6 pm  
Sundays & Holidays 11 am - 5 pm*



**Friday August 24, 2018**

**Pig Roast begins at 6 p.m., Concert starts at 7p.m.**

## **Warburg Community Park**

**Local Fruit &  
Veggie Vendors**

(Contact the Office if you  
would like to book a table)

**Beer & Coolers  
\$5.00**



**50/50 Draw**

**Remember  
your Lawn  
Chairs**

# **Farm to Table Pig Roast & Concert in the Park** Featuring:

# SEAN GRISTWOOD

**Admission Tickets \$10 at the Warburg Village Office/ \$15 at the Gate**

**Meal Tickets \$10 at the Warburg Village Office/ \$15 at the Gate**

**\*\* (Food Tickets purchased at the gate are based on food availability)\*\***



### **Farmers Market / Vendors Wanted**

**No charge to be a vendor for the night selling fruits, veggies etc.**

**Pay only the cost of admission to the concert.**

**Call Tasha for details 780.848.2841**



## Additional information for posting on Warburg's Website

### Intermunicipal Collaboration Frameworks & Intermunicipal Development Plans Project

#### Project Description

The Alberta Government Regulates the operations of all municipalities through the requirements of the Municipal Government Act (MGA). There have been recent amendments to the MGA which now require all municipalities that share a common boundary to prepare Intermunicipal Collaboration Frameworks (ICFs) and Intermunicipal Development Plans (IDPs).

The purpose of these Plans is to collaboratively plan and support sustainable development and service delivery to residents of Alberta municipalities.

A collaborative initiative is being undertaken by Leduc County and the Towns of Calmar, Thorsby and the Village of Warburg to respond to these new provincial requirements to prepare ICFs and IDPs

An ICF and IDP will be prepared between Leduc County and the Town of Calmar, between Leduc County and the Town of Thorsby and between Leduc County and the Village of Warburg.

The communities of Calmar, Thorsby, Warburg, and Leduc County have retained Stantec Consulting Ltd. to assist with the preparation of these plans.

#### What is an ICF?

An Intermunicipal Collaboration Framework (ICF) is a tool to facilitate cooperation between neighbouring municipalities to ensure municipal services are provided to residents efficiently and cost effectively.

ICFs reinforce existing collaborations and formalizes a process for municipalities to work together.

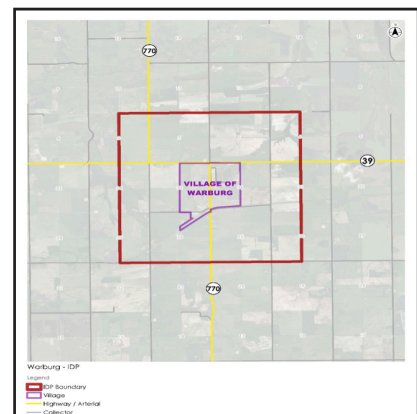
Five specific service areas; transportation, water and wastewater, solid waste, emergency services and recreation must be included in an ICF, plus any other deemed of benefit to the municipalities involved. ICFs must also contain an agreed to dispute resolution process to manage disputes that arise regarding the delivery and cost sharing of services after the ICF has been adopted. All municipalities party to the ICF must also have an Intermunicipal Development Plan (IDP) that is compliant with the new MGA requirements.

#### What is an IDP?

An Intermunicipal Development Plan (IDP) is a collaborative land use planning process for identified lands of mutual interest between two or more municipalities. This specific initiative is to prepare IDPs between Leduc County and the Town of Calmar, between Leduc County and the Town of Thorsby and between Leduc County and the Village of Warburg.

IDPs ensure that desired long-term growth and development looking beyond 20+ years is not compromised by land use and development decisions made today or by future municipal councils. It also provides assurance to residents that live within the Plan area of future development plans. Both municipalities must agree to the policy direction put forward in the IDP and both municipalities must abide by the IDP. The IDP includes a dispute resolution process for disagreements on whether proposed land use and development proposals are consistent with the agreed to policies in the IDP.

**Map showing the IDP boundary between Leduc County and Warburg.**



#### Opportunity for Public Input

Public engagement is important to the development of these plans. Announcements of opportunities for public input will be posted here.



# 39/20 Alliance 2018 Open Golf Tournament Friday, September 7th, 2018 Breton Golf Course



Enjoy a day on the links!

Limited Space Available so register soon to confirm your spot.

Registration Deadline is Friday, August 31, 2018

\$100 / golfer includes golf, cart, meals and prizes

Breton Golf Course; 8:30 a.m. Check-in, 9:00 a.m. Shotgun Start

4 Ball Best Ball Texas Scramble

Putting Contest • Hole In One • Closest to the Pin • Longest Drive

Call the Village of Breton for more information 780.696.3636

Sponsorship Opportunities Available.



Jeff Fritz 780.203.4953  
Chance Martin 403.358.0456  
Corey Lawrence 780.940.6301  
Mack Vars 780.940.2899

Office: 780.789.3915 Fax: 780.789.3929 www.thorsbystockyards.ca

2018



More Sales added throughout the year!!  
Check us out online or call for details!

Are you looking for a part time job once your done haying and harvesting?

Keep us in mind - we are always looking for part time help to start ASAP or later in the fall.

Wages are negotiable depending on experience.

No resumes required just drop us a line

or give us a call

thorsbystockyards@outlook.com  
780.789.3915

\*must be physically fit\*

It's a great atmosphere of staff and owners who are very flexible on hours!

**CUSTOMER APPRECIATION DAY**

*Monday, August 27th, 2018  
Starting at 9:00 a.m.*

*Beef on a bun will be served.*



- Regular Cattle Sale 9AM (May-Aug Sale starts at 10AM)
- Monthly Horse Sale 6PM
- Bred Cow & Heifer Sale 12PM
- Special Feeder Sale 10AM
- No Sale in lieu of Stat Holiday

August 27 - Customer Appreciation Day  
More Sale Dates to be Added Throughout the Year...Check us out online!

September	October	November	December	January
Sun Mon Tue Wed Thu Fri Sat 1 2 3 4 5 6 7 8 9 10 11 12 13 14 15 16 17 18 19 20 21 22 23 24 25 26 27 28 29 30	Sun Mon Tue Wed Thu Fri Sat 1 2 3 4 5 6 7 8 9 10 11 12 13 14 15 16 17 18 19 20 21 22 23 24 25 26 27 28 29 30 31	Sun Mon Tue Wed Thu Fri Sat 1 2 3 4 5 6 7 8 9 10 11 12 13 14 15 16 17 18 19 20 21 22 23 24 25 26 27 28 29 30	Sun Mon Tue Wed Thu Fri Sat 1 2 3 4 5 6 7 8 9 10 11 12 13 14 15 16 17 18 19 20 21 22 23 24 25 26 27 28 29 30 31	Sun Mon Tue Wed Thu Fri Sat 1 2 3 4 5 6 7 8 9 10 11 12 13 14 15 16 17 18 19 20 21 22 23 24 25 26 27 28 29 30 31
<small>⊗ No Sale in lieu of Labor Day</small>	<small>⊗ 12:16 Special Feeder Sale ⊗ No Sale in lieu of Thanksgiving</small>	<small>⊗ 16 Special Feeder Sale ⊗ 24 Bred Cow &amp; Heifer Sale</small>	<small>⊗ 15 Final Sale of 2018 ⊗ 15 Bred Cow &amp; Heifer Sale</small>	<small>⊗ Bred Cow &amp; Heifer Sale</small>

# Alberta Health Services Health Advisory

## Precautionary air quality advisory issued for Alberta

Air quality is expected to be variable across Alberta over the coming days due to wildfire smoke. Alberta Health Services (AHS) is issuing a precautionary air quality advisory for the entire province because of these fires.

Residents of and visitors to Alberta are advised to be aware of air conditions and take precautions against potential health concerns that can be associated with smoky air conditions.

Although minor smoke conditions do not typically cause health concerns in healthy individuals, if smoke conditions become more severe, even healthy individuals may experience temporary irritation of eyes and throat, and possibly shortness of breath.

If you can taste and/or smell smoke in the air:

Monitor your symptoms.

Minimize physical activity outdoors.

Remain indoors with windows, doors and air circulation fans/vents closed.

If you drive to another location, keep windows and vents closed. Run your car fan on re-circulate mode to avoid drawing in outdoor air.

Individuals with respiratory conditions (such as COPD and asthma), and individuals with existing cardiovascular conditions (such as angina, previous heart attack and congestive heart failure), may notice a worsening of symptoms in smoky air conditions. These individuals should monitor for worsening of symptoms and take the precautions routinely recommended by their physicians if a worsening of symptoms occurs.

Individuals experiencing symptoms can also call Health Link 24 hours a day, seven days a week, toll-free at 811, to speak to a registered nurse.

Air quality can and will vary with weather conditions and prevailing winds. Because air quality is expected to be variable, this advisory will remain in effect until further notice. Information about the air quality in many areas of Alberta is updated hourly on the Alberta Environment Air Quality Website: <http://airquality.alberta.ca>.

Alberta Health Services is the provincial health authority responsible for planning and delivering health supports and services for more than 4 million adults and children living in Alberta. Its mission is to provide a patient-focused, quality health system that is accessible and sustainable for all Albertans.



**Dawn Heisler 780-619-2564 (cell)**

780-986-2900 (office) [www.remax-leduc.ca](http://www.remax-leduc.ca)

email: [dawnheisler@remax.net](mailto:dawnheisler@remax.net)



**Real Estate**

Independently Owned and Operated

### CALMAR SHOWHOME READY!



**Saturday, August 18 from Noon - 5 pm**  
**5000 - 52 Avenue Calmar**

No Condo fees! Own your new 3 bedroom, 1 and a half bath with attached garage. Spacious master, open floor plan, well planned kitchen with access to deck and fenced backyard. Great for families and pets, very close to parks and new schools. Starting at \$250,000 E4123494

### THORSBY LOT

60x110' lot backing green space. \$29,900



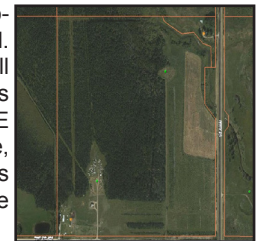
### LAND



92.66 acres mostly cropland with treed draw through South East corner creating great building sight. Quarter mile off hwy 39. E4119626 \$299,000

### BRETON FARM

Private quarter with 3 bedroom mobile. Great location on a no exit road. About 50% treed, remainder with small hay crop, pasture, fences and corrals for horses. Ravine runs through NE corner. Yardsite has heated garage, newer well. Chicken coop includes chickens if you wish! Annual oil lease revenue. E4112901 \$399,000



### LAKEFRONT



6.2 Acres plus share in titled lakefront property! You own 6.2 acres treed property in Mission beach with lake view plus you will be given a share in the .5 acre lakefront property directly in front of you. E4113105 \$299,000

# Royal Care Pharmacy

4902 Hankin Street Thorsby

780-789-3686

# Guardian

Hours of Operation for Both the Store & Pharmacy

Monday to Friday - 9:00 am - 5:00 pm

Saturday - 10:00 am - 4:00 pm Sunday - Closed

TM



THE SERVICE  
**YOU DESERVE**  
FROM THE NEIGHBORS

*you trust.*

**Diabetic Supplies**  
**AADL**  
**Approved Vendor**

*we offer*

- free deliveries
- fax / copy services
- lottery
- full line of herbals / vitamins
- Burt's Bees
- blood pressure monitors
- diapers & formula
- cosmetics
- toys
- home decor & giftware
- apparel & jewelery

*and more!*

Bring in this coupon  
and receive

**\$5.<sup>00</sup> off**

on your purchase  
of \$20 or more!

Regular priced items only.  
Excludes lottery & gift cards.  
Offer valid from August 17 - 26, 2018



## Canada's Conservatives Call on Trudeau Government to Defend Beef Producers

OTTAWA: On August 8th, Jim Eglinski, Member of Parliament for Yellowhead, along with 32 Conservative MPs, wrote to the Finance Minister about the potential impact sanctions or tariffs would have on Canadian beef producers.

"With the escalation of the trade conflict between Canada and the United States, export industries, such as the beef sector, have become increasingly nervous about what the future holds," stated MP Eglinski. "It is important that we stand up for the 60,000 beef farmers across Canada, 18,000 of which are in Alberta.

The co-signed letter requests that the Liberal government consult the beef industry and prepare a package of broad-based tax cuts and industry supports for the agricultural sector in the event of further retaliatory trade measures that could cause significant damage to Canadian beef producers.

The Conservative Caucus has been touring Canada this summer listening to workers, business leaders and labour groups from across the country about the ongoing trade dispute with the United States and its effects on Canadian families. The beef sector employs more than 60,000 people, and is responsible for \$6.8 billion in sales.

"We will continue to listen to Canadians and help protect local jobs in Canada," concluded MP Eglinski.

For more information and to provide feedback about how federal legislators can best address the trade challenges Canada is currently facing, visit: [DefendLocalJobs.ca](http://DefendLocalJobs.ca).

## George L. Saubak Memorial Fund Scholarship

### About the scholarship

Katie Dringenberg, in her last will and testament, bequest to give Leduc County the sum of \$20,000.00 for a scholarship fund for a student who attains his or her high school diploma after attending school in the west end of the county and continues further education in the field of medicine (including nursing, dentistry, pharmacy or veterinary medicine). The scholarship fund is to be known as the **George L. Saubak Memorial Fund**.

### Amount to be awarded

The amount of the scholarship shall be determined by the interest accumulated on the scholarship donated during the preceding year. This amount may vary from year to year depending on the interest rate which the fund had been invested at. Only one award will be made in any one year.

### Eligibility

The deadline for applications is Friday, August 31. For more information on eligibility and how to apply, please visit the Leduc County website, where a full description of the George L. Saubak Memorial Fund Scholarship is listed.

[www.leduc-county.com/scholarships](http://www.leduc-county.com/scholarships)



# HARVEST TRUCK & MACHINERY CONSIGNMENT AUCTION

## Sat, September 1st @ 10:00 AM

Terms: Cash/Approved Cheque/Debit/Visa/Mastercard

GST will apply where applicable

Lunch Available

Directions: From the Buck Creek Service Station on Hwy#22, 1 km East on SH#616 or from Breton on Hwy#20, 24 km West on SH#616



### EARLY CONSIGNMENTS INCLUDE:

**TRACTORS:**\*\* John Deere 4455 FWA Tractor c/w JD 280 Loader/Bucket/Grapple\*\*Case IH 5120 FWA Tractor c/w Loader  
\*\*1999 Massey Ferguson 8260 c/w EzeeOn 2135 Loader  
\*\*Ford 8N Tractor\*\*Approx. 40 Tractors

**HAYING & FEEDING EQUIPMENT:**\*\* Bale King Vortex 3000 Bale Processor c/w Hydraulic Chute - Like New

\*\*New Holland 688 Auto Wrap Round Belt Baler - Very Clean  
\*\*New Holland Fastnet Round Baler  
\*\*John Deere Model 800 14' Swather  
\*\*Versatile 4400 21' Swather - Cab, Gas  
\*\*Versatile 400 Hydrostatic 18' Swather - Cab, Gas  
\*\*Round Balers\*\*Square Balers\*\*Haybines\*\*Discbines  
\*\*Swathers\*\*Rakes\*\*Combines\*\*Brush Mowers

**TILLAGE EQUIPMENT:**\*\*IHC 6200 12' Press Drill  
\*\*John Deere 450 6 Bottom Plow  
\*\*John Deere 3100 4 Bottom Plow c/w Colters  
\*\*Allis Chalmers #23 21' Field Cultivator  
\*\*Case #1200 17' Cultivator c/w Mounted Harrows  
\*\*3 PTH Heavy Duty Backhoe Attachment - Unused  
\*\*80" 3 PTH HD Rotary Tiller c/w Gear Drive - Unused  
\*\*Plows\*\*Discs\*\*Cultivators\*\*Seed Drills\*\*3pth Rototillers

**SKIDSTEER EQUIPMENT:**  
\*\*Stout Brush Grapple 66-9 Skidsteer Quick Attach - Unused  
\*\*Stout Full Back 48" Pallet Forks Skidsteer Quick Attach - Unused  
\*\*Stout Walk Through 48" Pallet Forks Skidsteer Quick Attach - Unused  
\*\*Stout Rock Bucket Grapple HD 72-3 Skidsteer Quick Attach - Unused  
\*\*Stout Add-On Fork Grapple - Unused  
\*\*Cat Pallet Forks Skidsteer Quick Attach  
\*\*2 Sets of 72" Forklift Fork Extensions - Unused  
\*\*4 - 94" Skid Steer Hydraulic Dozer Blades - Unused  
\*\*72" HD Skid Steer Grapple Bucket - Unused  
\*\*72" Skid Steer Sweeper - Unused  
\*\*Skid Steer Hydraulic Trencher - Unused

**BIG TRUCKS:**\*\*1982 Chevrolet 70 Grain Truck  
\*\*1970 IHC 1850 Grain Truck - For Parts\*\*Grain Trucks

**TRAILERS:**\*\*1994 Stoughton 45' T/A Dry Van  
\*\*Stock Trailers\*\*Flat Deck Trailers  
**LIVESTOCK SUPPLIES:**\*\*12' x 30' Skid Mounted Livestock Shed - Unused  
\*\*15 - Dar Tar 10 Bar 24' Self Standing Elk Panels (7' High)  
\*\*Dar Tar 24' Self Standing Elk Panel c/w Overhead 12' Gate (7' High)  
\*\*Dar Tar 24' Self Standing Elk Panel c/w 12' Gate (7' High)  
\*\*Dar Tar 24' Self Standing Elk Panel c/w 4' Walk Through Gate (7' High)  
\*\*50 - 24' Self Standing Corral Panels  
\*\*20 - 12' Livestock Panels - Unused  
\*\*20 - 10' Livestock Panels - Unused

\*\*Morand Maternity Pen  
\*\*4 - 3 Bale B&H Haysaver Bale Feeders  
\*\*4 - 9 1/2' Barrel Troughs  
\*\*6 - 6' Barrel Troughs  
\*\*16 - Misc Corral Panels  
\*\*Blue Cattle Squeeze  
\*\*Mesh Panels - Unused  
\*\*Livestock Tire Feeder  
\*\*Panels & Gates\*\*Loading Chutes\*\*Squeezes\*\*Bale Feeders

**TUBING & RODS:**\*\*100 Joints 2 7/8" Tubing\*\*100 Joints 2 3/8" Tubing  
\*\*100 - 7/8" Sucker Rods\*\*Misc Pipe\*\*Pipe Racks

**BUILDING SUPPLIES:**\*\*Approx. 3,000 sq ft of Tin & Ridge Cap  
\*\*20 Lifts of 2x4 Lumber (7 & 8' Lengths)

**PICKUPS:**\*\*2005 Ford F550XL Truck - 4x4, 6.0 Powerstroke Diesel, Auto, Cab & Chassis (Former Mechanic's Service Truck)  
\*\*2003 Ford F450XL Truck - 4x4, 6.0 Powerstroke Diesel, Auto, Cab & Chassis (Former Mechanic's Service Truck)  
\*\*1983 GMC 1500 Sierra Classic Truck - 2wd, 350 Gas  
\*\*1981 GMC C3500 Truck - 2wd, Dually, 454 Gas, Auto, Recent Tranny

Flush, New Plugs & Wires  
**CARS, VANS & SUVs:**\*\*2010 Jeep Compass - One Owner, 4x4, Auto, A/C, Cruise, Leather, Sunroof, New Front Tires, 21,7400 km  
\*\*2004 Dodge Durango - 4x4, Auto

**SHOP TOOLS & MISC:**\*\*80" Heavy Duty Multi Drawer Tool Cabinet c/w 12 Drawers, 2xLarge Doors, 2xSmall Doors - Unused\*\*Heavy Duty Warehouse Steel Shelving Racks c/w Qty of (6) units, 39' per skid per lot - Unused  
\*\*2 - 10' 20 Drawer HD Metal Work Bench c/w 40" High Hanging Peg Board, Stainless Steel Drawer Panel, Metal Handles - Unused\*\*9 PC Workbench Station Combo Set c/w (2) Lockers, (2) Base Cabinets, (3)Wall Cabinets, (1) Tool Chest, (1) Workbench with Bamboo Table Top - Unused\*\*2 - 10,000 LB Heavy Duty Two Post Auto Lifts - Unused\*\*30 Ton Briggs Stratton Log Splitter - Unused \*\*10 Ton Digital Floor Scale c/w 78" Platform - Unused\*\*2 - HD Tire Changers c/w 110V 60 Hz - Unused\*\*HD Wheel Balancer c/w 110V 60 Hz - Unused\*\*Kohler Power Plate Compactor TMG90 - Unused\*\*14" Kohler Power Concrete Floor Saw TMG-Q300 - Unused\*\*2 - 3 PTH HD Wood Chippers c/w 40-70hp - Unused\*\*2 - 2,000 lbs 12V ATV Electric Winches - Unused  
\*\*10 - 2" x 27' Ratchet Tie Downs - Unused\*\*4 - Submersible Sewage Water Pumps 1-1/4hp - Unused\*\*2 - Powertek DG9250E - 9kw 16hp Gas Generators c/w Electric Start 120/240V - Unused\*\*2 - Powertek IN35001 - 3.5kw Silent Inverter Generators - Unused\*\*2 - Powertek PT50C - 2" 6.5hp Waterpumps - Unused\*\*4 - Powertek PT80C - 3" 6.5hp Waterpumps - Unused  
\*\*2 - Kende CD265-ES 265 Amp Battery Charger/Starters - Unused  
\*\*2 - Loncin MS120 6.5hp Plate Compactors c/w Protective Frame & 220 lb Wheel Kit - Unused\*\*2 - Loncin MS100 6.5hp Plate Compactors c/w Wheels & Water Tank - Unused\*\*2 - Loncin MS20 6.5hp Plate Compactors c/w Wheel Kit - Unused\*\*Loncin MS10 6.5hp Plate Compactor c/w Wheel Kit - Unused\*\*2 - PowerPro DW45 Electric Jack Hammers 31 lb/1700W Motor/33' lb Impact - Unused\*\*4 - LRP CUT40 40 Amp Inverter Plasma Cutters 110V/220V Cuts 1/2" Plate, 60% Duty Cycle - Unused\*\*2 - LRP MMA200 200 Amp Stick & Tig Dual Function Inverter Welders 110V/220V - Unused  
\*\*2 - LRP MIG180C 180 Amp Gas Wire Feed & Stick Welders Dual Function Inverter 220V - Unused\*\*2 - LRP MIG100 100 Amp Wire Feed Welders Dual Function, Flux Core & Stick, Dual Function 110V - Unused\*\*Powertek PT9500 Magnetic Base Drill 120V 15 Amp 6 Speed Forward/Reverse 200-550 RPM 7 1/2" Stroke, 15000 Magnet, Max Hole Saw Size 2 1/8" - Unused  
\*\*4"x300' Poly Layflat Discharge Hose - Unused\*\*2 - 3"x300' Poly Layflat Discharge Hose - Unused\*\*2 - 2"x300' Poly Layflat Discharge Hose - Unused  
\*\*Double Wall Tidy Tank\*\*Remington REM-70T-KFA 70,000 BTU Heater  
\*\*Heat Star HD 75,000 BTU Heater\*\*6 - Plastic Totes in Metal Cages

**RECREATION, LAWN & GARDEN:**\*\*New Holland LS55 Lawnmower  
\*\*Holiday Trailers\*\*Motorhomes\*\*Quads\*\*Snowmobiles\*\*Lawnmowers  
\*\*Rototillers\*\*2 Sets of 20' Heavy Duty Bi-Parting Wrought Iron Driveway Gates - Unused

**BUILDINGS & SHEDS:**\*\*20' x 20' Prefab Expandable Modular House (Layout: 2 Bedrooms + Washroom + Living Room + Kitchen) c/w Approx. 380 sqft, Floors, Toilets, Sinks, Kitchen Cabinets, Doors, Windows - Unused  
\*\*1981 All Fab 12'x44' Office Skidshack - On Propane, Beds, Fridge, Stove, Microwave, Shower, Toilet, Furniture\*\*30' X 70' X 16' Commercial Grade Storage Building c/w Commercial Fabric, Waterproof, UV & Fire Resistant, 13' x 13' Drive Through Door - Unused\*\*40' X 80' X 21' High Ceiling Double Door Storage Building c/w Commercial Fabric, Waterproof, UV & Fire Resistant, 13' x 15' (wxh) Drive Through Doors at 2 Ends - Unused\*\*2 - 20' X 30' X 12' Peak Ceiling Storage Shelters c/w Commercial Fabric, Roll Up Door - Unused\*\*4 - 10' x 10' Commercial Instant Pop Up Tents - Unused\*\*2 - 16' x 22' Marquee Event Tents c/w 320 sq.ft, One Zipper Door, 7 Windows, HD Frames & Fabrics - Unused \*\*20' x 40' Pagoda Party Tent c/w 18 Removable Side Walls c/w PVC Clear Windows, 2 Zipper Doors, HD Frames & PVC Coated Fabrics, Waterproof, Fire & UV Resistant - Unused\*\*2 - 8' X 10' Twin Wall Green Houses - Unused\*\*20' X 30' Twin Wall Green House - Unused  
\*\*11' X 19' Metal Garage Shed - Unused\*\*Sea Cans\*\*White Metal Insulated Garden Sheds (10'x16', 10'x12' & 10'x10')\*\*White Metal Insulated House (8'x8')\*\*Party Tents LIST IS SUBJECT TO ADDITIONS AND/OR DELETIONS

Once your item is in the sale yard, pictures will be taken & updated on our website

Taking Consignments: Aug 13th to Aug 29th  
Monday to Friday from 9 am until 6 pm OR UNTIL FULL

### SALE DAY ORDER

Ring #1	- 10:00 AM	- Miscellaneous Items on Trailers (example: Shop Tools)
Ring #2	- 10:30 AM	- Lumber & Building Supplies
	- Approx. 11:00 AM	- Lawn & Garden
	- Approx. 12 NOON	- Quads, Cars, Trucks, RV's
Ring #3	- 10:30 AM	- Livestock Handling Equipment (ex. Panels, Squeezes, Cattle Shelters)
	- Approx. 12 NOON	- Tractors, Machinery
	- Approx. 5:00 PM	- Tubing & Rods

# TIMBERLIND AUCTIONS

Box 100 Buck Creek, Alberta T0C 0S0  
Ph/Fax (780)542-7323  
Auctioneer: ROBERT LIND License #312993



Visit our website at [www.timberlindauctions.com](http://www.timberlindauctions.com)



TAKE OFF POUNDS SENSIBLY

## TIPS From TOPS! From P. Elson

Our meetings are designed to encourage weight loss, maintenance, to educate and to provide support. New members are welcome to attend a meeting with no obligation. Meetings are held at the Thorsby Fire Hall on Monday mornings with weigh in from 9:00 a.m. - 9:15 a.m. and the meeting following from 9:15 to 9:45 a.m. There is an annual fee to TOPS International of \$44 and a monthly fee to the Thorsby Chapter #1694 of \$5. The first month chapter fees are free. Phone Sherilyn at 780-621-3461.

### Fajita Chicken (Gluten and Dairy Free)

Serves: 4 Servings  
Prep Time: 5 minutes  
Cook Time: 10 minutes

#### Ingredients

- 1 lbs chicken breast
- 1 bell pepper, any color
- 1 medium onion
- 2 cloves of garlic
- 1 tsp. chili powder
- 1 tsp. ground cumin
- 4 tbsp. lime juice
- 1 tbsp. coconut oil

#### Instructions

Cut chicken into strips. Slice pepper and onion. Chop garlic. Combine chicken strips, sliced peppers, onions, chopped garlic, spices and lime juice in a bowl. Stir to mix well until it evenly coats chicken and veggies. Heat coconut oil in a skillet over medium heat. Pour contents of the bowl into the skillet. Cook, stirring occasionally, until chicken is cooked through and

veggies are tender.



# IT'S BEEN A LONG WEEK -ME, IN THE MIDDLE OF TUESDAY

## HAPPENINGS at CLOVERLEAF MANOR

#### CHURCH SERVICES

Each Sunday - 10:30 a.m. - Catholic Communion  
1st Friday - 2:00 p.m. - United Church  
3rd Friday - 10:30 a.m. - Catholic Church  
4th Friday - 2:00 p.m. - Alliance Church

#### HEALTH & WELLNESS

2nd and 4th Mondays of the month - 10:15 a.m. - Exercise with Cassie (FREE- Thanks to a grant from Warburg Recreation Board)  
2nd Thursday of the following months October, December - 9:00 a.m. - Dees Tender Tootsies (foot care)

#### BANDS and ENTERTAINMENT

1st Sunday of the month - 2:00 p.m. - Dwayne Harrish  
1st Saturday of the month - 2:30 p.m. Sunshine Band Singers  
3rd Monday of the month - 7:00 p.m. - Country Friends

#### BUS TRIPS

Shopping, Dr. Appts., etc. 1st & 3rd Thursdays of the month - 9:00 a.m. - Bus to Leduc. Please call 780-848-7717 to sign up if you want to go on any of the bus trips.



Yesterday's  
Treasure



Market

Your Classic Emporium

**Now Open**

Mon-Sat 10 - 6 and Sunday 11 - 3

**780.985.2522**

4904 - 50 Ave Calmar  
yesterdaystreasuremarket.com

**Table Lamp SALE**  
Buy One get One 50% Off  
PLUS in-store discounts!  
on August 18th  
for Calmar Days

**SELF-LOADING BALE TRUCK FOR HIRE**

Call 780-964-9761 for booking and quotes



**HAULS 17 BALES**

Serving West Central Alberta –

Thorsby, Pigeon Lake, Breton, Drayton Valley.

Will travel for larger quantities.

**WEBBLINK  
FENCING**

**Locally Owned & Operated**

*Great prices on new & used  
gates and pipe!*



*Chain Link Fence Specialists For  
Over 17 Years*

**Call For A Free Quote**  
**Phone (587) 990-5440**  
Email: [webblinkfencingalberta@gmail.com](mailto:webblinkfencingalberta@gmail.com)

**WINFIELD**  
Feed & Farm Supply

**ACANA**



**WE CARRY ACANA PET FOODS!**

**OPEN**

Monday - Friday 9 am - 5 pm

Saturday - 9 am - Noon

Closed all Holidays

**780.682.2493**

**Thorsby Bottle DEPOT**  
It's Worth It

**UNDER NEW  
MANAGEMENT**  
Since September 2017

4922 51 Street Thorsby

780-901-4832

780-938-4856

[return.bottles@gmail.com](mailto:return.bottles@gmail.com)

We specialized in commercial bundle pick-up service

No service charge for pick-up service

Honest, Clean, Fast, Friendly and Accurate Service

Help environment by earning \$ from returning bottles

**Pre-sorting & Pre-counting are always welcome**

**We are very proud to provide odor free environment  
and accurate bottle counting-out-loud service**



Contact us for arranging bundle pick-up service.

Summer Hours of Operation (Apr – Oct)

Monday to Saturday - 9:30am to 5:00pm / Sunday, Holiday – Closed

Winter Hours of Operation (Nov – Mar)

Monday to Saturday - 9:30am to 4:00pm / Sunday, Holiday – Closed

# THE WARBURG BUGLE



## Advertising Rates

1/8 Page - \$13.50 + Gst

1/4 Page - \$21.00 + Gst

1/2 Page - \$30.00 + Gst

Full Page - \$50.00 + Gst

## Classified Ads

\$5.00 for 2 weeks, up to 30 words, includes GST.

Drop-Off Point is the Warburg Village Office

The next Warburg Bugle will be published **August 31, 2018.**

**Deadline for The Bugle will be August 29th at Noon.**

Community Events and Articles are FREE

**780-887-0077**

**media@community39.com**

**www.community39.com**

**Community**<sup>39</sup>  
Enterprises

## KANDA ELECTRICAL INSTALLATIONS LTD.

**Kevin Vernerey**  
Master Electrician



**Residential • Commercial  
Farm • Maintenance  
Liability Insurance**

Cell: 780.984.0372  
Email: kevvvern@gmail.com  
• Call for an Estimate •

## Apollo Concrete Ltd.

READY MIX CONCRETE

Commercial - Residential - Agricultural  
**FREE ESTIMATES**

*"Our Business Is Your Foundation"*

todd@apolloconcrete.ca

Ph 780-848-7766 Fax 780-848-7795  
Toll Free 1-866-948-7766



49019 Range Road 22, Sunnybrook, AB

We Repair:

- Truck Transport • Industrial • Heavy Equipment •
- Agriculture • Automotive • School Buses •

780.789.3322 1.855.789.3322

www.nitronut.com

Check out our Facebook page!



## Breton Auto Body

- Autobody Repairs & Refinishing
- Tires - Sales & Service
- AMVIC licensed dealer
- Towing

Phone 696-3757

Hours: 8:00 AM - 4:30 PM

## Breton Denture Centre

5012 - 50 Ave. Breton

780-696-9696

### Our Services Include:

- Free Consultations
- Same Day Relines
- Complete & Partial Dentures
- 1 Hour Denture Repairs
- Dental Assistance for Seniors
- Referral to a Dentist or Surgeon



*Join Us Again in Completing that Beautiful Smile!*

## WILD WEST EXPRES Delivery Ltd.

Pickups / Deliveries / Estimates

**CALL 780-898-2350**

Call before 11AM for same day pickup from Edmonton  
and surrounding areas delivered to your door!

Business or Personal. Starting at \$19.95 for 0-49 lbs

Look us up on facebook @ Wild West Express for more info

Email: wildwestexpressdelivery@gmail.com

Office: (780) 908-3845

## SUMMERS DRILLING LTD.

Water well drilling and service  
Family owned Business Serving Alberta since 1917



Never run out  
of water again!

5 year workmanship  
warranty

3 Convenient  
ways to pay

- Visa
- Mastercard
- We now offer full financing

Stop in at our office 4405 - 50 Street, Stony Plain  
780-963-1282

admin@summersdrilling.com

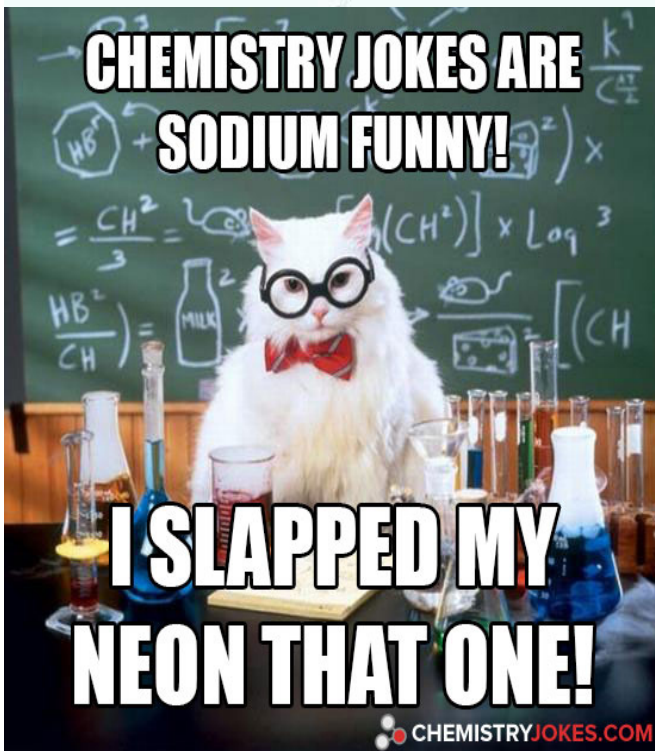
1 800 676 3383



I will always make you smile  
BECAUSE **You Smile.... I Smile**



Two blondes were driving to Disneyland. The sign said: Disneyland Left.. So they started crying and headed home.



Never ask Google for medical advice.

I've gone from mild headache to clinically dead in three clicks.

# Miniely Tower Hughes & Associates

CHARTERED ACCOUNTANTS LLP  
FORWARD THINKING. PLAIN SPEAKING.

5012 - 50 Avenue  
Breton, AB T0C 0P0

Phone: (780) 696-2511  
Fax: (780) 696-2017  
E-Mail: dbanman@miniely.ca

HOURS: Thursdays  
8:30 a.m. to 4:30 p.m. (or by appointment)

## MOBILE - to your door- GLASS SERVICE

# Speedy Glass

780-696-2035

## Hot Dog Cart for Events

If you have a tournament or event and would like to have a mobile food cart there to please your guests then you're in luck! The menu includes hot dogs, chili cheese dogs, smokies, burgers, frozen treats and juice, pop, water. Very reasonable prices. Flexible as to variety of events including selling to the public, sponsored by the host etc. AHS Food Handling Certified and operated out of Leduc so available for events in Leduc, Calmar, Devon, Thorsby and all the surrounding areas.

**HOWARD LAVERS 587.986.7341**





# THE WARBURG BUGLE

## FEATURE OF THE MONTH FREE ADVERTISING

As a special feature each month, in each paper, we are offering a half to full page of free advertising!

The “Feature of the Month” can be a local business, local community group or individual. All you need to do is submit a write up and some pictures! You can talk about the history of your business or group, what you offer the community or how an individual has impacted the community in a positive way.

Submit via email to [media@community39.com](mailto:media@community39.com) or upload on our website with the subject line “Feature of the Month” and which community you are submitting to.

All submissions will receive the free advertising in order of submission date.

**780-887-0077**

**[media@community39.com](mailto:media@community39.com)**

**Community**<sup>39</sup>  
Enterprises





**Dawn Heisler 780-619-2564 (cell)**

780-986-2900 (office) [www.remax-leduc.ca](http://www.remax-leduc.ca)

email: [dawnheisler@remax.net](mailto:dawnheisler@remax.net)



**Real Estate**

Independently Owned and Operated

**BRETON**

1989 upgraded mobile with great floor plan, vaulted ceilings. Vinyl windows, siding, metal roof. Very good condition. Lot fee of \$250 includes water/sewer/garbage. E4111368 \$79,900



**THORSBY**

Beautiful home, renovated kitchen, bathrooms, vinyl windows, hardwood floors, finished basement. Beautiful landscaping, covered deck, gazebo and hot tub! Garage is oversized. E4098322 REDUCED! \$250,000



**ACROSS FROM SCHOOL**

Warburg, with 4 beds and 2 & 1/2 baths. Kitchen has been opened up to dining, living room w/open beam vaulted ceilings, 2 gas fireplaces. Carport E4110584 ~~\$199,000~~ REDUCED \$180,000



**WARBURG VACANT LOTS**

Residential Lot 12 \$24,000  
Lots 23-25 Your choice \$45,000  
Commercial Lots 19 & 20 \$27,000 ea.  
Pie Lot in Crescent - \$35,000  
60' x 125' Lot - \$27,500  
Pie Lot In Cul de sac \$35,000



**WARBURG**

Own the lot, many upgrades, 2 bed, 1 bath, open concept, 2 sheds, apple tree. E4011044 \$99,000



**ACREAGE by TOWN**

Walking distance to Warburg. 2 bed. home moved onto new basement and renovated with almost everything new incl. utilities. Must see! E4109533 \$325,000



**OWNED LOT**

2009 modular, 3 bed, 2 bath, paved driveway E4042452 ~~\$195,000~~ REDUCED \$ 180,000



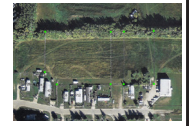
**WARBURG**

Solid 3 bed, 1bath home, newer carpet, shingles, large deck. \$200 monthly lease rate. E4111079 ~~\$32,000~~ REDUCED \$29,900



**3 ACRES IN WARBURG**

Zoned Direct Control. Great for greenhouse or warehouse type business. ~~\$65,000~~ REDUCED \$45,000



**CALMAR LOT**

46x113' mature lot across from Community Centre. Approved for duplex. Zoned R2 E4120815 \$59,900



**WARBURG**

Backing park, addition, deck, garage. E4039942 ~~\$140,000~~ REDUCED \$130,000



**WIZARD LAKE**

LAKEVIEW home on 5 ac. spacious 3 bed, 3 bath built in 2004. 11 ft. ceilings, 2 fireplaces. Main floor laundry. 26x24' dbl heated attach. garage with 220V. Green house. 2 lge chicken coops. 2 storage sheds. Fully fenced and gated. Free access to the lake. E4105181 ~~\$699,900~~ REDUCED! \$675,000



**BRETON**

1 bed. bungalow in a great location. Wood burning fireplace. Upgraded with new shingles, some windows, furnace, flooring, drywall, paint, cabinets, water heater, appliances. 16x14' workshop with power. E4117576 \$110,000



**3 HOMES!**

80 acres with 3 residences! Beautiful main house with so many extras, trout pond, orchard, hot tub, workshop, 36x38' heated garage, cross fenced. E4102636 \$999,988



**SUNDANCE BEACH**

Beautiful lake view w/ lake access! 3 bed., 2.5 bath. vaulted ceiling, in floor heating, dbl. attached garage, barn. E4089158 \$395,000 REDUCED! \$375,000



**WARBURG MHP**

Lot fee only \$200/month! Cheaper to own than to rent this 2 bedroom plus office with porch, newer flooring, shingles. Only \$27,000 E4125035



**THORSBY**

Renovated bungalow, 3+1 bedrooms, 2.5 bath, oversized heated garage, fenced, RV storage. E4119120 \$279,900



**PRIVATE ACREAGE**

1250 sq.ft. bungalow, 3+1 beds plus bonus room, 2.5 baths. Large deck with wheelchair access. double garage E4092050 ~~\$365,000~~ REDUCED \$350,000



**TREED AND PRIVATE**

Beautifully landscaped, trails through the forest, picturesque pond. 21' vaulted ceilings, wood burning fireplace, finished basement, heated double garage, hot tub, fire pit, large deck..must see to appreciate! E4119413 \$550,000



**WARBURG**

Bungalow with finished basement, 24x24 dbl. garage. 3 bed, 2 bath, upgrades - siding, vinyl windows, aluminum shingles, doors, boiler system, sec.sys., appliances and bathroom. E4114690 \$225,000



**BRETON**

Bungalow built in 2002 on 2 lots. Right beside the park in town! E4105640 \$250,000



**BY MISSION BEACH**

9.76 acres treed land ready to build near Pigeon Lake. Nature at it's best with the lake, Provincial Park walking trails, nature conservatory all nearby. Pavement to the property. \$125,000 E4110496



**BRETON**

1150sq.ft bungalow with character, full basement, new shingles, windows, wood burning fireplace, some finishing needed-great investment. E4121234 \$153,900

