

THE WARBURG BUGLE

Warburg Senior High Students View Aviation Careers From the Ground to the Sky!

Students at Warburg School had a fantastic opportunity to see behind-the-scenes at the Edmonton International Airport this Spring. Our Black Gold Regional School District has partnered with Elevate Aviation to give students in the BGRSD a view into a career choice that they may have not considered: working in airport operations such as emergency services, airplane technician, air traffic controller, flight attendant and much more! The students in grades 10-12 visit the Elevate Aviation Learning Centre for 5 days, giving them insight into the very diverse world of airport operations. Thank you to Elevate Aviation and all of the staff at the various departments within the airport area, as well as our Black Gold Regional Schools for giving our students this awesome opportunity.



Warburg Soccer Final Registration Night
April 2nd - 6:30 - 8 p.m.
Village Office basement (rear entry)

**Come enjoy a coffee, chat with us
and register your child(ren)
for this upcoming soccer season!**

**If you are unable to attend, but would like to register,
please contact Courtney at (780)-245-5433
or warburgsoccer2017@hotmail.com.**

The CLASSIFIEDS

WANTED

Looking for Pasture Land to rent. Would like for the 2019 season and beyond if possible.

780.914.3880 (2-2)

FOR SALE

Premium Firewood for sale. For details and pricing call James. 780.405.0826 (2-2kr)

Hay for Sale. - Call 780.940.6731 (1-1)

Farmland and Pasture - To rent in the Thorsby, Warburg or Pigeon Lake areas. 780.964.9761 (1-1kr)

FOR RENT

Lakefront condo Mulhurst Bay - 2 bdrm, 1 bath, laundry. Walk thru open concept. Beautiful views of Pigeon Lake. Fenced yard with fire pit. Avail. April 1. Furnished 1100sf unit \$1300/mo, or unfurnished 1100sf \$1200/mth. Utilities included.

780.919.9830 (1-1)

Thorsby - 1 Bedroom House for rent - Available April 1st. \$550/month rent + utilities, \$550 DD. Big yard & shed. 780.460.8825 or 780.566.8573 (2-2)

4-Plex Unit in Winfield - 2 bedrooms + 1 small room downstairs, finished basement, incl. 4 major appliances. Small pets ok but no dogs. \$825 + utilities / month, \$825 damage deposit.

Phone Maria 403.606.6977 or 403.249.2708

or Marie 780.932.7177 (2-2kr)

CUSTOM FURNITURE BUILDERS

Handcrafted Wood Furniture - Are you looking for furniture that will be durable & attractive? Custom orders available, located in Warburg. Call Ruth at Thomas Wood Furniture 780.621.9768

or visit www.thomaswoodfurniture.ca (2-2kr)

BUILDERS / RENOVATIONS / CARPENTRY

Custom Built Epoxy Countertops and Interior Renovations - are you looking to update your countertops, renovate your home or need home repairs - call Greg Sharman @ 780.898.3866 or visit www.gregsharman.com or www.counter.gregsharman.com (2-2kr)

EXCAVATION / DEMOLITION / CLEARING

Accutrax Cat and Trackhoe, Dozer, Excavator, Compactor, Trenching, Fence line clearing, Demolition, Basements, etc. Ed Neumann 780.789.2547 (4-6)

Classified Ads are

\$5.00 (GST included) for 2 weeks, up to 30 words

- call 780-887-0077
- drop off your ad at The Village Office
- email media@community39.com
- submit online at www.community39.com



Thank You



From The Family of
Emma Ray-Lynn Gillis

We wish to thank all our family and friends for their many acts of kindness, words of comfort, messages of sympathy, flowers, and generous donations.

We also would like to thank, with gratitude and appreciation, all the family and friends who travelled near and far, to Rev. Arun Rodrigues, the Warburg School and a very special thank you to the First Responders.

*Glen, Tammy
and Tanner Gillis*



VILLAGE OF WARBURG Summer Public Works Employment

The Village of Warburg is looking for a motivated post-secondary school student who is looking to gain valuable work experience over the summer.

Commencing in May 1, 2019 to August 30, 2019, (with some flexibility), the following opportunity is available. (Please note we may consider a secondary/high school student for the months of July and August)

The incumbent will be responsible for general labour duties including but not limited to the upkeep of the Village's parks, park facilities and public spaces; inspecting playgrounds, vegetation control, and will require the operation of light equipment.

The incumbent should be able to operate small equipment such as: weed whippers, mowing tractors and other hand-held equipment used in public works operations.

Please note that a valid Driver's License is essential.

This is an exceptional learning opportunity for an individual who is capable of working autonomously and who possesses a keen willingness to learn. If you are a responsible, reliable and motivated individual who is eager to help our community and gain valuable experience along the way-Apply Now!

**DEADLINE for Applications:
4:00 p.m. March 29, 2019.**

Applications will be accepted in person at the Village of Warburg Municipal Office, emailed or mailed to:

Village of Warburg
Attention: Chris Pankewitz
Municipal Administrator
Box 29, Warburg, Alberta, T0C 2T0
Email: village@warburg.ca



Warburg Agencies is hiring!

We are looking for good people
with experience in
Banking and/or Alberta Registries!

Please send resume
and cover letter to:
carol@directlineins.net
or drop off at the office.

Warburg Agencies

5035 – 52 Street, Warburg
Phone: 780.848.2876 Fax: 780.848.2461

POSITION AVAILABLE

Job Summary

The George Spady Centre presently has openings for a Casual Support Workers with our Cloverleaf Program located in Warburg, AB.

The Support Workers will work all shifts as required. Their role will involve ensuring the basic rules are followed and the building is a safe, secure environment. The Support Workers will follow the policies and procedures and will follow the direction of the Program Manager.

This position involves direct client contact in our Cloverleaf Program located in Warburg, AB. The successful candidate will possess a caring non-judgmental attitude, some experience in working with complex life circumstances associated with substance-related disorders, mental health issues, mobility issues and homelessness. Position involves night shift work and some personal care for clients.

Required Education, Skills and Qualifications

The successful candidates will ideally have a degree or diploma in a Human Services field with a minimum of 1 year of direct experience in working in a residential setting. A combination of education and experience will be considered.

Basic understanding of harm reduction principles based on dignity, hope and healing as individuals move forward towards improved health and well-being.

Demonstrates understanding of the addictions field. Knowledge of referrals resources.

Please forward your cover letter and resume to
Mr. John Norton, Program Manager, at JohnN@gspady.ab.ca



michaelj@mikeshomesltd.com

mikep@mikeshomesltd.com

MICHAEL JACOB 780-991-1008
MIKE PETRACEK 780-699-3700

Community Events Page

Custom Built Homes

**- Reliable Service – Affordable Pricing
 – Quality Workmanship**

"You Dream It – We Build It!"

ST. JOHN THE BAPTIST UKRAINIAN CATHOLIC CHURCH, Thorsby - Next mass is Saturday, Mar. 23 at 5:00 p.m. with Father Mark Bayrock. Everyone Welcome! Contact Dan at 780-789-3698 if more information is required.

Royal Canadian Legion Mulhurst #246: Inviting new members: Bingo-Every Tues. 7 pm. NEXT SOCIAL: Friday March 26th @7pm. Next General Meeting: Monday April 8 @ 7pm. Hall Rental: Call John 780-389-3603

Baseball is back! Join us for the 2019 season. Registration due by April 5th, 2019. Forms can be picked up at the Warburg Village Office, the Warburg School and the Breton Elementary School. Coaches and volunteers are needed to make this season a success. Next meeting to take place April 9 at 7:00 p.m. in the basement of the Warburg Village office.

Winfield Public Market: Winfield Hall. Come have a coffee, eat at the concession & visit with our great vendors! Call or text Carla 780-621-1285 for more info. Follow us on Facebook for up to the minute details! Upcoming Markets: April 14th Easter Market 11am-2pm. May 12th Mothers Day Market 11am-2pm. May 26th 11am-2pm.

Musical Instrument Swap Meet and Tailgate Garage Sale - Wilton Park Community Centre, May 11th from 10 a.m. - 4 p.m. Limited tables available (\$10 ea) Reservation deadline is May 1st. Call 780.985.2478 for more info or to book.

Community United Church – Join us for worship, programs, community outreach. Sunday worship at 10:30 AM Telfordville: 2nd Sunday of each month Warburg: remaining Sundays of each month. 780-848-2227.

Treasures Thrift Shop located in Community United Church, 5112-53 St. Warburg, is open every Wednesday from 10 am - 4 pm. Gratefully accepting donations of clean, gently used clothing and small household items on Wednesday and Friday mornings.

Winfield Legion monthly potluck and dance is

last Thursday of the month. Doors open at 5:30 PM. Supper is 6:00 PM. Everyone welcome.

March Madness Sale at the Thorsby Senior's Thrift Store Fill a large bag for \$15 or a small one for \$5! Sale starts March 1st. Regular Hours Thursdays, Fridays & Saturdays 10 am - 3 pm. Donations accepted and appreciated. 4812 - 51 Street Thorsby (south of Esso)

Crib Nights - Run every Wednesday night at Arctic Spas Recreation Complex from 6 - 9 pm. New players are always welcome!

"Sew Heavenly Quilters" meet every Thursday at the Warburg Cultural Centre, from 10:00 to 4:00. Everyone welcome to join. Call Peggy Lunde @ 780.789.2545 for more info.

FUN AND EXERCISE Sandholm Modern Square dance club welcomes NEW MEMBERS, youth, couples and singles. THURSDAYS at 7 p.m. at Sandholm Hall (10 miles south of Thorsby) First night for New Dancers FREE. For more information contact Dave 780-238-5844 or Doris 780 389-2381.

St. Matthew's Lutheran Church - Sunday Worship @10:30 a.m., Holy Communion on the first Sunday of the month; Confirmation and Adult study on Tuesdays; Bible study 1,3,5, sundays of the month. Pastor Ron Flamand, interim pastor. Call 780-789-3873

Parent Link – Stay 'n Play held every Thursday from 9:30 am – Noon at the Warburg Village Office. Join us for some play time with your child!

Genesee Jamboree - Third Friday of every month from 7 p.m. - 10:30 p.m. Lunch served. \$5.00 / non playing attendants. Everyone welcome. 780.848.2479

Monthly Jamboree - Wilton Park Community Ctr. 4th Saturday of every month at 7:30 pm September - April (excl. Dec.) Everyone welcome! 780.985.2478

Ashland Dam Park - For reservations call Kelly @ (780) 898-9636.

Camp Barvnok - For bookings, call Walter 7807172432, or Jason 7809904043, or email bookings@barvnok.com



**NOW HIRING
EXCITING
Career Opportunities
Benefits, Bonus Plans, RRSP Plans
Competitive Wages**

Job Title: Mould Crafter

Starting Compensation: Based on experience

Required Skills:

Ability to work with fibreglass and power tools. Ability to meet deadlines. Able to pay attention to detail and accurate measuring and alignment are key to maintain the cosmetic appeal of the Arctic Spas shells. Shaping moulds, sanding and finishing the surface. Experience with working with roving, fibreglass, and bondo. Experience with mould crafting or auto body work are highly beneficial.

Key responsibilities:

Complete daily, weekly, and monthly mould adjustments at the direction of the quality supervisor. Complete urgent mould repairs during spa mould changes. Maintain mould inserts. Fabricate and build new moulds for new and prototype projects. Maintain a clean workspace, dispose of trash, and recycle.

Physical Demands Required:

This job requires long periods of standing while sanding, forming and grinding. Working on or inside the moulds often requires working from a kneeling position or bent position. Working for long periods with power tools subject to noise and vibration. Flexible schedule to work overtime when required.

PPE:

Safety glasses, hearing protection and half faced respirators are required and provided by Blue falls manufacturing. Steel toed boots are required and your responsibility to have when starting.

Please submit resume in person or via email to:
Blue Falls Manufacturing / Arctic Spas
4549-52st Thorsby Alberta or jwalker@goarctic.com



**NOW HIRING
EXCITING
Career Opportunities
Benefits, Bonus Plans, RRSP Plans
Competitive Wages**

Job Title: Production Team Member

Starting Comensation: Up to \$18.50 hourly

Summary:

Working in the production facility assembling Arctic Spa Hot Tubs.

Required Skills:

Unskilled and Skilled positions available. Experience working with air tools, hand tools would be an asset.

Key responsibilities:

- Reporting daily to the Production Manager and Supervisors to be informed of daily tasks.
- Meet the scheduled build demands as set by daily, weekly, monthly orders.

Physical Demands Required:

Able to be on your feet 8 hours per day. Able to work in a warm environment. Have no issues with adjusting personal schedule to work overtime hours when required.

PPE:

Safety glasses and steel-toe boots required, any further PPE required will be provided.

This is not a complete statement of all duties and responsibilities of this position. The position holder may be required to carry out any other duties as directed by their Manager.

Please submit resume in person or via email to
Jason Walker Human Recourses Manager
at Blue Falls Manufacturing.
4549-52st Thorsby Alberta T0C 2P0 or
jwalker@goarctic.com



Community Events Page

Bus Transportation To Leduc - The 1st and 3rd Thursday of each month. Departs from the Cloverleaf Manor at approx. 9:00 am, cost of \$8, call to reserve a seat: 780-848-7177 (Cloverleaf Manor - Warburg) (Pick-ups in Thorsby and Calmar).

Leduc Public Market runs every Thursday 10-3 in the City Center Mall (Ken's Furniture) 5201 50 Street. Lots of vendors with a wide variety of items. For tables or info call Jenna 780-868-7616.

Warburg Bloomin' Buddies Meetings - Please contact Linda McLaughlin @ 780 848 2916 for information re meeting dates and times.

Warburg Legion Hall is available for rent at \$75.00 for a full day, \$50.00 for 1/2 day, with a deposit of \$50 which is then refundable upon inspection. For Hall rental please contact Tina Tollenaar at 780.848.2469. For events, meetings or information, please call Max at 780 848.2923.

Warburg Museum - New members always welcome and appreciated! Susie 780.848.2507

Warburg Cultural Centre - For rentals of facility, wine glasses and/or tablecloths, phone 780.848.2944. Meetings held quarterly. Please contact 780.848.2916 for info.

Warburg Senior's Centre rentals. Call Nancy/ Allan Gruninger 780-848-7756. \$75 per rental, \$50.00 damage deposit refundable after inspection - no exceptions!

Warburg Pioneer Ag Society & Hall - hall rental \$300, phone 780-848-2841 (non-smoking, 350 capacity), Meetings 2nd Wednesday of each month.

Thorsby Senior's Centre rentals. Call Cathy Kuzio 780-789-2423 / 780-719-7124.

Thorsby Senior's Supper Meetings These monthly meetings will now be held in the Senior's Centre and are on the last Wednesday of every month at 6:00 p.m. Members are requested to bring a potluck dish. Memberships are available for \$10 from Elaine Warnock at 780.221.3939.

Thorsby Senior's Birthday Parties at the Senior's Centre. Held every second Wednesday of the month from 2:30 p.m. - 4:00 p.m. These parties are open to all members and their guests.

Thorsby & District Fish & Game Regular Meetings are held on the third Monday of each month @ 7:00 pm at Warburg Village Office Basement (entrance through the back). Please join us. Contact Bruce at 780-848-2242 for more information.

Breton Golden Age Centre Rentals - \$10 / hour with \$25.00 for use of kitchen or \$15/day. Deposit of \$50 required. Call Pat at 780.696.2056

Breton Crib Tournaments will be held every Saturday at the **Breton Golden Age Centre** - Starting January 5th at 12:30 p.m. except July & August.

Calmar and District Senior Citizens Club Quarterly General Meetings and Birthday Celebrations will be held on the second Tuesday of March, June, September and December at 1:00 PM. A birthday cake will be provided by the club, however if you wish to bring a treat to help celebrate your birthday you are welcome to do so.

Calmar and District Senior Citizens Club 4916 - 50 Ave Calmar hosts Music Jammers on the fourth Tuesday of every month (except July, August and December). Cost is \$7.00 per person, a light lunch is served. (It has been rumoured that this is the best lunch in the county for this event).

Calmar and District Senior Citizens Club 4916 - 50 Ave Calmar: hall rentals, please contact Marg Roskewich 780-985-3221. Rental Rates: 4 hr or less \$100 and more than 4 hrs \$200.00

Weekly Bingo at Mulhurst Legion - Every Tuesday, 7:15 pm. Family Bingo! Everyone Welcome! 780-935-6281

Centrelodge Community Centre - For bookings call Caroline 780-789-3089.

Morrowdale Community Hall - For bookings call Elaine at 780-789-2104.

Mulhurst Legion Hall: For Hall Bookings call Marie: 780-361-7350

Telfordville Hall - For bookings call Tracy at 780-718-9549.

Strawberry Community Hall - Call Ollie at 780-789-2180.

Sunnybrook Hall - For bookings call Cheryl Krawiec@ 780-789-3193 or 780-920-1950. Sunnybrook Hall Meetings - 1st Tuesday of the month at 7:30 pm. Everyone welcome.

Genesee Community Hall - Rentals call Joanne Liba at 780-940-7229.

**Community Events are placed
FREE of charge,
thanks to the community
commitment of**





Wilf Brandt Trucking Ltd. is seeking **Class 3 Tank Truck Drivers**, for Year Round Production Fluid Hauling in the Warburg, Thorsby, Leduc and Drayton Valley areas. Experience with Combo Vac and Steamer truck is an asset.

Current Oilfield Safety Tickets are required and willingness to work shift cycle a must.

Pre-Employment Screening is a pre-requisite to hire.

Please email resume along with a current drivers abstract to resumeswbt@gmail.com



Wilf Brandt Trucking Ltd. is seeking **Class 1 Tank Truck Drivers**, for Year Round Production Fluid Hauling in the Warburg, Thorsby, Leduc, Rimbey and Drayton Valley areas.

Current Oilfield Safety Tickets are a definite asset and willingness to work shift cycle a must. Successful candidates can expect year round work and excellent wages.

Pre-Employment Screening is a pre-requisite to hire.

Please email resume along with a current drivers abstract to resumeswbt@gmail.com



NOTICE OF ANNUAL GENERAL MEETING

The 46th Annual General Meeting of the Buck Mountain Gas Co-op Ltd. will be held at 7:00 p.m. on Wednesday April 3rd, 2019 at the Pioneer Recreation Centre 5339 – 50 Avenue, Warburg, Alberta.

Any member with an interest or desire to sit on the Board of Directors of the Buck Mountain Gas Co-op can call the office for more information at 780-848-2808 or toll free 1-800-265-5389.

NEW THIS YEAR!
GAS CREDIT VOUCHER DOOR PRIZES!

Thorsby & District Fish & Game 51ST ANNUAL TROPHY NIGHT BANQUET Saturday, March 30th, 2019 Warburg Hall Silent Auction & Raffle

Entertainment By: DJ Gary Mastre
Catering: Bob Ronnie Catering



Adults: \$40
Children 7-17: \$20

Cocktails: 5:30 p.m.
Supper: 6:30 p.m.

Reserve Tickets: Bruce - 780.621.2200
Jody - 780.717.6867 Brent - 780.898.5013

Or Pick Up Tickets From:

Thorsby Tire Shop (Thorsby) 780.789.3975
R&T Firearms (Warburg) 780.848.2875
Warburg Agencies (Warburg) 780.848.2876
Hill 'N Dale Insurance (Breton) 780.696.3575

WARBURG CORNER RESTAURANT

780-848-2202

NEW MARCH SPECIALS
ENDS MARCH 31ST.
SUPPER TIME TAKE OUT ONLY

BUY ONE PIZZA GET SECOND ONE 50% OFF

2 DONAIR WITH FRIES ONLY \$ 20.95

2 BAKED LASANGA OR 2 SPAGHETTI
..... ONLY \$29.95

With garlic toast and ceaser salad

CHICKEN WINGS + CEASER SALAD +MOZZA
STICKS ONLY \$29.95

LOOK FOR NEW SPECIALS COMING IN APRIL
WE ALSO HAVE DAILY LUNCH SPECIALS



Warburg School News

Submitted by Warburg School

Warburg School is always buzzing with activity but Spring seems to bring a new level of excitement with programs and field trips.

Our Bamfield Marine Sciences field trip to Vancouver Island will have students and teachers travelling over Spring Break (March 23-31) to view and participate in a world renowned marine research centre program.

Grades 2,4 and 5 toured the Leduc #1 Energy Discovery Centre in March

On March 19th, fifty-seven interested students in grades 8,9,10, from Warburg and Thorsby High Schools, came out with their parents to discuss the possibility of planning a trip to Europe in the Spring of 2021.

Friday, March 22nd, is a Professional Development day for staff and also a day of learning for several high school students as one group visits the Elevate Aviation Learning Centre at Edmonton International Airport and the other group participates in a Leadership Conference in Leduc. Opportunities abound for a variety of learning at Warburg School!

Congratulations to our Archery Team for their effort and excellent sportsmanship at the National Archery in Schools Provincial Tournament at the Expo Centre March 14th.

Our school will be closed for Spring Break from March 22nd through to March 31st. April will see everyone back at school and ready for a busy month. Student Led Conferences will be held on April 16th for K-6 and Parent Teacher Interviews for Grades 7-12. In conjunction with this evening is a Staff Chili Cook Off- so come out, taste and vote for your favourite recipe. Our Scholastic Book Fair runs from March 15 -17th with the Fair open until 7:00 p.m. on the Conference evening. This is where you will find Door Prize draws and guessing games for all,

and books to purchase, of course. All purchases at the Book Fair go toward funding more books for our library. So far this school year our grades 1-8 have read and taken Accelerated Reading quizzes on over five thousand books. We need to keep our voracious readers happy with new book selections, and the Book Fair helps us to do just that!

Our Phys. Ed. classes have been curling and cross country skiing, enjoying the last of the winter season in the best ways possible; staying active and acquiring new skills.

Special mention of congratulations to our students in their extra curricular activities.

We have many students who are currently participating in Hockey Provincial tournaments, Cheer Team competitions, curling bonspiels, Martial Arts tournaments and more! We are cheering for you all!

Have a safe and fun Spring Break!



Above: Grades 4 and 5 students from Warburg School visited the Leduc #1 Discovery Centre in March. They learned all about the Oil and Gas Industry; history and today.

WINFIELD

Feed & Farm Supply

- 780.682.2493 -

HOURS Monday - Friday 9 am - 5 pm Saturday - 9 am - Noon
Closed all Holidays

Check Out Our Facebook Page



BrettYoung™

Forage Seed SALE

March 25th - 30th

10% Off

Brett Young Forage Seed!

**Thursday, March 28th
with Special Guests**

**Brett Young Rep on hand from 10 a.m. - 3:00 p.m.
Meet Klaus of Klaus Custom Farming!**

Cookies & Coffee all week!

All at Winfield Feed & Farm Supply

Monday - Friday 9 a.m. - 5:00 p.m.

and Saturdays 9 a.m. - Noon

BrettYoung™

**KLAUS
CUSTOM
FARMING**

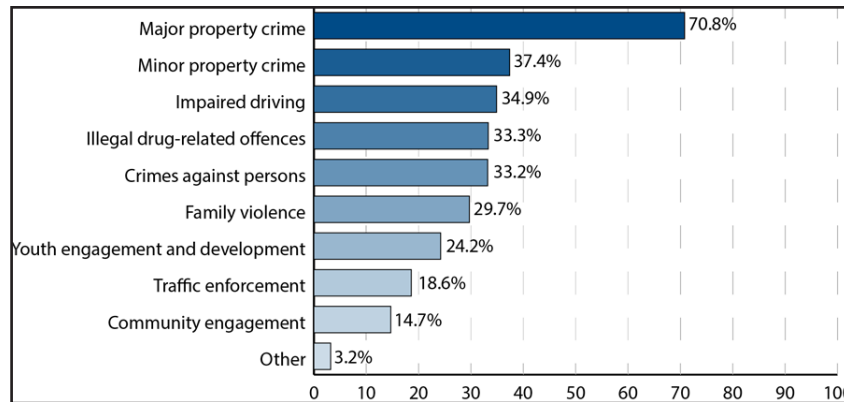
Public input to help set RCMP policing priorities

From Leduc County - RCMP - City of Leduc

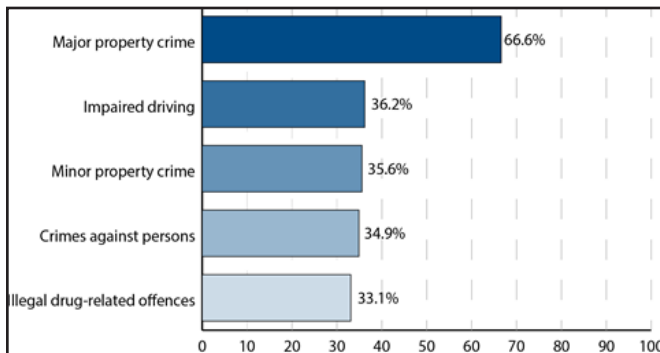
Local RCMP detachments thank the more than 1,700 residents who provided feedback on the 2019 RCMP Policing Priorities survey conducted last month.

RCMP from the Leduc and Thorsby/Breton detachments asked residents in the Leduc region to identify three areas they think should be highest priority for local police. A total of 1,718 individuals in the Leduc County area — including the City of Leduc, towns of Calmar and Thorsby, and Village of Warburg — completed the survey.

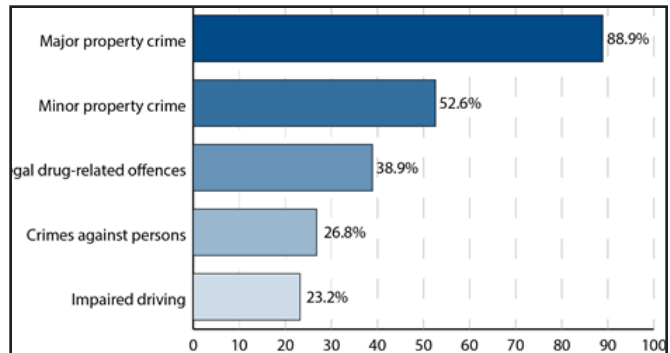
Overall results



Leduc RCMP area results



Thorsby/Breton RCMP area results



More than 70 per cent of respondents identified property crime as a top priority, followed by impaired driving (34.9 per cent), illegal drug-related activity (33.3 per cent) and crimes against persons (33.2 per cent). We appreciate the public's input, and value the feedback that has been shared through this survey. We look forward to continuing the conversation out in the community as we work to build safer communities. Harp Dhaliwal, Thorsby/Breton RCMP detachment commander

This feedback will help local detachments set priorities and ensure that, in addition to responding to calls for service, police focus on the issues most important to the people they serve. With nearly 1,300 survey participants from the Leduc region – including almost 1,000 from the City of Leduc – we're incredibly encouraged with the level of engagement and the feedback citizens have provided to help identify the key priority areas for this region. Dale Kendall, Leduc RCMP inspector and detachment commander

RCMP policing priorities will be established by April 30, 2019.

The City of Leduc and Leduc County have partnered with the RCMP to conduct this brief survey to ensure that policing priorities align with those of the public. The RCMP Policing Priorities survey has been conducted annually in the Leduc region since 2015.

Apollo Concrete Ltd.

READY MIX CONCRETE

Commercial - Residential - Agricultural

FREE ESTIMATES

"Our Business Is Your Foundation"

todd@apolloconcrete.ca

Ph 780-848-7766 Fax 780-848-7795

Toll Free 1-866-948-7766



JL HART ROOFING

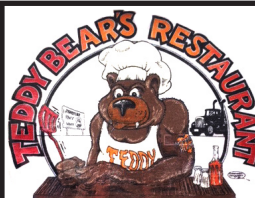
THORSBY, AB
780-240-8327

10 Years Experience

PROFESSIONAL & AFFORDABLE
"WE CARE ABOUT YOUR HOME"

FULLY INSURED

FREE ESTIMATES

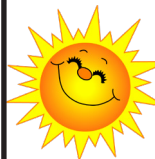


Teddy Bear's

780.696.2489

OPEN 7 - 7 Daily

*Our new
menu is here!*
including PIZZA!



Start the day off right!
Breakfast Served Everyday
7 a.m. - 11 a.m.

≈ CHECK OUT ≈

Our Daily SPECIALS

Served Mon-Fri from 11 - 7
Our specials are not on our regular menu!



Warburg Insurance
Direct-Line



Lynn Lafreniere

Looking for great rates and coverage for
Auto, Home, Commercial & Farm Insurance?

Isn't it time you called us?

780.848.2876

llafreniere@directlineins.net

5035 - 52 Street Warburg

Proudly
Representing



Wawanesa
Insurance

**Complete
Automotive
Service and Repair
On All
Makes and Models**



**NIGHT HAWK
AUTO**

Division of 

SERVICES OFFERED INCLUDE

**Out of Province Inspections | Automotive Repair | Ag Repair
Hydraulic Hose Repairs | Wheel Alignments | A/C Service and Repair
50 Point Inspection with Oil Changes | Diagnostics | Minor Welding Repairs
Part Sales | Fleet Maintenance Programs | Tire Service**

780.789.4159

nighthawkautomotive@gmail.com LOCATED 2 miles south of Thorsby west 1/2 mile to 1248 TWP Rd 490



Check out our Facebook page!

We accept debit / credit cards for payment

Night Hawk Auto's SERVICE TIP OF THE WEEK

Alignment of wheels will affect tire wear as well as your fuel mileage.

THE WARBURG BUGLE



**1/8 PAGE - \$17.50
1/4 PAGE - \$25.00
1/2 PAGE - \$35.00
FULL PAGE - \$55.00**

**- Classifieds - \$5.00 for 2 weeks,
up to 30 words, includes GST.
- Community Events - FREE
- Our Drop-Off Point is
THE VILLAGE OFFICE**

**The Next Deadline For
The Warburg Bugle is April 3rd at Noon.
Call 780-887-0077 or email media@community39.com**

JNK COUNTRY CLEAN

587.987.2764

KRISTY JOHNSTON
Cleaning Specialist

RESIDENTIAL | COMMERCIAL

kristygoodhope@gmail.com
Facebook: JNK's COUNTRY CLEAN

WILD WEST EXPRES

Delivery Ltd.

Pickups / Deliveries / Estimates

CALL 780-898-2350

Call before 11AM for same day pickup from Edmonton
and surrounding areas delivered to your door!

Business or Personal. Starting at \$19.95 for 0-49 lbs

Look us up on facebook @ Wild West Express for more info

Email: wildwestexpressdelivery@gmail.com

Office: (780) 908-3845

WEBBLINK FENCING

OFFERING RURAL CRIME REDUCTION
SECURITY SOLUTIONS



Locally Owned & Operated

Chain Link Fence Specialists For Over 17 Years

Call For A Free Quote

Phone (587) 990-5440

Email: webblinkfencingalberta@gmail.com

KB TACK & FEED LTD

780-898-0689
kbtack@yahoo.com

WE CARRY FEED FOR POULTRY, PIGS, SHEEP, GOATS, CATTLE, HORSES, RABBITS AND PETS

PRODUCTS WE CARRY IN STORE

TACK • SMARTLIC CATTLE TUBS & HORSLIC TUBS • HOFFMANS HORSE PRODUCTS

BROWNS & GROBER MILK REPLACER
CHICKEN, HORSE, CATTLE SUPPLIES
ALFA TEC CUBES AND PELLETS
BLOCK & BAGGED SALT & MINERALS
DEWORMERS FOR CATTLE, HORSES & PETS
TRADITION AGRI DOG AND AGRI CAT FOOD
HEMP OIL PRODUCTS
BUCKETS, TUBS & TROUGHS
CLOTHING & GIFTWARE

ALLFLEX TAGS
ROLLED AND WHOLE GRAINS
LOYALL DOG
BIRD SEED
HEMP BEDDING
SHAVINGS
VACCINES
SHEEP TUBS
ASSORTED VET SUPPLIES

DELIVERY AVAILABLE ON ORDERS OVER \$400 CUSTOM ORDER OPTIONS AVAILABLE UPON REQUEST

"IF WE DON'T HAVE IT IN STOCK, WE WILL TRY OUR BEST TO FIND IT AND BRING IT IN"

LOCATED 3 MILES SOUTH OF BRETON 47301 HWY20

**OPEN MONDAY TO FRIDAY 9AM - 5PM • CLOSED SATURDAYS & SUNDAYS & HOLIDAYS
WILL OPEN SATURDAYS 9 AM-1 PM AS OF MAY 4TH • CHECK US OUT ON FACEBOOK**

HAPPENINGS at CLOVERLEAF MANOR

CHURCH SERVICES

Each Sunday - 10:30 a.m. - Catholic Communion

1st Wednesday - 2:00 p.m. - United Church

3rd Friday - 10:30 a.m. - Catholic Church

4th Friday - 2:00 p.m. - Alliance Church

HEALTH & WELLNESS

2nd and 4th Mondays of the month - 10:15

a.m. - **Exercise with Cassie (FREE- Thanks to a grant from Warburg Recreation Board)**

2nd Thursday of the following months March, May - 9:00 a.m. - **Dees Tender Tootsies** (foot care)

BANDS and ENTERTAINMENT

1st Saturday of the month - 2:30 p.m.

- **Sunshine Band Singers**

3rd Monday of the month - 7:00 p.m.

- **Country Friends**

3rd Tuesday of the month - 1:30 p.m.

Strawberry Jammers

BUS TRIPS:

Shopping, Dr. Apt.'s, etc. 1st & 3rd Thursdays of the month 9:00 a.m. Bus to Leduc

NUTMAN SNACKS

At the Manor- March 25 at 11:00AM to 1:00PM

THE FOLLOWING TRIPS ARE KINDLY SPONSORED BY CAPITAL POWER AND WE WELCOME ANYONE THAT WOULD LIKE TO COME

Lunch and Jam session at Calmar Seniors

March 26, Bus leaves at 11:00, cost is \$15.00

Telus World of Science-Super Power Dogs

March 28, Bus leaves at 10:00, cost is \$20.00

Lunch and Talent Show at Planeview Place

April 5, Bus leaves at 10:00, cost is \$20.00

Soup, Sandwich and Entertainment at Thorsby-

April 10, Bus leaves at 10:45, cost is \$10.00-\$5 for lunch and \$5 for bus.

Dates and Times are subject to change.

Call 780-848-7717 to sign up if you want to go on any of the bus trips.



Library Chatter

From Gail O'Neil

I missed the early March paper, sorry, now there is lots for the readers of this page to catch up with LOL. Staff and Board are excited about the spring programs they want to run.

Yoga at the Library starts Wednesday April 3 at 6:30 pm(this session will end Wednesday June 18) The cost to join this program is "donation only, and drop in", We are getting everything organized and will let people who are interested in joining by putting up notices through Facebook and the Bugle report. Call 780-848-2391 for information or come down to the WPL at 5212 50 ave Yoga Instructor is Stefanie Angus. All levels are welcome.

Board Meetings are the 3rd Wednesday of the Month in the Library upstairs at 6pm, all public is welcome to come as a guest. The next Board meeting is March 20 at 6 pm.

Warburg Library is looking for enthusiastic people to run specific programs, eg: fairy gardens, melted bead suncatchers, reduce/reuse/recycle, we would like to run these programs in April to September. Please call 780-848-2391, email warburglibrary@yrl.ab.ca or on Facebook.

The first day of Spring was March 20! The Library has a shelving cart with indoor and outdoor planting and planning books, these are available to check out and begin dreaming of warmer weather and planting flowers and vegetables!

New Junior Fiction Series: Dragon Masters books 1 thru 12, there is a book 13: Eye of the Earthquake Dragon publishers date: April 30, WPL has this on pre-order!

Miniely Tower Hughes & Associates

CHARTERED ACCOUNTANTS LLP
FORWARD THINKING. PLAIN SPEAKING.

5012 - 50 Avenue
Breton, AB T0C 0P0

Phone: (780) 696-2511
Fax: (780) 696-2017
E-Mail: dbanman@miniely.ca

HOURS: Thursdays
8:30 a.m. to 4:30 p.m. (or by appointment)



49019 Range Road 22, Sunnybrook, AB
We Repair:

- Truck Transport • Industrial • Heavy Equipment •
- Agriculture • Automotive • School Buses •

780.789.3322 1.855.789.3322

www.nitronut.com

Check out our Facebook page!



INSURANCE LTD.

GENERAL INSURANCE

Contact our office for a quote & discuss
which discounts you qualify for.

WAWANESA

Homeowners – Farms – Commercial – Life

All have several discounts available.
- Auto insurance with competitive rates and
several discounts with a good driving record.

ECHELON

Motorcycle, Antique Car & Motorhome Insurance

Now Available Life and Travel Insurance

Authorized Agent for Alberta Registries

Fishing and Hunting Licenses

780-696-3575 - 5023 - 50 Avenue, Breton, Alberta

Hours

Monday to Friday - 9:00 am to 12:00 noon
and 1:00 pm to 4:30 pm



KARAOKE

• Breton Hotel •

Saturday, March 23, 2019

9:00 PM 'til 1:00 AM

Nightly Door Prize Draws for Singers

130,000 songs for you to choose from

Hosted by Kathlene Greenwood & Presented by KanDy Entertainment

kndentertainment@yahoo.com TXT 780-621-7421

NOW HIRING

One Liquor Store Clerk and One Bartender
Appy to bretonhotel@gmail.com or call 780.696.2026



SCREEN TEST IS COMING TO:

Thorsby

Community Centre

Apr 5 & 6

To book a mammogram call
1-800-667-0604
(toll-free)

Screen Test brings
breast cancer
screening to women
in rural areas with
mobile mammogram
clinics

A mammogram can
help find breast
cancer
2 - 3 years before it
can be felt

Women 50-74
should plan to have
a screening
mammogram every
2 years and may
self-refer

There is no cost for
this service

To learn more about
breast, cervical, or
colorectal cancer
screening in
Alberta visit:

**SCREENING
FOR LIFE.CA**

CURRENTLY OPEN Wednesday - Saturday



Online booking: bangzhairshop.salonmonster.com
or call 780.789.0090 | 4914 51 street Thorsby

• Seeking Part Time Licensed Stylist •



Breton Auto Body

- Autobody Repairs & Refinishing
- Tires - Sales & Service
- AMVIC licensed dealer
- Towing

Phone 696-3757
Hours: 8:00 AM - 4:30 PM

KANDA ELECTRICAL INSTALLATIONS LTD.



Kevin Vernerey
Master Electrician

Residential • Commercial
Farm • Maintenance
Liability Insurance

Cell: 780.984.0372
kevin.kanda.electric@gmail.com
• Call for an Estimate •

LONE WOLF MECHANICAL



Heavy Duty Service & Repair
CVIP Inspections

587.643.WOLF (9653)
lonewolfmechanic@hotmail.com
www.lonewolfmechanic.com
4813 - 50 Ave Thorsby

• NOW OFFERING INTERIOR DETAILING •

Income Taxes prepared and Netfiled!

Rates start for as little as \$50 for a basic return.

Reliable, accurate and quick
completion of personal income taxes,
small business taxes, farm taxes and gst returns.
Give Sandy a call to get a quote at 780-915-6108.

Why travel to the City?!
I work in Warburg!

• References Available •



Breton Denture Centre

5012 - 50 Ave. Breton

780-696-9696

Our Services Include:

- Free Consultations
- Same Day Relines
- Complete & Partial Dentures
- 1 Hour Denture Repairs
- Dental Assistance for Seniors
- Referral to a Dentist or Surgeon



Join Us Again in Completing that Beautiful Smile!



Water well drilling and service
Family owned Business Serving Alberta since 1917



Never run out
of water again!

5 year workmanship
warranty

3 Convenient
ways to pay

- Visa
- Mastercard
- We now offer full financing

Stop in at our office 4405 - 50 Street, Stony Plain
780-963-1282
admin@summersdrilling.com

I will always make you smile
BECAUSE **You Smile.... I Smile**



ME WAITING FOR



**THEM TO FIND SOMETHING
ON OAK ISLAND**

**WHAT DO WE LEARN FROM COWS,
HIPPOS AND ELEPHANTS?**



**It's impossible to reduce weight by
eating green grass, salads, and walking.**



"I'm KING OF THE HILL!" Sullee loves his
snow mountain!

Thanks Jen Lewis of Nitro Nut Mechanical!
Have a funny / cute pet pic? Email it to
media@community39.com

**I can't unsee "Captain Tiny Arm" and
his baby sidekick "Mega Hand"**



Unreserved Real Estate Sale for Charlotte Herzog

Sale Conducted Just East of Rimbey at our Sale Site

Property Located in Breton, Alberta

April 12, 2019 - Time: 12:00 Noon

Selling In Conjunction with the 39th Annual Spring Machinery Consignment Sale

Legal Description: NE 21-48-4 W5M Being 144 Acres M/L

Located from Breton, 5.4 Kms (3.3 Miles) North on Hwy #20 to Twr Rd 484, then 3.2 Kms (2 Miles) West. Or From the Alsike Corner 3 Kms South on Hwy #20 to Twr Rd 484, 3.2 Kms West. South Side of the Road.

Selling a Very Good Quarter Section of Land that is All Seeded to Grass. Approx. 80 to 100 Acres of Open Area that has been Hayed in the Past.

The Balance is Treed Shelter Belts & Some Low Land. 4 Wire Prime Fencing & Cross Fencing. Also contains a Large Dugout.

Several Mostly Steel Corrals, a 16'x32' Cattle Shed, 16'x40' Cattle Shed, 12'x60' Cattle Shed w/ 5 Box Stalls for Calving. 2 Water Wells w/ Sub. Pumps & Water Rights for 500 Cattle.

Oil Revenue of Approx. \$3,400 per year payable in May to be determined when the Yard Side is Subdivided. 2 - Power Line Towers on the Very West Side of the Property @ \$1,249.00 Per Power Line Per Year.

Viewing by Appointment,
Contact: Bill - 780-514-0842,
Allen - 403-783-0556 or Kim - 403-704-3141



All measurements are approximate and need to be verified by the purchaser.

Real Estate Transaction is being Handled by Morrison Realty (403) 783-0556

Real Estate Terms & Conditions: 10 % Down on Sale Day. Balance & Possession on or before May 13, 2019. If Balance is NOT RECEIVED by May 13, 2019 the Deposit will be Forfeited as Liquidation Damages.

Sale Conducted by:

License No. 165690

Allen B. Olson Auction Service Ltd.

Rimbey, Alberta

(403) 843-2747 Sale Site

E-mail: abolson@telusplanet.net

Homepage: www.allenolsonauction.com



Dawn Heisler 780-619-2564 (cell)

780-986-2900 (office) www.remax-leduc.ca

email: dawnheisler@remax.net



Real Estate

Independently Owned and Operated

40 ACRE FARM

Renovated home 3 bedroom, 2 bath, 1900sq.ft. 2 fireplaces. Heated shop 220 power, triple carport, hay barn, workshop, polesheds all with metal roofs. livestock waterers. Mixed hay and pasture land cross fenced. E4147534 \$468,000



ACREAGE WARBURG

Walking distance to town 1.5 acres like new renovated home on new ICF basement, 2 bedroom plus partially finished basement, attached garage



WARBURG MOBILE

1995 Modular in Mobile Home Park. Open concept. 3 bed 2 bath. No carpet! 12x16 deck and garden shed. Lot rent \$200/mth with option for a larger yard. New siding, shingles. E4134298 \$65,000



THORSBY

Beautiful home, renovated kitchen, bathrooms, vinyl windows, hardwood floors, finished basement. Beautiful landscaping, covered deck, gazebo and hot tub! Garage is oversized. E4147620 \$250,000



No Condo fees! Own your new 3 bedroom, 1 and a half bath with attached garage. Spacious master with double closets. Main floor boasts open floor plan, well planned kitchen with access to deck and fenced backyard. Great for families and pets with back alley access. Very close to parks and new schools. Calmar is a great community and only 10 minutes from Leduc and airport. Starting at \$240,000 REDUCED \$225,000

WARBURG

2 bedroom, backing park, South facing deck, fireplace, garage. Own for less than rent! E4141963 \$115,000



CLOSE TO DRAYTON VALLEY

55 acres with upgraded home, private trees, pasture, hay field, pole shelter. 4 bedrooms, 2 Bathrooms, finished basement. vaulted ceiling, second kitchen, Oil lease revenue. E4138711 \$349,900



OWNED LOT

2009 modular, 3 bed, 2 bath, paved driveway E4042452 REDUCED \$180,000 \$165,000



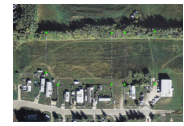
WARBURG

Own the lot, many upgrades, 2 bed, 1 bath, open concept, 2 sheds, apple tree. E4011044 \$99,000



3 ACRES IN WARBURG

Zoned Direct Control. Great for greenhouse or warehouse type business. \$65,000 REDUCED \$45,000



CALMAR LOT

46x113' mature lot across from Community Centre. Approved for duplex. Zoned R2 E4120815 \$59,900



CALMAR LARGE LOTS

Zoned multi-family residential 170x274ft. \$225,000; 74x150ft. \$175,000



THORSBY LOT

REDUCED! 60x110' lot backing green space. \$29,900 \$24,999

WARBURG VACANT LOTS

Residential Lot 12 \$24,000 / Lots 23-25 Your choice \$45,000 Commercial Lots 19 & 20 - \$27,000 ea. Pie Lot in Crescent \$35,000 60' x 125' Lot - \$27,500 Pie Lot In Cul de sac \$35,000



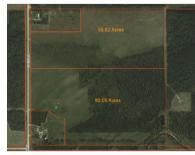
MOBILE IN WARBURG

2007 20' wide modular, 3 bedrooms, 2 bath, vaulted ceilings, covered deck and 2nd sunny deck, gardens, shed, gas BBQ hook up, fenced. Parking for 3. \$200/month lot rent! E4129096 \$119,000



LAND by BRETON

Mixed pasture and treed. Lease revenue. 60 Acres \$160,000 E4135308 80 Acres \$250,000 E4135314 Creek and dugout on SE corner.



BEAUTIFUL AND PRIVATE

NEW! Beautifully landscaped and treed. Home boasts 4 bedrooms, 2.5 baths, vaulted ceilings, wood burning fireplace, loft, heated garage, hot tub...must see to appreciate! E4145695 \$550,000



WARBURG

Well cared for. Wood burning fireplace, parquet wood floors. 2 bed, 2 baths. Main floor laundry. Many upgrades including kitchen cabinets, bathrooms, shingles, siding, some windows, water tank, patio stone sidewalks. Optional lot next door with double garage (additional \$35,000). E4135901 \$110,000



THORSBY

Renovated bungalow, 3+1 bedrooms, 2.5 bath, oversized heated garage, fenced, RV storage. E4119120 \$279,900



PRIVATE ACREAGE

1250 sq.ft. bungalow, 3+1 beds plus bonus room, 2.5 baths. Large deck with wheelchair access. Double garage. E4092050 \$310,000 \$299,000



WARBURG MOBILE

Spacious 20x76 ft. home on a double lot. Open concept, HUGE living room. 3 bed, 2 bath. 14x20' work shed. Enormous 51x12' maintenance free deck. CENTRAL AIR CONDITIONING! Large fenced yard with room for a garage. Lot rent \$280/month. E4140865 \$125,000



ASHLAND DAM ACREAGE

4.15 acres with 3 bedroom, 2 1/2 bath bungalow. Basement has walk out door. Oversized double garage, 30x52' heated shop and more out-buildings. E4142371 \$450,000



Private 1/4 with 3 bed. mobile. Great location -no exit road. About 50% treed, remainder with small hay crop, pasture, fences and corrals for horses. Ravine, yardsite has heated garage, newer well. Chicken coop includes chickens if you wish! Annual oil revenue. E4112901 \$399,000



BRETON FARM

15 ACRES by BRETON

2014 modular, open concept, vaulted ceilings. Great floor plan with bedrooms at opposite ends. 8x32' East facing deck. 30x30 shop. Hay revenue. E4135242 \$299,900 295,000



WARBURG IN CRESCENT

Updated 5 bedroom, 2 bath on quiet large lot. Open floor plan with vaulted ceilings. Finished basement. 23x16' garage, 16x14' storage shed. E4146394 \$210,000

