

THE WARBURG BUGLE



Leduc County Declares Municipal State of Agricultural Disaster

From Leduc County

Leduc County council declared a Local State of Agricultural Disaster at its special council meeting on July 23rd, in response to excessive moisture and weather conditions negatively impacting local producers.

As a council, we recognize the extreme conditions our farmers are facing. The amount of precipitation we received in May alone is more than double the long-term average, and parts of our county have broken a 55-year record for spring precipitation. This has led to more than 220 quarter sections not being seeded and many crops in distress. It's our hope that making this declaration will bring awareness to the issue and encourage other levels of government to provide support where possible. Tanni Doblanko, mayor of Leduc County

From May 1 to July 9, precipitation recorded at four weather stations within Leduc County indicated at least 100 mm more rain than the long-term average for that time period.

Producers are rightfully concerned. Even with crops that are doing well right now, such as hay crops, farmers aren't able to get onto their fields to cut or bale because the ground is too saturated for heavy equipment. If this wet weather continues, many of the crops that are in fair condition will degrade in quality as well. Aaron Van Beers, manager of Agricultural Services

As of July 9, approximately 65 per cent of barley

crops, 50 per cent of canola crops and 35 per cent of wheat crops were estimated to be in poor condition in Leduc County. Poor crop conditions are defined as fields with less than 60 per cent of healthy plants.

An Agricultural State of Disaster can bring awareness to residents, industry, and provincial and federal governments, and facilitate collaboration with impacted groups.

Leduc County last declared a State of Agricultural Disaster in September 2019.

Thorsby RCMP Arrest Youth After Late Night Shooting

From Thorsby RCMP

Warburg, Alta. – On August 2, 2020 a male youth was arrested in connection with a shooting that occurred on August 1 at a residence in Warburg. The RCMP have now laid charges against the youth.

The 17-year-old Accused, who cannot be named, is facing six criminal charges as follows: aggravated assault, unlawful discharge of a firearm, careless use of a firearm, unauthorized possession of a firearm and point a firearm (x2).

Following a judicial interim release hearing, the male has been released from custody on conditions. He is scheduled to appear in Youth Court on August 26, 2020 in Breton Provincial Court.

The RCMP are not looking for any other suspects, and will have no further updates.

CLASSIFIEDS

WANTED

Wanted 12 Volt Starter in working condition for a TEA 20 Ferguson tractor. 780.696.2388 (2-2)

HELP WANTED

Cashier Wanted - Part time cashier (3 8hr shifts + 1 3hr shift per week) or full time (40 hrs/wk). These are evening & weekend shifts only for July & August. Apply in person to Ann at AJ's Trading Post at Highway 778 & 616x. 780.389.3797 (2-2)

Sunnybrook Cafe is looking for experience cooks. Must be able to do shift work; days, evenings and weekends. Please drop off resume at the Cafe. (2-2)

Experienced Handy Person Needed ASAP - To help on acreage 6 km from Breton: Work includes: prep & staining of deck & yard furniture, fence & deck; sawing & piling deadfall; brush cutting; weeding; gravel spreading; tin roofing shed; shed, yard & garage organizing; garage floor sealing, etc. **Also need a painter:** inside walls & exterior door staining ... and **concrete work:** to repair garage floor. Please text if interested. I will return your call. Can provide transportation if needed. 780.909.3155 (2-2)

FOR SALE

Honda Generator - EB5000X, mint showroom condition, hardly used. \$1300 firm, was \$2800 new. Call Robert Parkyn. 780.696.3789 (1-1)

Premium Firewood for sale. For details and pricing call James. 780.405.0826 (1-1kr)

GARAGE SALES

Garage Sale - 33 Sundance Estates, Pigeon Lake. August 7th from 3-7pm August 8 from 9am-5pm & August 9 from 9am-1pm. Lots of misc. items! (1-1)

FOR RENT RESIDENTIAL

4Plex for Rent - 3 bedroom, 1 & 1/2 bathroom, 4 major appliances, finished basement. \$825/mth. Small pets ok! Phone Maria 403.606.6977 or 587.891.6445 (1-1kr)

FOR RENT COMMERCIAL

Building for rent in Breton - \$500/mth plus utilities. Call 780.696.3551 (1-1kr)

BUILDERS/RENOVATIONS

Custom Built Epoxy Countertops and Interior Renovations - are you looking to update your

countertops, renovate your home or need home repairs - call Greg Sharman @ 780.898.3866 or visit www.gregsharman.com or www.counter.gregsharman.com (1-1kr)

REAL ESTATE

Dawn Heisler-Re/Max Real Estate - Your local Realtor for all your Real Estate needs Cell: 780-619-2564 Office: 780-986-2900



Aaron & Brittany Mosicki
are excited to announce
the arrival of their son

Carter Aaron
Michael Mosicki

July 8, 2020
8lbs 6oz

In Loving Memory

Ethel Horvath

July 10, 1929 - August 22, 2016

Death Leaves a Heartache No One Can Heal
Love Leaves a Memory No One Can Steal

Love always, your daughters



We want your feedback!

Solid Waste Strategic Plan SURVEY

Leduc County is completing a solid waste strategic plan to identify service levels and waste management priorities. We want to know what services you currently use, such as our transfer stations, how often you use them and how we can improve our overall solid waste services in Leduc County.

The survey is available online at www.leduc-county.com/waste and will take 10 to 15 minutes to complete.

This survey is confidential and all responses will remain anonymous.

The survey is broken down into the following categories:

- ▶ demographics
- ▶ waste (regular household garbage)
- ▶ recycling
- ▶ agricultural containers
- ▶ household organics
- ▶ transfer stations
- ▶ curbside pickup
- ▶ private haulers
- ▶ waste management priorities
- ▶ Leduc County solid waste communication

Fill out the survey online at www.leduc-county.com/waste. It will be active until Sept. 15, 2020.

If you do not have access to a computer, please call our office at [780-770-9040](tel:780-770-9040) and we will make arrangements to provide you with a paper copy of the survey.





michaelj@mikeshomesltd.com

mikep@mikeshomesltd.com

MICHAEL JACOB 780-991-1008
MIKE PETRACEK 780-699-3700

Community Events Page

Custom Built Homes

**- Reliable Service – Affordable Pricing
 – Quality Workmanship**

"You Dream It – We Build It!"

ROYAL CANADIAN LEGION #246 MULHURST. WEEKLY BINGO'S HELD EVERY TUES. AT 7PM. MEAT BINGO AUGUST 11TH! (PER A.H. GUIDELINES OF COURSE!!) NO SOCIAL THIS MONTH. CALL: 780-935-6281

Warburg Alliance Church is open. 11 a.m. worship service. For more information please phone 780-848-7577, check out our Facebook page or email us warburgalliance@gmail.com.

Treasures Thrift Shop –IS NOW OPEN! (With restrictions) Please see signs at the store for everyone's safety. Wednesdays from 10 am - 4 pm. Donations will only be accepted during store hours, please ensure your donations are clean. 5112 - 53 Street Warburg.

Winfield Public Market: We're back to our Regularly Scheduled Markets!! Social distancing rules will apply. Winfield Hall from 11 am - 2 pm. Call or text Carla 780-621-1285 for more info. Follow us on Facebook for up to the minute details! **Upcoming Markets:** Aug. 8th & 23rd.

Thorsby Bingo has resumed- Bingo is held every Thursday evening at the Senior's Centre. Regular Bingo starts at 7:15 p.m. Early Bird is at 7:00 p.m. Loonie Pots and Progressive Bingos.

WINFIELD LEGION CASH RAFFLE- Tickets \$2.00 Each. Payout Minimum \$1,000 or 50% of Sales whichever is greater to a maximum of \$2,500. Please contact Shelley or Joan @ RCLWINFIELD-236INFORMATION@GMAIL.COM. Due to Pandemic COVID-19 Draw date as per AGLC is extended to November 11th, 2020. Thank You Once Again for Your Support.

Thorsby Senior's Thrift Store is OPEN! Thursdays and Fridays from 10 am - 3 pm. Share our Bounty Sale - Clearance 50% off. Conditions apply.

St. Matthew's Lutheran Church weekly service can be found online at You Tube, search for St. Matthew Thorsby where you can watch a message from Pastor Ron, music and prayers. All activities at the church remain suspended until further notice.

TOPS (Take Off Pounds Sensibly) at Thorsby

Seniors Centre - Mondays, weigh in at 9:00 to 9:15 am, meetings 9:15 - 9:45 am, for more info call Jane 780-789-37891 or Elaine 780-221-3939

Night In Italy - Event postponed until further notice. Raffle Draw new date is July 1, 2020. Tickets are still available. Contact Rhonda at 780.514.5200 or Trent at 780.202.0140

Community United Church – all worship services, meetings and gatherings are suspended until further notice. For updates contact the church office at 780-848-2227.

Warburg Museum - Re-opened Feb. 1st. Open every Saturday (excluding long weekends). Stop in for pie and coffee from 1 - 4 pm.

Does drinking affect your personal life in any way? Have friends or family expressed concerns towards your drinking habits? Have you ever tried to quit drinking, but could not manage to do so? AA can help! 5203 -54th Avenue Thorsby New Life Christian Church (every) Monday 8:00 pm 780-270-7903

Sunnybrook Community Hall Rentals: Contact Name: Mikayla, Phone Number: 306-307-2599, Email Address: sunnybrookcommunityhall@gmail.com

Lindale Hall Jam Sessions are held the **4th Friday** of every month (excl. Dec.) at 7 p.m. Everyone welcome!

Mulhurst Legion #246 Rentals Call: Marie 780-361-7350

CANCELLED - Thorsby Senior's Soup & Sandwich Day at the Senior's Centre is on the second Wednesday of every month. Five dollars will buy you a bowl of soup, a sandwich, a coffee, tea, or juice. Enjoy all this between 11:30-1:30 pm. Birthday Party follows at 1:30 pm. Everyone Welcome!

Winfield Legion is available to rent. Rental Inquiries - Gordon 780-542-1243 or Mona 780-361-9558

"Sew Heavenly Quilters" meet every Thursday at the Warburg Cultural Centre, from 10:00 to 4:00. Everyone welcome to join. Call Peggy Lunde @ 780.789.

HARVEST TRUCK & MACHINERY CONSIGNMENT AUCTION

TIMBERLIND AUCTIONS

Online Timed Auction

Starting: Fri, Sept 4th @ 12:00 NOON

Closing: Wed, Sept 9th @ 6:00 PM

Directions: From the Buck Creek Service Station on Hwy#22, 1 km East on SH#616 or from Breton on Hwy#20, 24 km West on SH#616
Terms: Cash/Approved Cheque/Debit/Visa/Mastercard GST will apply where applicable



SALE INFORMATION

Due to Government Regulations regarding the COVID-19

Timberlind Auctions will be converting our Annual Fall Consignment Auction to an "Online Timed" Auction until COVID-19 crowd restriction policies are lifted. Viewing and inspection of equipment will be allowed for our buyers. We will continue to monitor the situation daily and make public safety our priority.

Thank you for your patience!

DATE & TIME CHANGES AS BELOW

(Please note some dates and times have changed)

Taking Consignments: Aug 10th to Sept 2nd
 from 9 AM until 6 PM

VIEWING: Thursday, Sept 3rd - Wednesday, Sept 9th
 From 9:00 AM until 6:00 PM

" Online Timed Auction"

to Register and View Listing, please go to

www.timberlindauctions.hibid.com

Bidding will Start - FRI, Sept 4th @ 12:00 NOON
 Bidding will Start to Close - WED, Sept 9th @ 6:00 PM*

*Any items that have a bid placed on them in the final moments will have an additional 2 minutes added to the closing.

Please regularly monitor our online site as items for the auction will be added as they are consigned.

If you are not familiar with internet auctions, you can view the items at our yard and leave an absentee bid at the office.

SELLING:

Tractors & Machinery

Tubing & Rods

Livestock Panels & Handling Equipment

Shelters

Lumber & Fencing Supplies

Trucks & Trailers

Holiday Trailers

Motorhomes

Cars & Vans

Lawn & Garden Equipment/Trees

AND MANY MORE ITEMS!



TIMBERLIND AUCTIONS

Box 100 Buck Creek, Alberta T0C 0S0

Ph. (780)542-7323

Auctioneer: ROBERT LIND

License #312993



Visit our website at www.timberlindauctions.com



Community Events Page

2545 for more info.

Parent Link – Stay ‘n Play held every Thursday from 9:30 am – Noon at the Warburg Village Office. Join us for some play time with your child!

Ashland Dam Park - For reservations call Bruce @ (780) 898-9636.

Breton Community Center- To rent the community center please visit our website www.bretonagsociety.com, call 780-696-3561 and leave a message or email us at bretonagsociety@gmail.com

Camp Barvnok - For bookings, call Walter 7807172432, or Jason 7809904043, or email bookings@barvnok.com

Bus Transportation To Leduc - The 1st and 3rd Thursday of each month. Departs from the Cloverleaf Manor at approx. 9:00 am, cost of \$8, call to reserve a seat: 780-848-7177 (Cloverleaf Manor - Warburg) (Pick-ups in Thorsby and Calmar).

Leduc Public Market runs every Thursday 10-3 in the City Center Mall (Ken's Furniture) 5201 50 Street. Lots of vendors with a wide variety of items. For tables or info call Jenna 780-868-7616.

Warburg Bloomin' Buddies Meetings - Please contact Linda McLaughlin @ 780 848 2916 for information re meeting dates and times.

Warburg Legion Hall is available for rent at \$75.00/full day and \$50.00/half day with a deposit of \$50.00 that is refundable upon inspection. For Hall rental, please contact Deb/Max 780 848 2923 or (780) 264 9217 or Nancy/Allan 780 848 7756.

Warburg Cultural Centre - For rentals of facility, wine glasses and/or tablecloths, phone Linda McLaughlin at 780.848.2916. Meetings held quarterly.

Warburg Senior's Centre rentals. Call Nancy/Allan Gruninger 780-848-7756. \$75 per rental, \$50.00 damage deposit refundable after inspection – no exceptions!

Warburg Pioneer Ag Society & Hall— hall rental \$300, phone 780-848-2841 (non-smoking, 350 capacity), Meetings 2nd Wednesday of each month.

Royal Canadian Legion #246 Mulhurst hall rental: Call Marie @ 780-362-7350

Thorsby Senior's Centre rentals. Call Cathy Kuzio 780-789-2423 / 780-719-7124.

Thorsby & District Fish & Game Regular Meetings are held on the third Monday of each month @ 7:00 pm at Warburg Village Office Basement (entrance through the back). Please join us. Contact Bruce at 780-848-2242 for more information.

Breton Golden Age Centre Rentals - \$10 / hour with \$25.00 for use of kitchen or \$15/day. Deposit of \$50 required. Call Pat at 780.696.2056

Breton Crib Tournaments will be held every Saturday at the **Breton Golden Age Centre** - Starting January 5th at 12:30 p.m. except July & August.

Weekly Bingo at Mulhurst Legion - Every Tuesday, 7:15 pm. Family Bingo! Everyone Welcome! 780-935-6281

Centrelodge Community Centre - For bookings call Caroline 780-789-3089.

Morrowdale Community Hall - For bookings call Elaine at 780-789-2104.

Mulhurst Legion Hall: For Hall Bookings call Marie: 780-362-7350

Telfordville Hall - For bookings call Tracy at 780-718-9549.

Strawberry Community Hall - Call Ollie at 780-789-2180.

Genesee Community Hall - Rentals call Joanne Liba at 780-940-7229.

Funnell Community Hall - Christine Burton @ 780-898-6598 for bookings Hall Rent - \$50/day.

Calmar Bingo - Every Wednesday from 7 to 9 pm at the Calmar Legion (4815-47 Street). Wheel Chair Accessible. Concession Available.

Community Bible Church – Alder Flats. Pastor Samuel Hayford 780-388-3926. Sunday Service & Sunday School at 11 am. 780-388-0018 .

Our Lady of Victory Catholic Church Thorsby Mass Every Sunday 9:00 am, Father Arun Rodrigues. For more information call 780-987-2858 or visit www.olvthorsby.wordpress.com.

HERE TO SERVE

Want to stay updated on my work as your Member of Parliament?

Keep in touch via:

@GeraldSorokaMP
 @geraldsoroka
 780-723-6068
 geraldsorokamp.ca

Gerald SOROKA ^{MP}

YELLOWHEAD

GERALD.SOROKA@PARL.GC.CA



British Columbia | Alberta | Saskatchewan

✉ info@clhbid.com ☎ 1 866 263 7480



Warburg Doubletree 2 quarters **For Sale** August 19, 2020

Warburg, AB

Two miles south of **Warburg, AB** and only 1/2 mile east of paved Hwy 770, you find these two **highly fertile** quarters. With the east-west fence being the doubletree, a buyer has the choice of leaving them hooked for life or buying them separately.

The NE quarter is the showcase. Currently, a big hay **producer** because that is what its owner has asked of it. As a hay producer it inevitably steps up and could go head to head with any of the best lands in Alberta. In total, these 157 acres of prime land could be converted to cultivated acres overnight. After years in hay, one can only imagine what this quarter could produce when it comes to grains, oilseeds or pulse crops. It does get better as the quarter comes with passive income by way of **SLR** to help make the payments.

The SE quarter with 160 acres comes with the same horsepower. A good portion of the quarter could be brought under cultivation if a buyer so desired. The quarter is currently in pasture, however, this is the perfect quarter to build on only 30 minutes west of Devon or Leduc. The meandering creek that forms a switchback on the west side gives this quarter unbelievable character. Whether you're a farmer, mixed farmer or rancher, adding this quarter to your barn is sure to pay **huge financial gains** for generations to come.

Visit **CLHbid.com** for more details including Starting Bids!



Website continuously updated with new sales and information!



Library Chatter

From Gail O'Neil

Throughout August the Warburg Public Library will be offering a reading contest for kids from the ages of 5-12, giving them a chance to win prizes! Appointments can be made by visiting the library, patrons can also message us on Facebook (@WarburgPublicLibrary) or Instagram (@warburg.public.library). See our Instagram and Facebook for more contest deals!

We are also offering two more activities during August. Bubbles and Chalk will be on the 18th from 12-4 pm, then we will be making friendship bracelets in the library on the 12th from 12-4 pm.

Warburg Library

Friendship Bracelets

August 12, 12-4pm

All materials are supplied!

BUBBLES AND CHALK

AUGUST 18 In front of the Library
12-4PM

All materials supplied!

Hill 'n' Dale

INSURANCE LTD.

GENERAL INSURANCE
Contact our office for a quote & discuss which discounts you qualify for.

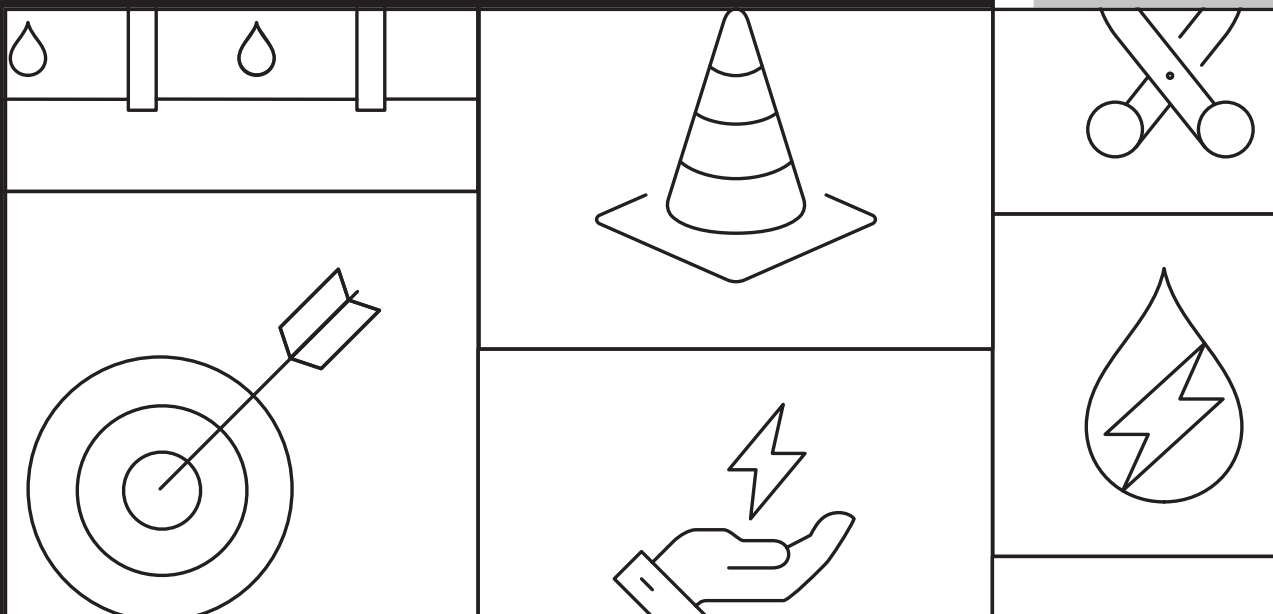
WAWANESA
Homeowners – Farms - Commercial - Life
All have several discounts available.
- Auto insurance with competitive rates and several discounts with a good driving record.

ECHELON
Motorcycle, Antique Car & Motorhome Insurance

Now Available Life and Travel Insurance

Authorized Agent for Alberta Registries
Fishing and Hunting Licenses
780-696-3575 - 5023 - 50 Avenue, Breton, Alberta

Hours
Monday to Friday - 9:00 am to 12:00 noon
and 1:00 pm to 4:30 pm



CREATING JOBS. BUILDING. DIVERSIFYING.

Albertans came together to flatten the curve and save lives. Now we must do the same to save livelihoods and thrive.

Alberta's Recovery Plan is a bold, ambitious long-term strategy that puts Alberta on a path for a generation of growth.

- Creating tens of thousands of jobs now
- Building schools, roads and other infrastructure
- Diversifying our economy and attracting investment with Canada's lowest tax environment

Find out more:

alberta.ca/RecoveryPlan

**ALBERTA'S
RECOVERY
PLAN**

Alberta 

Warburg Village Market

How are you? At Warburg Village Market we are doing our best to help you stay healthy and safe. We are going the extra mile to provide a healthy and safe environment for your grocery shopping experience.

We need as much healthy energy as we can get, and by ensuring our diets are balanced with the proper amounts of protein, fibre and healthy carbohydrates, we can maintain consistent energy and optimize productivity all day long. Get started with these strategies:

Include protein and high-fibre carbs with each meal
- Avoid a sugar rush (and crash) by combining a filling source of protein with healthy, high-fibre carbohydrate sources.

- Great protein sources include lean meats, fish, Greek yogurt, eggs, milk, cheese, beans, lentils, nuts, and seeds.
- Fibre-rich carbohydrates include fruits, veggies, oatmeal, bran, brown rice, beans, peas, lentils, and whole grain breads and crackers.

Add snacks between meals - Keep your energy up with regular snacks that include a good source of protein. Try Greek yogurt with berries, a banana with peanut butter, or raw veggies with hummus.

Avoid added sugars - Added sugars in our food and drinks cause drastic spikes and dips in energy that make fatigue worse – what goes up must come down! Stick to natural sources of sweetness, like fruit, and avoid highly processed items.

Stay hydrated - Dehydration is common and can be a huge drain on energy. Aim for at least 8-10 cups of water per day. Keep a water bottle with you to encourage you to drink throughout the day.

Stick to natural foods - At least 80% of what you eat should be natural, minimally processed foods. Think fruits, veggies, meat, fish, eggs, beans, lentils, nuts, and whole grains.

Shop Warburg Village Market for help with all your healthy eating needs. Stay calm and wash your hands.

WE'RE OPEN FOR YOUR CONVENIENCE
Mon thru Fri 8:30 to 7:00 Sat 9:00 to 6:00
Sunday & Holidays 10:00 am to 5:00 pm

780.848.7704 | office@warburgvillagemarket.ca
5220-50 Ave | Box 532 | Warburg Alberta T0C 2T0



49019 Range Road 22, Sunnybrook, AB

We Repair:

- Truck Transport • Industrial • Heavy Equipment •
- Agriculture • Automotive • School Buses •

780.789.3322 1.855.789.3322

www.nitronut.com

Check out our Facebook page!

Miniely Tower
Hughes & Associates LLP

CHARTERED ACCOUNTANTS
FORWARD THINKING. PLAIN SPEAKING.

5012 - 50 Avenue
Breton, AB T0C 0P0

Phone: (780) 696-2511

Fax: (780) 696-2017

E-Mail: dbanman@miniely.ca

HOURS: Thursdays

8:30 a.m. to 4:30 p.m. (or by appointment)

WEBBLINK FENCING

OFFERING RURAL CRIME REDUCTION
SECURITY SOLUTIONS



Locally Owned & Operated

Chain Link Fence Specialists For Over 17 Years

Call For A Free Quote

Phone (587) 990-5440

Email: webblinkfencingalberta@gmail.com

Joe Bendoritis Transport Ltd.

Grain • Fertilizer • Hay
Equipment & Gravel Hauling
Light towers for sale or rent

R.R. 2 Thorsby, AB T0C 2P0

780.996.1159

Breton Denture Centre

5012 - 50 Ave. Breton

780-696-9696

Our Services Include:

- Free Consultations
- Same Day Relines
- Complete & Partial Dentures
- 1 Hour Denture Repairs
- Dental Assistance for Seniors
- Referral to a Dentist or Surgeon



Join Us Again in Completing that Beautiful Smile!

CLAYTON SWAN, B.A., M.A., J.D.
BARRISTER & SOLICITOR



☎ (+1) (825) 322 2500
☎ (+1) (825) 322 2501
✉ frontdesk@w5law.ca
🌐 www.w5law.ca
📍 5120 51 Ave, Warburg, AB T0C 2T0
📦 Box 400 Warburg, Alberta T0C 2T0

Innovative. Local. Affordable. Available.

General practice law firm located in Warburg
for all your legal needs, including but not limited to:

- Criminal Law
- Corporate Law
- Estate Planning and Administration
- Family Law
- Real Estate
- Notary Public

NOW OPEN!

Call, email or visit
our website
to make an appointment.



Warburg Insurance
Direct-Line

New TEMPORARY Changes Due to COVID-19

ATB: 10:00 AM – 3:30 PM Monday to Friday (For urgent banking needs)
Please call our office for help with other banking

REGISTRIES: 8:30 AM – 3:30 PM Monday to Friday

INSURANCE: Closed for in house office visits. Please call our office at 780.848.2876
and our staff will be happy to help you

Thank-you, Management

5035 - 52 Street Warburg

Proudly
Representing



Wawanesa
Insurance

[intact]
INSURANCE

PEACE HILLS
INSURANCE





Quality and convenience.

Made for Seniors

Over 200 quality frozen meals, soups, and desserts delivered directly to your home.

Average \$7 per Meal. Free Delivery*. No obligation.

Request Your **Free** Menu Today
Ask Us About Our Trial Offer
HeartToHomeMeals.ca

*some conditions may apply.

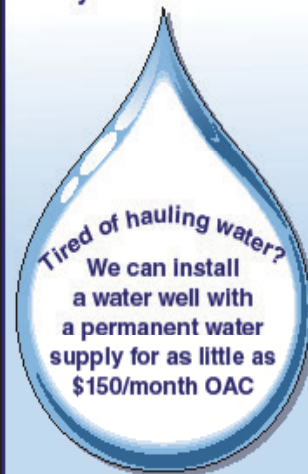
LOCAL: 780-666-2336

We Accept Veterans Affairs Allowances
We Offer Special Diet Options



SUMMERS DRILLING LTD.

Water well drilling and service
Family owned Business Serving Alberta since 1917



Never run out of water again!

5 year workmanship warranty

3 Convenient ways to pay

- Visa
- Mastercard
- We now offer full financing



Stop in at our office 4405 - 50 Street, Stony Plain
780-963-1282
admin@summersdrilling.com

South Edmonton Prosthodontics

780.462.4091

www.southedmontonprosthodontics.com

Dental Implant Reconstruction

Kucey Dental Group

780.468.7270

www.kuceydental.ca

Gentle Dental Care For all Ages

Where the whole family can be seen...

Stabilize Loose Dentures
Restore Natural Function
Replace Missing Teeth

Cleanings, Xrays, Fillings
Cosmetic Dentistry, Invisalign
Emergency Treatment, Extractions

Financing Available



South Edmonton
Prosthodontics
Your Smile. Our Specialty.



valley ridge custom meats

Provincially Inspected



Home of Stinky's Sausage
Meat Cutting, Sausage, Jerky, Patties, Curing

Clarence Kirchner

30 YEARS EXPERIENCE

#473074 - RR 274

We apologize to our customers, please use this number,
effective immediately **780.312.8840**

SITE 10, BOX 9, RR2, THORSBY, AB T0C 2P0

you've tried the rest, now try the BEST



Breton Auto Body

- Autobody Repairs & Parts
- Tires - Sales & Service
- 24 Hour Towing
- Windshields
- AMVIC licensed

Phone 780.696.3757

STRONGBACK SERVICES

*No jobs too big or task too small...
from cleaning eaves trough to complete renovations*

Providing Services in Leduc County

- Lawn and Garden Maintenance
- Home Renovations and Repairs
- Landscaping Services
- Decks and Fences Built and Repaired
- Concrete Pads and Sidewalks
- Licensed and Bonded

**Call Dean Waters For Your
Free Quote
780.554.2551**



Nobody Ever
Drowned in Their
Own Sweat
-Lou Holtz

Insurance Inspections



Light Duty Automotive Repairs



Automotive Diagnostics Domestic & European



Please call to book your vehicle in...

Garry Gellert
Licensed Mechanic
780.920.6572

Kelly Lafreniere
Owner
780.514.9724

Mac Hays Enterprises Ltd



Directions: From Breton - East on Hwy 616 for 3.2 km
then South on Range Rd. 35 for 2.8 km, East side of road

47409 Range Road 35 Breton AB

I will always make you smile
BECAUSE **You Smile.... I Smile**



BEST PHOTOSHOPS EVER...Part II

ORIGINAL: A RESCUED SLOTH



ORIGINAL: A DOG WITH A LEAF ON THE HEAD



Mia new rescue cat wonders what Margret is doing in the house? Thanks for sharing Corinne!!!

Have a funny / cute pet pic?

Email it to media@community39.com

ORIGINAL: SURPRISED LEOPARD



THE WARBURG BUGLE



Advertising Rates

1/8 Page - \$20.00 + Gst

1/4 Page - \$29.00 + Gst

1/2 Page - \$40.00 + Gst

Full Page - \$60.00 + Gst

Classified Ads

\$5.00 for 2 weeks, up to 30 words, includes GST.

Please call in or email your ads.

The next Warburg Bugle will be published **August 21, 2020.**

Deadline for The Bugle will be August 19 at Noon.

Community Events and Articles are FREE

780-887-0077

media@community39.com

www.community39.com

Community³⁹
Enterprises



Dawn Heisler 780-619-2564 (cell)

780-986-2900 (office) www.dawnheisler.remax.ca

email: dawnheisler@remax.net



Real Estate

Independently Owned and Operated

REDUCED!

12.5 ACRES

Quiet road with 2013 manufactured home and 24x32 double garage. 3 bed, 2 bath, air conditioning E4182888 REDUCED \$335,000 \$320,000



CHARACTER HOME

Cozy in Thorsby 1 bedroom with loft, wood burning stove, oversized single garage. Huge lot, fruit trees, fenced. E4175152 \$115,000



LAKEFRONT PROPERTY

6.2 treed acres in Mission beach Pigeon Lake. E4191325 \$299,000



WARBURG

Well cared for. Wood burning fireplace, parquet wood floors. 2 bed, 2 baths. Main floor laundry. Many upgrades including kitchen cabinets, bathrooms, shingles, siding, some windows, water tank, patio stone sidewalks. Optional lot next door with double garage (additional \$35,000). E4135901 \$110,000



WARBURG HUGE YARD

3 bed. 2 bath modular on a large private lot. 2007 with many renovations. AIR CONDITIONING, 2 storage sheds, fenced, large deck. RV parking. Lot lease \$280/month. E4170794 \$104,000 REDUCED \$99,000



REDUCED!

WINFIELD 3 ACRES

Private mature treed. 28x30 oversized dbl garage. 20x12' old log shop, 3 bed, 2 bath 1994 modular, covered deck, wood burning fireplace, added porch entry. New shingles E4167489 \$225,000



OWNED LOT

2009 modular, 3 bed, 2 bath, paved driveway E4042452 REDUCED \$180,000 \$150,000



WARBURG

Own the lot, many upgrades, 2 bed, 1 bath, open concept, 2 sheds, apple tree. E4011044 \$99,000 REDUCED \$95,000



REDUCED!

3 ACRES IN WARBURG

Zoned Direct Control. Great for greenhouse or warehouse type business \$62,000 REDUCED \$30,000



LOT IN CALMAR

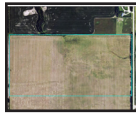
46x113' lot with back alley access across from Rec Complex. \$49,000 E4197436



SOLD

TWO 80 ACRE PARCELS

Cleared land. N half currently in hay. S half hay and pasture, Highway access. Gently sloping to South. \$429,000 each



MITCHELL BEACH OASIS (FD39)

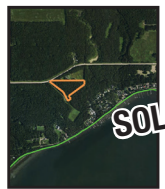
Private, 3 bedroom, 2 bath, fireplace, skylights, covered deck, log, vaulted ceilings, hardwood, storage sheds, fire pit. Just move right in! E4196590 \$279,000 REDUCED \$270,000



REDUCED!

MISSION BEACH 9.76 ACRES

Almost 10 acres for less than a lot around the lake! Treed land. Nature at it's best with the lake, provincial Park walking trails, nature conservatory all nearby. E4192851 \$89,000



SOLD

WARBURG VACANT LOTS

Residential Lot 12 \$24,000 / Lots 23-25 Your choice \$45,000 Commercial Lots 19 & 20 - \$27,000 ea. Pie Lot In Cul de sac \$35,000 REDUCED \$29,900



THORSBY

Perfect for the semi-retired or a growing family with a large country kitchen, enclosed porch, wood burning fireplace. 4+b 3 bath, RV parking, double attached garage. E4162695 \$259,000 REDUCED \$245,000



SOLD

42 ACRES

Mix of trees and open land. Approximately 4 miles from Pigeon Lake. Great for building your dream home or weekend getaway. Lots of wildlife. Zoned Lake Watershed. Oil revenue \$3520/year. E4175719 \$189,000



10 Minutes to LEDUC

13 acres, 2300 sq.ft. 5 bedroom house, attached garage, extensive outbuildings incl. heated, serviced shops, fenced for livestock. E4190098 \$750,000



15 ACRES

2014, 2 bedroom modular, 30x30 shop, cabin, 2 minutes to Breton E4198694 \$305,000



SOLD

LOG HOME WITH 80 ACRES

Beautifully treed and pasture. 1998 has vaulted ceilings, wood burning stove, covered deck, Walkout basement, in floor heat. 40'x40' shop with 8" structural cement floor, 3 phase hoist, two 14'x14' doors, heated. E4162172 REDUCED \$649,000 \$624,900



REDUCED!

WARBURG BEAUTY

2011 bi-level, 4 bedroom, 2 bath, fully finished, hardwood floors, open concept, large lot E4240029 \$260,000



BRETON ACREAGE

6 bedroom, 3 bath large home, wood burning stove, attached garage, hip roof barn, paved driveway, 5.68 acres, fenced E4200555 \$459,000



"For all your real estate needs..."

**Call Dawn
780.619.2564**