

# CONNECT39

Thorsby, Warburg & Area NEWS

previously the Thorsby Target & Warburg Bugle

## LEDUC COUNTY HISTORY

In 1991 "County of Leduc No. 25" under the direction of History Book Committee - Marjorie Bilar, Edward Chubocha, Robert MacDonald and Phyllis Schnick published "**County of Leduc No. 25 History - A Pictorial and Anecdotal Collection**" by Katheryn McNalley. One of my loyal readers found this book at a thrift store and lent it to me so I could share some history with our communities. Thank you to Leduc County for granting me permission to quote excerpts to share with our Leduc County residents.

### County of Leduc No. 25 Facts and Fun

(Statistics based on 1991 data unless otherwise indicated.  
Statistics do not include data from incorporated centres.)

**\*Note: Where I could find it, I have added some current facts I found online for comparison**

- ~ The Municipal District of Leduc No. 489 (changed to No. 75 in 1945) was established on December 6, 1943. The County of Leduc No. 25 was established on September 24, 1963. **\*In 1998 they changed their name to Leduc County**
- ~ County of Leduc population (per 1989 census) was 11,278. **\*Statistics 2021 Population 14,416**
- ~ The total area of the County of Leduc in 1991 in 263,006 hectares (649,879 acres). **\*Statistics 2021 land area is 2,502.59 km<sup>2</sup> (618,403 acres)**
- ~ There are 2,389 kilometres (approximately 1,484 miles) of improved roads in the County of Leduc.
- ~ Taxable parcels of land number 7,684, with 725 tax exempt parcels in the County, for a total of 8,409 properties. **\*Statistics 2021 reported 5,990 total private dwellings (Density: 5.8 persons per square km)**

- ~ The elevation in the County of Leduc ranges from 700 to 900 metres (2,300 to 3,000 feet) above sea level.
- ~ The County of Leduc is home to four golf courses.
- ~ There are 19 churches and 52 cemeteries in the County.
- ~ The County of Leduc School Board administers 14 schools, with an enrollment of 4,300 students. **\*Black Gold School division was formed in 1995 serving Leduc County and 7 municipalities within. They have approximately 12,894 students in 31 schools.**

picture below from page 124 "County of Leduc History"



Smiling faces, Warburg Elementary School.

- ~ In 1986, there were 301,500 hectares (745,000 acres) of land in farms in the County.
- ~ The average size of a County of Leduc farm in 1986 was 150 hectares (372 acres), an increase over the 1981 figure of 146 hectares (360 acres).

**More on Leduc County inside this issue....**

## BULK WATER STATION COMING TO THORSBY! MEDIA RELEASE INSIDE THIS ISSUE!

# Classifieds

## GARAGE SALES

**GARAGE SALE at 36 Village Green in Warburg,** Friday, July 19 - 12-5 pm, Saturday, July 20 & Sunday July 21 - 10 am -5 pm. Electric bed & chair, collectables, tools, yard equipment, dishes etc.

## FOR SALE

Breton West Herefords has both **HORNED AND POLLED BULLS FOR SALE.** Call or text Leonard at 780-898-9590

**2001 OKANAGAN ULTRA LITE - \$6,500 OBO.** Upgraded 22 foot 5th wheel trailer with attachment for short or standard box trucks. Sleeps 5-6. Great condition. 5 tires in excellent condition. Contact 780-991-1795

## WANTED

### WANTED CONCRETE RUBBLE

Contact Alex 780-905-9200 or 780-789-3843

### OLD FARM TRACTORS OR CATERPILLARS

Will buy Complete or Incomplete. 403-396-8629

**LOOKING FOR PASTURE** for cow/calf pairs. Also looking for hay land and grain land.

Contact Levi at 780-312-9891

**LEAD BATTERIES & SCRAP VEHICLES** Will buy your old lead batteries for recycling. Also FREE removal of scrap vehicles. We pay cash for both! 403-396-8629

**WESKAY CATTLE CO. IS CURRENTLY SEEKING PASTURE, HAY OR CROP LAND** to lease for the 2024 season and on, competitive prices, on time lease payments. Call Wesley 780-982-1093

## SERVICES

**LOCAL MEDIATION FOR SEPARATION & DIVORCE -** Are you considering a separation or divorce? Get a personalized agreement for 80% less than court processes. Mike 780-515-0922.

[familymediationcentreofcanada.ca](http://familymediationcentreofcanada.ca)

### D5 DOZER FOR HIRE

Contact Alex 780-905-9200 or 780-789-3843

**INTERIOR DESIGN, CABINETS, COUNTERTOPS & BLINDS.** Independent Design Consultant for over 25 years. Keri at [designbywaters@live.ca](mailto:designbywaters@live.ca) or 780-289-2551. Also on Facebook and Instagram!

**RELIABLE DJ** for your party or special event. We offer Karaoke, Music Bingo, Minute to Win It games and have local references. 587-991-4977 or [www.carrielevins.com](http://www.carrielevins.com)

**JOURNEYMAN PLUMBER/GASFITTER & CERTIFIED SEWER INSTALLER** Repairs, replacement & new installs. Hot water tanks, furnaces, boilers, gas lines, sewer tanks/fields/pumps. Ryan 780-514-9246

**Classified Ads are \$7.50 for 2 weeks**

(max. 4 lines or approx. 30 words) GST included



We are a family-owned business with over 35 years of experience in the industry.

[leducinsurance.com](http://leducinsurance.com)

FARM INSURANCE IS OUR SPECIALTY. WE WILL VISIT YOU FOR A FREE, NO-OBLIGATION QUOTE.

780-986-8424

### Our Markets



### COMMON BASIC COVERAGES:

General Liability  
Dwellings  
Machinery  
Personal Property  
Structures/Buildings  
Hobby Farms  
Livestock  
Poultry  
Dairy Farms

### COMMON OPTIONAL COVERAGES:

Loss of Use on Farm Machinery  
Loss of Income Protection  
Power Interruption  
Increased Fire Department Charges



## Banman Westerlund LLP

Chartered Professional Accountants

- Derek W. Banman CPA, CA - Partner
- Kyle Westerlund CPA, CA - Partner

Box 367, 5012 - 50 Avenue

Breton, AB T0C 0P0

E: [dbanman@banwest.ca](mailto:dbanman@banwest.ca)

#401, 9426 - 51 Avenue NW

Edmonton, Alberta T6E 5A6

T: 780.696-2511

F: 780.696.2017

T: 780.426.3943

F: 780.424.1875

## "little papers...BIG RESULTS"

5	2	7	6	4	8	9	3	1
1	3	6	2	9	7	8	4	5
4	8	9	1	3	5	2	6	7
7	5	4	8	6	9	3	1	2
8	9	1	3	5	2	4	7	6
3	6	2	7	1	4	5	9	8
9	4	8	5	7	1	6	2	3
2	1	3	4	8	6	7	5	9
6	7	5	9	2	3	1	8	4

Sudoku Answers  
from July 12 Issue

The object of the puzzle is to fill the remaining squares, using all the numbers 1-9 exactly once in each row, column, and the nine 3 x 3 subgrids.



# NOW HIRING

Permanent Position available  
for 35 - 40 hours a week.

Shop open Monday to Friday  
8:30am - 4:30pm.

## DUTIES

- › Production of decals, signs, banners, t-shirts
- › Moving, lifting and cutting of signs & substrates
- › Operate printers, cutters and other equipment
  - › Basic graphic design
  - › Customer Service
- › Deliveries to Edmonton and surrounding areas
  - › Decal & sign installations
  - › Other duties as required

## QUALIFICATIONS

- › Attention to detail is a MUST
  - › Must be self motivated
  - › Must be willing to learn
- › Experience with Corel Draw an Asset
- › Must have valid Class 5 Drivers License

## HOW TO APPLY

Please email your resume to Shane at  
[info@cemedia.ca](mailto:info@cemedia.ca) or drop off at  
CE Media, 4928 Hankin Street, Thorsby.

*\*Only those selected will be contacted for an  
interview*

*\*Applications will be accepted until position is filled.*

**WWW.CEMEDIA.CA**

## 2024 Day trip events



What would summer look like without a few day trips of adventure planned for the youth in your life? Register for one or all of these exciting events!

- ▶ Edmonton Corn Maze and Rabbit Hill Summer Tubing – **July 26**
- ▶ Sassy G Farms – **Aug. 9**
- ▶ Activate and Movie – **Aug. 16**
- ▶ *Three convenient pick up and drop off locations!*

To register online, visit  
[leduc-county.com/recreation](https://leduc-county.com/recreation), email  
[RecPrograms@leduc-county.com](mailto:RecPrograms@leduc-county.com)  
or scan the QR code.







www.mikeshomesltd.com

## COMMUNITY EVENTS & info

### UPCOMING SPECIAL EVENTS (Breton, Thorsby, Warburg & Surrounding Areas)

**July 19 - Outdoor Summer Concert** **CANCELLED** Warburg Community Park from 7-10pm

**July 19 - Medicine Teachings** at the Thorsby Municipal Library at 6pm. Learn about the medicine plants that grow in our area.

**July 15-19 - Bus to Swim 2024** for youth ages 5+ at Drayton Valley Pool. Register at FCSS Breton [fcss@breton.ca](mailto:fcss@breton.ca) or FCSS Warburg [fcss@warburg.ca](mailto:fcss@warburg.ca)

**July 22 - A Dragon Safari Puppet Show** at the Warburg Pioneer Rec Centre from 1:30 - 3pm. Ages 3+ and families. \$5. Register at 780-848-2841 or e-transfer to [office@warburg.ca](mailto:office@warburg.ca)

**July 25 - Golden Spur Gymkhana 2024** in Breton. Gates Open 5pm, starts at 6:30pm. For more info email [goldenspurgymkhana@gmail.com](mailto:goldenspurgymkhana@gmail.com)

**July 28 - Pancake Breakfast** at Sandholm Hall (corner 616X & Hwy 778) from 8am -11am. For more info call 780-389-2381

**August 3 - Divine Liturgy** on Saturday at St. John The Baptist Ukrainian Catholic Church in Thorsby at 10:30 a.m. For further information, contact Dan at 780-789-3698

**August 8 - Family & Community BBQ** at the Warburg Cloverleaf Manor. Tickets \$5 (6 & under FREE). Please RSVP by July 24 to 780-848-7717.

**August 15 - Golden Spur Gymkhana Finals** - Gates open at 3:00pm and Gymkhana starts at 5:30pm. For any questions or information email [goldenspurgymkhana@gmail.com](mailto:goldenspurgymkhana@gmail.com)

**August 17-19 - Festivus of Gravel** - "Battle of Thor" themed - Gravel cycling starting and finishing at the Thorsby Arctic Spas Recreation Complex. Festival with bike shops, food and beer gardens. [www.stiedacycling.com/festivusofgravel](http://www.stiedacycling.com/festivusofgravel)

**August 17 & 18 - Calmar Days & Highway 39 Garage Sale** - Pancake Breakfast, Mega Market, Parade, and more...

**August 18 - Pancake Breakfast** at Sandholm Hall (corner 616X & Hwy 778) from 8am -11am. For info call 780-389-2381

**August 23 - Outdoor Summer Concert** at the Warburg Community Park from 7-10pm. Featuring Gregory Baldwin

**August 24 - Thorsby's Car & Truck Show n Shine** hosted by Lone Wolf Mechanical. 10am - 5pm. Featuring Mega Trucks, Car Crushing and Tug a War.

**August 24 - PBR Buckin at the Brook Bull Riding** at Sunnybrook Hotel / Hwy 39. To sponsor event or for more information email [sunnybrookwhf@gmail.com](mailto:sunnybrookwhf@gmail.com)

**August 25 - Stollery Lemonade Stand Day.** Ethen Sweet will

## Custom Built Homes

- Reliable Service - Affordable Pricing  
- Quality Workmanship



"You Dream It - We Build It!"

**MICHAEL JACOB**

**780.991.1008**

[michaelj@mikeshomesltd.com](mailto:michaelj@mikeshomesltd.com)

be selling lemonade at Sandholm Store for the Stollery Children's Hospital Foundation. Charitable receipts available.

**August 31 - 47th Annual Lakedell Fair.** Rain or Shine 7am - 4pm events throughout the day! Thursday, Friday and Sunday events scheduled as well. [www.lakedell.org](http://www.lakedell.org).

**September 6, 7, 8 - Carnival coming to Thorsby.** More details to follow. Hosted by the Thorsby & District Chamber of Commerce.

**September 7 - Spirit of Thorsby / Thor Statue Reveal** hosted by the Thorsby & District Chamber of Commerce. Community market, beer gardens, dunk tank & more. Details to follow.

**September 12 - Warburg Community Awareness Night** in Warburg School west parking lot. Email [fcss@warburg.ca](mailto:fcss@warburg.ca) or call 780-848-2828

**September 21 - Gun Show** at the Warburg Community Hall. 10am to 4pm. Tables \$25, Admission \$5. Call Darryl at 780-983-4669 or Charlie at 780-898-4147

**September 24 - Community Information Night, Celebrate Breton & Chili Cook Off** at the Breton Community Hall. Register with Breton FCSS 780-696-3636 or [fcss@breton.ca](mailto:fcss@breton.ca).

**October 4 - George Canyon** is at the Eleanor Pickup Arts Centre in Drayton Valley at 7:30pm. Tickets available at [www.ticketpro.ca](http://www.ticketpro.ca), 1-888-655-9090 & Value Drug Mart.

**October 19 - Genesee Pumpkin Festival** hosted by the Genesee Ag Society. Enter your prize pumpkin, sunflower, vegetable or baking. Contact Joanne 780-940-7229

**October 19 - Harvest Fest at Strawberry Hall** - a family friendly fun filled afternoon with games, supper and dance - phone 780-789-2446 for supper and dance tickets



### Thorsby Seniors Crib Results!

#### July 15th Crib scores:

1st Place: Marion Snider - 935  
2nd Place: Brenda Lickoch - 934  
3rd Place: Eugene Senio - 925  
*High Hand of 21 - Elaine Blair*

**CONGRATULATIONS ALL WINNERS!**

#### Next crib event:

**Monday, July 22nd at 1:30 pm**  
**Thorsby Seniors Center / Admission: \$6**





## PROFILE

The Town of Thorsby is located on Highway 39 west of the City of Leduc.

## CONTACT

Mayor Darryl Hostyn 780.975.0789  
CAO Donna Tona 780.981.7208

## WEBSITE:

[Thorsby.ca](http://Thorsby.ca)

## EMAIL:

[dhostyn@thorsby.ca](mailto:dhostyn@thorsby.ca)

[dtona@thorsby.ca](mailto:dtona@thorsby.ca)

## PRESS RELEASE

**JULY 16, 2024**

# BULK WATER STATION

THE TOWN OF THORSBY IS PLEASED TO ANNOUNCE

**JULY 16, 2024, 1500 HRS**

The Town of Thorsby and Spa Logic have signed a lease agreement to enable Thorsby to build and operate a bulk water station, to serve Thorsby and the surrounding community.

This bulk station will service vehicles on 2 sides, will have state-of-the-art communication and billing systems and will be cash free. Flow Point Environmental Systems of Morinville Alberta will build the station. The New station will have:

1. Side One- 3" overhead rack
2. Side Two- 3" camlock side mount
3. Side Two - ¾" RV mount for filling RV water tanks
4. The Site will be fenced and will be accessible via of Highway 778

Thorsby thanks the cooperation of **Arctic Spas and Fortis Alberta** for their support in this venture and their generous enthusiasm in assisting us with the success of this project and for prosperity within our region.

**THORSBY IS PROJECTING AN OCT 01, 2024, START UP BUT KEEP WATCH ON THE TOWN'S WEBSITE FOR UPDATES.**

## PROGRAMS & REGULAR EVENTS (Thorsby, Warburg & Surrounding Areas)

**\*\*Please note - all events are subject to change - some activities are not running during the summer but have not notified us. Please email us at [media@community39.com](mailto:media@community39.com) if we have incorrect information.**

### MONDAYS

**Crib** at the Thorsby Seniors Centre every Monday at 1:30pm  
**TOPS (Take Off Pounds Sensibly)** - Mondays at 9am, Thorsby Seniors Centre. Jane 780-789-3789 or Cheryl 780-848-7673

### TUESDAYS

**Family Bingo** - Tuesdays @ 6:30 at the Mulhurst Legion #246.  
**Music Jam Session** on 4th Tuesday of the month at the Calmar Seniors Centre 1-4pm. 4916 - 50 Ave  
**Pickle Ball** at the Thorsby Arctic Spas Rec Complex from 9:30am - 11:30am  
**Seniors Bowling** - Tuesdays at the Thorsby Arctic Spas Rec Complex at 1pm (\$5)  
**16+ Rec Volleyball** drop in at Warburg School on Tuesdays from 7-9pm (\$2)

### WEDNESDAYS

**Busy Brushes** - Every Wednesday from 10-2pm at the Warburg Cultural Center. \$5/class. Call Linda 587-590-0378.  
**Cards** at the Warburg Seniors Centre at 1pm every Wednesday  
**English Language Conversation Circle** meets every Wednesday at 6pm at the Thorsby Municipal Library for those who wish to practice and improve their English language skills in a friendly informal setting.  
**Pickleball** - Every Wednesday from 7-9pm at the Thorsby Arctic Spas Recreation Complex  
**Songs For Toddlers** on Wednesdays at 1pm at the Warburg library.  
**Soup & Sandwiches** at the Thorsby Seniors Centre starting at 11:30am on the 2nd Wednesday of the month.  
**Soup & Sandwiches** at the Warburg Seniors Centre every 3rd Wednesday at 12pm except July & August (\$10)  
**Warburg Treasure's Thrift Shop** is Open Wednesdays from 10am - 4pm at the Warburg Community United Church.  
**Yoga at the Warburg Hall** - Until Aug 21. Every Wednesday Evening at 6pm. Added bonus child minding available if needed! Register at the Warburg Village Office 780-848-2828

### THURSDAYS

**Bingo** at the Thorsby Seniors Centre every Thursday at 7pm  
**Bus to Leduc from Cloverleaf:** (\$8) weekly on Thursday at 9:00am. Call Kim at 780-848-7717 to register prior to leaving.  
**Parent & Tot Drop In (Warburg)** - Thursday mornings from 9-11am in the Village of Warburg office basement.  
**Pickleball** at the Thorsby Arctic Spas Rec Complex from 9:30am - 11:30am  
**Pickleball** Thursdays from 6-8pm (\$2). Warburg School Gym. Register at the Warburg Village office or call 780-848-2828  
**Quilting at the Warburg Cultural Center:** on Thursdays from 10-4 contact Gail S at 789-995-2681

**Sandholm Square Dance Club** - on Thursdays 7 - 9:30pm at the Sandholm Hall. Contact 780-238-5844 or 780-389-2381.

**Thorsby Seniors Thrift Store** - Open Thursday, Friday & Saturday from 10am-3pm for July & August. 780-996-5131.

### FRIDAYS

**Community Socials** are held the last Friday of each month at the Mulhurst Legion #246 at 7pm

**Connect with Other Young People** on Fridays from 7-9pm Thorsby New Life Fellowship Church - Ages 11-18. Contact Katie at 780-241-0715 or [kpollard2007@outlook.com](mailto:kpollard2007@outlook.com)

**Fun with Friends Story time** at the Thorsby Municipal Library every Friday from 10:30am - 11:15am.

**Thorsby Seniors Thrift Store** - Open Thursday, Friday & Saturday from 10am-3pm for July & August. 780-996-5131.

**Walk, Connect, Thrive** - Every Friday at 9:30am throughout the summer. Meet at Warburg Village Office.

**Warburg Legion** - Open Fridays from 5-10pm. Pub Night on the 3rd Friday of the month. Call Max 780-263-0350 for info.

### SATURDAYS

**Farmer's Market** at the Mulhurst Bay Community Hall every Saturday 11-3pm. Contact Carol 587-920-2065.

**Pie & Coffee** from 1pm - 4pm at the Warburg Museum on the first & third Saturday of every month (July). Or arrange a tour through Susie 780-848-2507 or Joan 780-621-7174

**Thorsby Seniors Thrift Store** - Open Thursday, Friday & Saturday from 10am-3pm for July & August. 780-996-5131.

### SUNDAYS

**Sunday School** at St. Matthew's Lutheran Church the 2nd Sunday of mth at 10:30am. Contact Ebeline at 780-389-4100

## SUMMER PROGRAMS & PROGRAMS FOR KIDS

**Thorsby Summer Programs** - Register online (link on Facebook "Arctic Spas Recreation Complex" email [recreation@thorsby.ca](mailto:recreation@thorsby.ca) or call 780-789-4041 for more info.

**Warburg Summer Passport Series** - Events and bus trips all summer long. Contact Warburg FCSS 780-848-2828 or [fcss@warburg.ca](mailto:fcss@warburg.ca) for more information.

**PD Day Hockey Camp** at the Thorsby Arctic Spas Recreation Complex. Check out "Small Town Skills" on Facebook or [www.smalltownskills.ca](http://www.smalltownskills.ca). Registration closes 14 days before each camp or when it's full. First camp is September 20, 2024.

*Community Events & Information  
is FREE to advertise*

## Pick up your FREE "Community Connections" booklet

at the Breton Village Office, Brazeau County Office, CE Media Thorsby, Leduc County Office, Thorsby Town Office, Thorsby Arctic Spas Rec Complex and the Warburg Village Office

Or go online to [www.community39.com](http://www.community39.com)

**You will find information on our local communities including maps, contacts, rental facilities, community groups and supports and more....**

# SPIRIT OF 'THOR'SBY

*Community Festival & Statue of Thor Reveal*

September 7, 2024  
4pm - 8pm

*6pm - Ceremony & Statue Reveal*

Downtown Hankin Street in Thorsby

*Fun for Everyone!*

*Beer Gardens  
Entertainment  
Fundraising BBQ*

*Dunk Tank  
Market  
Local Vendors*

*Community Groups  
Businesses  
Glitter Tattoos*

**Thorsby & District  
Chamber of Commerce**  
*"Business Building Communities"*

For questions, to book your tent space,  
or to donate please contact:

Shawna Ofstie  
780-499-6006  
[thorsbyabchamber@gmail.com](mailto:thorsbyabchamber@gmail.com)

Market Vendors please email [clsoapco@hotmail.com](mailto:clsoapco@hotmail.com)



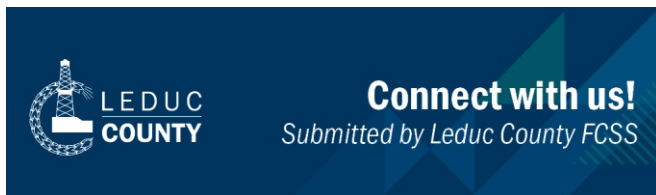
You don't want to miss the fair!



**Coming to Thorsby**

Friday, September 6 3-11pm  
Saturday, September 7 noon - 11pm  
Sunday, September 8 noon - 5pm





## Mental health versus mental illness: what's the difference?

While mental health and mental illness are often used synonymously, they do have different meanings. Everyone has **mental health** just like they have physical health, and it describes overall well-being. **Mental illness** is a diagnosed condition. People with a mental illness diagnosis can still have good mental health; people with no diagnosed mental illness can still have poor mental health. Either way, there are resources and support available.

### What to do in times of crisis

Our mental health affects how we feel, how we think and how we act. It's important to take care of ourselves and know where to find help when we, or someone else, needs it.

**Always call 9-1-1 in an emergency.** If someone is a danger to themselves or others, getting the right kind of help quickly is vital.

For serious mental health concerns, there are several crisis lines available as listed below.

**Access 24/7**  
780-424-2424

Provides 24/7 telephone support, in-person assessment, crisis outreach and patient stabilization.

**Mental Health Help Line**  
1-877-303-2642

Provides a 24/7 confidential service that offers support, information and referrals to Albertans experiencing mental health concerns.

**Suicide Crisis Helpline**  
9-8-8

Whether you are thinking about suicide or worried about

someone else, call or text **9-8-8** toll free, any time — lines are open 24/7/365.

**Distress Line**  
780-482-4357 (HELP)

Provides 24/7 confidential, non-judgmental and short-term crisis intervention, emotional support and resources to people in crisis or distress, as well as to family, friends and caregivers of those in crisis.

Need more crisis resources? Scan the QR code or visit [www.leduc-county.com/community-family](http://www.leduc-county.com/community-family) today.

Dial **211** for social resources 24/7. Have questions? Call 1-888-301-FCSS for answers.

## Wenham Valley Pet Cremation



**Geneva Rodin**

(780)621-3531

geneva\_rod@hotmail.com

*"Our pets leave footprints  
on our hearts"*

**Warburg, AB**



KEEPING YOU COMFORTABLE ALL THROUGH THE YEAR

Furnace & Air Conditioners  
**Your Local HVAC Company**

**\*Now is the  
time to  
upgrade to a  
96% efficient  
furnace**

*\*Now offering  
financing OAC*

office  
**780-637-5339**  
cell  
**780-964-4390**

**Offices in Warburg & Edmonton**  
[www.actionheatcool.ca](http://www.actionheatcool.ca)



## Dawn Heisler

780-619-2564 (cell)

780-986-2900 (office)

email: [dawnheisler@remax.net](mailto:dawnheisler@remax.net)

[www.dawnheisler.remax.ca](http://www.dawnheisler.remax.ca)

# RE/MAX

## Real Estate

Independently Owned and Operated

### BUCK LAKE



2 separate suites! Great investment or recreational property. Lake view, 1/2 acre. 5 bed, 2 bath, oversized garage ~~\$439,000~~ **\$423,000**

### THORSBY

Fully renovated bungalow on 2 lots with garage/workshop. Finished basement. **E4395808 \$195,500**



### 160 ACRES



Fully treed quarter with home near Winfield. 2 bedroom + den, bathroom. **E4386717 \$525,000**

### WARBURG

2 bedroom, 1 bath, large kitchen bungalow. Detached garage. **E4385911 \$165,000 \$160,000**



### WARBURG

Bungalow on large lot, single garage, 2 bedroom, partially finished basement, metal roof, fenced. **E4396625 \$129,000**

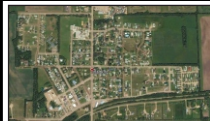


### 160 ACRES



Near Winfield, treed and pasture, rolling hills, natural springs, fenced. **E4392382 \$450,000**

### VACANT LOTS IN WARBURG



75' wide serviced lots on pavement. 3 left to choose from. **\$40,000**

### BUCK LAKE

0.7 acre 2nd row lot with power, shed **E4377533 \$115,000**



Warburg  
Public Library

[www.warburglibrary.ca](http://www.warburglibrary.ca)

## UPDATE

Submitted by Gail O'Neil

Ph: 780-848-2391 / Fax: 780-848-2296

[warburglibrary@yrl.ab.ca](mailto:warburglibrary@yrl.ab.ca)

the Library is also on FB and Instagram

**OPEN Monday - Thursdays 10am - 5pm  
Friday - Sunday CLOSED**

**Kompany Family Theatre presents: A Dragon Safari:** Imagine that! A Dragon on Safari! There will be stories, songs and adventures and knowing Dragons. They'll want to take lots of friends along! At The Pioneer Recreation centre in Warburg on **Monday July 22, 1:30-3 pm.** (especially suitable for young audiences, 3 years old plus and families)

The Library is excited to announce the Youngest **Volunteer/ Staff Member, Kierra Mayr**, Staff is looking forward to what She will bring to the library in terms of Programs for Youth and Young Adults.

**A small empty backpack was left at Warburg Library**, if you can identify the color, please come down and claim this item.

**The Lego take and make is cancelled until the Fall.**

*Enjoy this beautiful Summer weather with a good read from Your local Library.*



## BEETTAM ACRES Market Garden

**FRESH, CHEMICAL FREE  
PRODUCE ALL SUMMER  
LONG!**

Seven Days a Week  
9:00am to 7:00pm

1576 TWP 490 Sunnybrook AB  
[www.beettamacres.ca](http://www.beettamacres.ca)

# DYCK INSURANCE AGENCY LTD.



Farm Insurance—Home Insurance – Auto Insurance – Travel Insurance – Commercial Insurance

**“Service is our business”**

Supporting the Thorsby area since 1997

All your insurance needs under one roof.

**More options, More choices, More savings**



-Among Others-


**Calmar, Thorsby, Wetaskiwin**

4915 50 ave, Calmar  
780-985-3650

4905 Hawkin St, Thorsby  
780-789-2424

5105 47 Ave, Wetaskiwin  
780-352-9222





4901-48 Avenue, Thorsby, AB  
780-789-3808

**Thorsby Library  
updates & reminders:**

*Please visit us during our weekday hours of Tuesday 10am - 6am,  
Wednesday & Thursday 12pm - 6pm, Friday 10am - 5pm*

**PLEASE NOTE:**

**WHILE HEAT WARNINGS ARE IN EFFECT, THE  
LIBRARY HOURS ARE AS FOLLOWS:**

**Tuesday to Friday, 9am - 2pm**

**IF THE TEMPERATURES INSIDE THE LIBRARY  
REACH 26C (79F) THE LIBRARY WILL CLOSE FOR  
THE DAY.**

**Accessibility,**

It is a word we hear a lot, but what does it really mean?

At the library, we look at accessibility in many ways.

The first, and most obvious is physical accessibility. Can anyone reasonably get into and around our collection? With a stair free entryway, and wide aisles, our collection is reasonably physically accessible. Anyone who wishes can enter and navigate around our library.

But there is much more we do to ensure our collection is truly accessible.

One barrier is in fact print. To make sure that we have resources for patrons for whom print is a challenge, we have been able to use our very generous Senior's grant from Leduc County to expand our audiobook and large print resources.

Online, through our website [www.thorsbypublib@yrl.ab.ca](http://www.thorsbypublib@yrl.ab.ca) we have a range of accessibility options available through our e-resources, including tools to modify font size, backgrounds etc. and audiobooks. Audiobook Cloud, CELA, Cloud Library, Hoopla, Libby, and Read Alberta E-Books all provide a wealth of resources to make books accessible to all our readers.

Another barrier is language itself. As Thorsby welcomes more newcomers from around the world, we have become aware that English-only resources do not meet their needs.

We are using a grant from the Province of Alberta to expand our collection of bilingual and world language resources, and have added books to our collection, mostly children's books, in Cree, French, Ukrainian, Tagalog, Mandarin and Spanish with more to come. Our adult patrons can find newspapers and magazines in 64 different languages on the PressReader e-resource.

The final barrier is diversity, or a lack thereof. As we build and renew our collection, we are careful to ensure that we include authors and sources from a wide range of communities and cultures. It is vitally important that our library reflects the wonderful, growing, changing community that is Thorsby.

Our patrons can find resources on our shelves that are written by familiar voices telling familiar stories, and by voices that open a window on experiences very different from their own. The children of Thorsby can be sure of finding books with children who look "just like me", and also children who don't.

Accessibility is very much a work in progress, a journey not a destination, and at the library we are proud to share this journey with our amazing community.

**On to programming!**

**This Friday, July 19, come to the library for 6:00 for Medicine Teachings, part 2.** We will be discovering and learning about the medicine plants that grow in our area under the guidance of the Creating Hope Society. Come prepared for an evening of exploration outdoors. Registration is appreciated but not required for this program.

**July 24, 10:00 - 11:30, Mad Science Adventures of Northern Alberta** will be taking us on a Space Voyage for . At this time, the program is full, but call the library at 780-789-3808 if you are interested in being put on the waiting list.

Also on **July 24, the English Language Conversation Circle continues to meet every Wednesday at 6:00 pm** for those who wish to practice and improve their English language skills in a friendly informal setting.

See you at the library!

# LONE WOLF MECHANICAL



**WE RENT TRAILERS & NOW TOOLS**

**DAILY & WEEKLY RATES!**

**CALL FOR RATES, TOOL LIST & PRICING**

FOR  
RENT

- 2 - 16ft cargo trailers
- 1 flat deck gooseneck trailer
- 1 utility trailer
- 1 -16ft bumper pull horse trailer
- 1 trailer set up with 1000L tank to haul potable water

We Also Have:

Truck & Driver Available To Haul Fifth Wheel Trailers  
(Truck only not for rent) / Fifth Wheel Hitches (Hitch Only)

We Can Also Provide:

Dollies, Moving Blankets, Trailer Ball Hitches, Tarps,  
Ratchet Straps & Tie Downs for a Small Rental Fee.

*Call For Pricing & Price List*

**587.643.WOLF (9653)**

[lonewolfmechanic@hotmail.com](mailto:lonewolfmechanic@hotmail.com)

**4813 - 50 Ave Thorsby**

[www.lonewolfmechanic.com](http://www.lonewolfmechanic.com)



**FOR SALE****780-696-2249**

# www.MooresRealty.ca

An entire team of REALTORS® working for you  
Trent Wirsig, Terence Barg, Justin Hatt, Cathy Hatt

For more info  
on these & other  
properties visit  
our website at  
**MooresRealty.ca**

**BRETON****\$234,900**

4 bed, 1 bath home on .27 acre lot backing onto ravine in Breton. Recent upgrades: vinyl windows, 35 yr shingles, laminate flooring

**WINFIELD****\$120,000**

1½ storey 3 bedroom 1 bath with updates, metal roof, vinyl siding & windows, tarp garage, shed, greenhouse, raised garden bed

**BRETON****\$249,000**

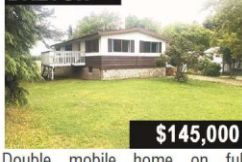
For your business! Office building on main street, attractive street frontage, wheel chair access. Front reception area, office areas

**BRETON****\$599,999**

14 acres, towering spruce, attractive home, covered screened deck, attached breezeway, double garage, shop, tarp shed, storage shed.

**BRETON****\$599,900**

5.68 acres. 6 bedroom, 2.5 baths, finished basement. Many upgrades in recent years. Attached double garage with infloor heat, hip roof barn with natural gas & 220 wiring

**BRETON****\$145,000**

Double mobile home on full basement, backs onto ball diamond. Affordable family living.

**BRETON****\$110,000**

Affordable, wheel chair accessible, double wide 2 bed 1 bath mobile home on its own lot. Single car detached garage

**ALDER FLATS****\$199,900**

2 bed, 1 bath. new flooring, counters, backsplash, doors, SS appliances, lighting, furnace, electric panel, Hardie Board siding

**BUCK LAKE****\$550,000**

Greystones - 3 bedroom, 2 bath custom built home, 26x56 garage with bonus room, paving stone firepit area... and more

**BUCK LAKE****\$339,900**

0.5 acre, recently completely 2 bed, 2 bath cabin with loft. Short walk to Buck Lake & boat launch. Water well & septic new 2022.

**BUCK LAKE****\$185,000**

.6 acre lakeview lot comes with a fully furnished 4 season mobile home, 4 storage sheds, two gazebos, firepit, pool and more.

**WINFIELD****\$399,900**

Over 90m of Modeste Creek frontage. 59.82 acre parcel has approx. 9 acres open with the balance being a mix of spruce.

**BRETON****\$650,000**

159. ARCE FARM - 3 bed 2 bath home. Covered deck, hot tub, cozy enclosed porch with wood stove & storage room. Workshop with concrete floor, portion heated, 2 livestock shelters, 2 Ritchie stock waterers. Pasture, spring fed pond

**WINFIELD****\$319,900**

5 acres. 3 bed 2 bath 2003 home. Upgrades HWT, shingles. Storage shed, work shop, partially fenced, firepit, playhouse

**MULHURST BAY****\$249,000**

5.07 acre parcel, partially treed, triple bay, insulated garage, Pond. Your own private campground or build your dream home

**WINFIELD****\$850,000**

158 acres, creek, mature forest, cabin, peace & tranquility! East Poplar Creek flows thru this land. on no exit road.

**WARBURG****\$835,000**

145 acres Recreational - Forest, trout pond, 1920 sq ft home. 1 bed, 3 bath. Titan Wall construction, 32x32 heated workshop, dog run, pigeon coop, Private setting. Annual surface lease revenue.

**VACANT LOT**

Large lot backs onto golf course with 159 ft of golf course frontage. Natural trees for privacy. Newer neighborhood, no time restrictions to build, modular homes are acceptable (restrictive covenant applies). GST included  
**BRETON \$49,900**

**BUCK LAKE****\$395,000**

Sunset Bay - 2 bed 2 bath home, main portion has ICF walls, addition is wood framed. Home has in floor heat. Double garage - heated

**OUR TEAM OF REALTORS**

Trent Wirsig 780-202-0140 Terence Barg 780-621-6767  
Justin Hatt 780-621-3695 Cathy Hatt 780-898-0729

Moore's Agri-Trade Ltd, Breton, AB

780-696-2249

## Rural Real Estate



# FESTIVUS OF GRAVEL

## Gravel Cycling Event coming to Thorsby and Western Leduc County!

*submitted by Alex Steida, OLY, Event Co-director, Festivus of Gravel*

Get ready for Festivus of Gravel on Saturday, August 17, a day of gravel cycling starting and finishing in Thorsby at the Arctic Spas Recreation Centre. The theme is "The Battle of Thor". There are 4 distances for the riders who take part in this event:

### **295 km and 190 km distances start together at 07:00**

- West through Leduc County, into Brazeau with an aid station at Village golf course. Then across the river into Parkland, coming back on Burtonsville Rd up to Keephills. Coming back south to cross the river at Genesee and turning east on 505A towards Strawberry Creek Raceway.

### **105 km riders start at 08:00**

- West to the first aid station outside of Cody & Kari Cropley's house - thank you guys! This group will turn north on RR 40 past Creekland, east on 504, north on RR 33 past Genesee Lake, dropping below the power lines into the farming flats before coming back up to join to 190 km route on hwy 770.

### **55 km riders start at 10:00**

- Riding West on TWP 492, then North on RR 21 all the way down to the Pawlick's property and down to the river's edge where we will come back up through Jay's raceway track for an Aid Station stop. All the routes will ride from here east on TWP 504 over to RR 281 to go south, across 39 and back to the finish past the stockyards.

Each group of riders will start together and ride 4 km out of town traveling west to access the gravel roads. They will travel west on TWP 492, west on Hwy 39 and turning right at the RR 14 turn off. The groups will ride neutralized behind the peace officer for these 4 km.

On the return trip, all groups will follow the final 30 km back from Strawberry Creek Raceway, riding east on TWP 504, south on RR 13, winding through the ravines to turn south on RR 281 to cross 39, turning west on TWP 494 and coming into town past the stockyards on 492A. They'll turn left onto 47th Street to get back to the Rec Centre.

All riders must follow the rules of the road, stopping at stop signs and most importantly, giving way to the right at uncontrolled intersections. They will also be instructed to ride single file on paved sections of highway.

At the finish line, we are planning a festival of cycling with bike shops and their partners showing their wares. There will be a food as well as a beer garden for any and all - riders and spectators alike.

Digital maps can be found here:

[www.ridewithgps.com/collections/2710810](http://www.ridewithgps.com/collections/2710810)

**What exactly is a gravel cycling event?** Gravel cycling is all about installing a sense of adventure as participants self-navigate a prescribed course over gravel roads. Each rider is provided with a GPS file for their specific course that they follow.

**What kind of bike do participants use:** generally, a bike is suited for gravel roads if it has wider tires similar but a bit smaller than what you would find on a mountain bike. Mountain bikes can work although not as efficient as purpose-built gravel bikes.

Full details can be found on the event website at:

[www.stiedacycling.com/festivusofgravel](http://www.stiedacycling.com/festivusofgravel)

Event updates on Instagram at: @festivusofgravel







📍 4917 Hankin St. Thorsby AB, T0C 2P0

# TES HIGH JUMP

**Thorsby Elementary Grade 5/6 sweep the  
Leduc County High Jump Grand Prix**

*submitted by Emily Andersen*

At the end of May, Grade 5 and 6 students were able to try out to be on the TES High Jump Grand Prix team. The Grand Prix was held in Beaumont where 42 boys and 39

girls, from all over Leduc County met to compete. The students from TES managed to nearly sweep the competition, so much in fact that the Vice Principal received a text from a former co worker saying "man can kids from Thorsby ever jump!"

Thank you to Ms. Zadderey for coaching them and accompanying them to the event. Congrats to all the athletes that represented Thorsby and did such a terrific job!



## Boys

**Carsen Belair** - 1st place (142 cm)

**Kyler Fox** - 3rd place (136cm)

**Blaze Torkelson** - 3rd place (136 cm)

**Rhett Warren** - 3rd place (136 cm)

## Girls

**Rowan Andersen** - 2nd place (139 cm)

**Kinlee Gellert** - 8th place (136 cm)

**Jenna McBride** - 16th place (118 cm)

**Kassidy Taylor** - 26th place (106 cm)



**50/50**  
ADD-ON



AGLC #: 690948



**WINFIELD &  
DISTRICT AG  
SOCIETY  
PRESENTS**

## *Arctic Spas* **HOT TUB RAFFLE**

**Win an Arctic Spa AURORA Hot Tub!!**

(Includes delivery & setup)

**AGLC #: 690940**

**100 FOR \$100  
20 FOR \$50  
4 FOR \$20  
1 FOR \$10**



Scan the QR  
Code for Tickets

Early Bird Prize: Ooni Koda 16  
Gas Powered Pizza Oven

Grand Prize: Arctic Spa  
AURORA Hot Tub

50/50 Cash Raffle Add-On

Early Bird Draw: June 29th, 2024  
Grand Prize Draw: August 11th, 2024  
50/50 Prize Draw: August 11th, 2024

[www.winfieldagsociety.com](http://www.winfieldagsociety.com)

**Rafflebox Ticket Sales**

# WARBURG SEED CLEANING CO-OP LTD.



Phone No. 780-848-2365

[warscp@gmail.com](mailto:warscp@gmail.com)

[www.warburgseed.com](http://www.warburgseed.com)

“like us” on Facebook

Hours: 8:00 am to 4:30 pm Mon to Fri

*Cleaning services for various seed varieties*

*90 ft. scale*

*Bagged milling wheat, Bagged Hulless  
barley available for soups, stews, etc.*

*Various varieties of bagged & bulk feed - rolled or  
whole. We only sell what we clean here and don't  
add supplements, etc. Our rolled mixes include 40-  
30-30 (40% wheat, 30% barley & 30% peas) &  
50/50 barley/oats or make up your own custom  
mix. Our 40-30-30 mix is used to feed a variety of  
animals & birds including wild birds*

*Need a tote bag... we have small  
& large tote bags for sale*

*Black oil sunflower seeds*

*Flax*

*Various sizes of tarps, straps & accessories in  
stock or we can order what you need. We can also  
order greenhouse plastic.*

*Lawn seed & lawn & garden fertilizer*

*Nitrogen & PowerRich fertilizer & bagged forage  
seed*

*Various varieties of Pedigreed seed available*

*Retailer for Proven Seed, Inland Plastics, Union  
Forage (swath grazing) & PowerRich Fertilizer*

# WARNKE DRILLING (2014) LTD.

780-352-5555

[stylke@xplornet.com](mailto:stylke@xplornet.com)

Water Well Drilling, Maintenance, Well  
Shocks, Pressure systems, Filtration,  
Treatment & Supplies

Serving from Camrose to Drayton Valley



780-361-8234

[shawbrenent@outlook.com](mailto:shawbrenent@outlook.com)

Excavating  
Mulching (Hi Flo)  
Skidsteer  
(111 HP track)  
Tree Shearer  
Manure Piling



## BRETON TIRES AND TOW

*For all of your tires, towing, parts,  
accessories, and windshield needs!*

*We have vehicle, recreation, implement, and trailer tires!  
Standing tall in Community, Service and Reliability.*

**AMA Provider**

Open Mon-Fri 8-4:30  
Towing 24/7

5403 47 Street  
780-696-3757



## Auto Body Works

**Auto Body Repair**

**NO INSURANCE JOBS**

**Clayton Rumohr & Dale Babiak**

[info.autobodyworks@gmail.com](mailto:info.autobodyworks@gmail.com)

780-975-5408

PLEASE CALL OR TEXT FOR APPOINTMENT



# County of Leduc No. 25

## Facts and Fun

### Continued from front page

(Statistics based on 1991 data unless otherwise indicated.  
Statistics do not include data from incorporated centres.)

- ~ The Edmonton International Airport encompasses 3,108 hectares (7,680 acres), serves approximately 2 million passengers per year, and currently provides about 1,500 jobs.
- ~ Tourism is becoming an economic focus in the County of Leduc, encouraged by the proximity to the Edmonton
- ~ International Airport, Highway 2 and Edmonton. Our ethnic diversity can offer a small taste of home for international travellers.
- ~ The Genesee Power Project covers 23 square kilometres, and currently employs 268 workers, including construction staff.
- ~ The Nisku Business Industrial Park boasted 479 developed hectares (1,184 acres) in 1988. As of 1990, a total of 417 building permits have been issued in the Park, representing approximately \$125 million in construction expenditures.
- ~ The County of Leduc administers 65 kilometres of water mains, 2.5 kilometres of sanitary sewers and 125 fire hydrants (primarily in the Nisku Business Industrial Park, the Vistas residential subdivisions, and the hamlets and locals).
- ~ The County of Leduc provides nesting areas for over 150 types of birds.
- ~ Native artifacts and fossilized wood are commonly found in the County of Leduc. The bank of the North Saskatchewan River (Genesee area) is a well-known fossil bed and has been declared a restricted area.
- ~ There were 10 operating gas plants in the County of Leduc in 1990.
- ~ Currently, 1,417 gas or oil wells are operating in the County.
- ~ Most oil products extracted from County of Leduc lands are marketed as follows: crude oil can travel through the inter-provincial pipeline to the Toronto/Sarnia area for refinement; some crude oil also makes its way to the Strathcona Refinery; natural gas heats homes in Edmonton and area, and propane is transported in tanker cars to markets across Canada and in the northern United States.
- ~ The population of the County of Leduc is gradually aging as noted in statistics compared from 1976 to 1986. The number of children in the 0 to 14 age group declined from 31.4 percent to 25.9 percent of the population. Ages 15 to 64 increased from 62.9 percent to 67.3 percent, and 65 and over increased from 5.7 percent to 6.7 percent.
- ~ There are 646 more males than females in the County of Leduc as per the 1990 census.
- ~ Approximately 87 percent of those residing in the County of Leduc occupy single family dwellings, with an average occupancy rate of three persons per home.
- ~ Over half (52.7 percent) of the County's population have resided in the municipality for over 10 years; 68 percent have resided in the County for over five years.
- ~ There have been several significant name changes in the County, some of which are detailed below:
  - ~ Wizard Lake was originally known as Conjuring Lake.
  - ~ The original Native name for Pigeon Lake was Woodpecker Lake.
  - ~ It is rumored that the local railway referred to Calmar as Calvary for a time.
  - ~ Telford Lake was originally known as Leduc Lake.
  - ~ Saunders Lake was known by locals as Blackmud Lake.
  - ~ The Native name for Battle River when translated literally means "fighting water". This river was the site of many battles between the Blackfoot and Cree Nations.
- ~ Did you know that the County of Leduc has its own version of quicksand? An 80-acre parcel of land in the Rolly View area records six to eight flowing springs. The area immediately surrounding these springs is very unstable, and livestock have disappeared into these seemingly bottomless holes.
- ~ Windmills were a common sight on the first homesteads in the central region of the County as they were used to provide motive power to pump water from deep wells.
- ~ The first running water in County homes was provided by gravity tanks. The tanks were installed on the second floor to provide pressure, and the pipes were often run through heat ducts thereby supplying warm water.

picture below from page 125 "County of Leduc History"



Edmonton International Airport, 1990.

# Darcy Powlik

**780-446-9700**

Office: 780-986-2900

[www.darcypowlik.com](http://www.darcypowlik.com)



**RE/MAX**  
Real Estate Leduc

## RESIDENTIAL, FARMS & ACREAGES

**PIGEON LAKE** - 40 Acres with mature treed yard and view of Pigeon Lake, 1882 sq ft., 2 storey with finished basement, 24'x44' heated garage, pasture, hayland, all services ~~\$789,000~~ **\$769,000**

**RURAL LEDUC COUNTY (48327 Rge Rd 33)** - Large 2421.90 sq/ft fully finished bungalow that is just one of the many buildings on this 24.09 acre property. The heated pool building is the largest and is surrounded by bunk houses, gazebo, BBQ building and more. \$4500+/- yearly oil revenue! ~~\$674,000~~ **\$624,900**

**RURAL WETASKIWIN COUNTY (S14D13 TWP RD 480)** - Private beautiful 160+/- acres with 1012 sq/ft fully finished home, 60x40 fully finished shop, and a private Lake! **\$999,000**

**THORSBY** - Newer bi-level, 1036 sq ft., 3 bedroom, double detach garage with in floor heat, heated driveway **\$297,900**

**WARBURG** - 5.39 Acres on HWY 39, well treed mature yard, 1200 sq ft. house, double detach garage, older outbuildings ~~\$379,000~~ **\$369,000**

## COMMERCIAL

**MULHURST** - 39.5' x 100' vacant lot located water front on Pigeon Lake at Mulhurst Bay. Zoned Urban Commercial. Adjoining lot for sale as well. **\$179,900**

**TELFORDVILLE (2047 Twp Rd 495 Rd 495 A)** - This 35.12 acres hosts a 1506 sq/ft house with a 20x28 attached garage with a creek behind it and sheltered from the industrial yard. 50x29 heated and insulated quonset with power and a cement floor. A 40x80 Fully finished Shop metal clad inside and out with 2 overhead doors (12x14 and 16x14), heated, insulated, power, mezzanine, 3pc bathroom, with offices and lunch room in the front. A 50x80 drive through shop (18x14 doors) with power, heat, fully insulated with an mezzanine, spray booth, and office with two more overhead doors off the side. A 12x16 power shed/office with 200 amp 3 phase power and a 40x14 open faced metal storage shed. **\$1,250,000**

**THORSBY** - Mini storage business and office building. Storage units are all rented. Land and buildings **\$299,900**

## RAW LAND & VACANT LOTS

**BRIGHT FUTURE ESTATES (40 26555 Twp 481)** - Bright Future Estates is located south of Calmar close to Wizard Lake. Lot 2. Very private 3.31 acres in a natural treed setting. **\$159,000**

**THORSBY** - 5 acre matured yard site right at the entrance to Thorsby **\$159,900**



Children's  
Miracle Network

**MIRACLE  
HOME**  
Contributor

Helping kids at



STOLLERY  
CHILDREN'S  
HOSPITAL  
FOUNDATION

**"NOBODY SELLS MORE REAL ESTATE IN THIS AREA!"**

**Meier Unreserved Live Auction  
For Scott Knull**

**Saturday July 27, 10AM**

**49361 Range Road 24 Warburg (Leduc County)**

**Directions: From Sunnybrook, West on Highway 39,**

**Turn North Range Road 23 Watch For Signs**

**Viewing: Friday July 26, 10am to 7pm, Sat. 8am To Sale Time.**

**Trucks-Farm Equipment:** 2012 Dodge Ram 1500 Crew Cab, 2003 Dodge Ram 1500, 14' X 16' Log Building, Toro 52" Zero Turn Lawn Mower, 1966 Chev Truck, Massey Harris 44 Special, Farm All Tractor, Hydraulic Post Pounder, John Deer Hay Wagon, Grain Wagon, 4 - 1600 Bushell 4 Ring Grain Bins, Antique Manure Spreader, Wood Wagon, 2 Fuel Tanks c/w Stands, Quad Yard Sprayer, Bale Rack, Much More.

**Livestock Cattle Equipment-Bridge Timbers and Power Poles:** 30 Livestock Free Standing Panels and Free Standing Windbreaks, Morand Cattle Squeeze w/ Headgate, Round Bale Feeders, 12 Ft Texas Gate, Medi-Dart Crossbow Kit, Cattle Oiler, Bridge Timbers 6"x14" & 4"x12", Power Poles, Feed Tubs.

**Tools-Antiques-Household:** Drill Press, Stihl Chain Saws, Air Compressor, 2 Tool Chests, Assortment of Hand Power Tools, Steel Welding Table, Bench Grinder, Propane Heater, Homelite Pressure Washer, Tap & Die Set, Ramps, Ladders, Electric Weed Trimmer, Propane Bottles, Solar Pannel, Garden Sprayers, Fence Wire Stretcher, Wheel Barrel, Culverts, Tin, Anvil, Bench Vice, Pipe Stands, Western Art and Decor, Bull Horns, Lariats, Copper Kettle, Wood Crate, Sofas, Recliner Love Seat, Kitchen Table, Much More Too Much To List.

**Terms & Conditions:** Cash, Interact, (Credit Cards with 4% Charge) . No Cheques. 10% Buyer's Premium Applies. Sales Subject to Additions and Deletions. All Items Sold as Is Where Is - No Warranties. Full Settlement Sale Day. All Items Must Be Removed Monday July 29, 5pm . No Exceptions.

**Sale Conducted by Meier Industrial Auctions Ltd**  
4740-57 St Wetaskiwin AB. Lic # 322638  
Edmonton Office: 780 440-1860 - 780 446-4360  
Visit [www.meierauction.com](http://www.meierauction.com) for All Upcoming Auctions

# SENIORS CONCERT SERIES

*submitted by Cindy Miller*



**Strawberry Hall would like to thank Leduc County for the partnership for the Senior Concert Series .**

Kim Gates and his musically talented guest entertained the audience with old favorites and his own original work.

Coffee & snacks and visiting along with music (in a cool hall) what more could a person ask for!

Watch for the date for next summer.

## Kinsella Ranch Tour

The Roy Berg Kinsella Research Ranch is a modern livestock handling facility housing around 850 cattle. Join us for a tour to learn about ongoing projects such as virtual fencing, grazing effects, and living labs. Lunch is provided - everyone's welcome!

- ▶ **Date:** Tuesday, August 6, 2024
- ▶ **Time:** 9 a.m. to 3:30 p.m.
- ▶ **Location:** Roy Berg Kinsella Research Ranch
- ▶ **Cost:** \$20
- ▶ **Registration:** online at [www.leduc-county.com/kinsella-tour](http://www.leduc-county.com/kinsella-tour) or contact Kim at **780-387-6182** for help with registration. Deadline to register is July 24.
- ▶ **Bussing:** A bus is departing from Millet at 7:30 a.m. and returning around 5 p.m. for any participants who wish to travel with the group.



UNIVERSITY  
OF ALBERTA



## JAW's Backhoe Service Ltd.

**(780) 898-2512**

**New services dug in    Grade for foundation**  
**Waterline installation and repair**  
**Hydrant and cattle waterers**  
**Vibratory post pounding**  
**Compaction and plate tamping**  
**Integrity digs**  
**Cattle guards and culverts cleaned**  
**Dump trailer services**  
**Mini skid steer with 3' bucket and forks**  
**Grass cutting with 60" zero-turn mower**  
**Fully insured. Located in Warburg**





CLAYTON SWAN, B.A., M.A., J.D.  
BARRISTER & SOLICITOR



(+1) (825) 322 2500  
(+1) (825) 322 2501  
frontdesk@w5law.ca  
www.w5law.ca  
5120 51 Ave. Warburg, AB T0C 2T0  
Box 400 Warburg, Alberta T0C 2T0

Innovative. Local. Affordable. Available.

General practice law firm located in Warburg  
for all your legal needs, including but not limited to:

- Corporate Law
- Estate Planning and Administration
- Real Estate
- Notary Public

**NOW OPEN!**

Call, email or visit  
our website  
to make an appointment.

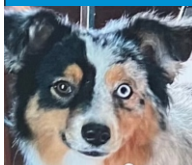
**NAILS**

**THORSBY**

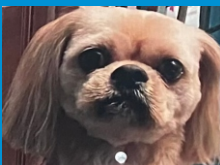
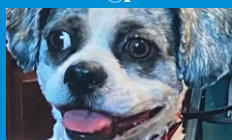
**PUPPY LOVIN GROOMING**



**780-518-3943**



maxinehs@persona.ca



49019 Range Road 22, Sunnybrook, AB

**We Repair:**

- Truck Transport • Industrial • Heavy Equipment •
- Agriculture • Automotive • School Buses •

**780.789.3322 1.855.789.3322**

**www.nitronut.com**

**Check out our Facebook page!**

**Andrew  
Boitchenko, MLA**

Drayton Valley-Devon



**Constituency Office**

5136B - 52 Avenue, Box 7272  
Drayton Valley, AB T7A 1S5

Phone 780.542.3355

DraytonValley.Devon@assembly.ab.ca

**HP Electric Inc.**

*Residential - Commercial - Farm  
Trenching - Scissor Lift*

**Blair Hennes**

780-686-0418

**Curtis Peck**

780-278-7614

hpelectricinc@gmail.com

**Pre-Harvest Machinery Consignment Auction**

**RIMBEY SALES YARD**

**AUGUST 16TH, 2024 TO AUGUST 21ST & 22ND**

**Rimbe Sales Yard - 3940 50th Ave**

**Phone: (403) 843-2747 Office**

**Allen B. Olson - (403) 783-0556 - Justin Janke - (780) 515-0888**

We are now accepting Listings for this Sale.

Any items prelisted by July 17th will be  
included in our Sales Posters, Newspaper &  
Radio Advertising, Web Page, Social Media and  
extensive mailing lists.

**Selling equipment to all four Western  
Provinces and the Northern USA.**



**Allen B. Olson Auction Service Ltd.**

**Rimbe Office - 403-843-2747 - Toll Free - 1-855-783-0556**

**Hwy #16 East Office - 780-208-2508**

**Rimbe & Hwy #16 East, Alberta - License No. 165690**

**Email: abolson@telusplanet.net - Website: www.allenolsonauction.com**

# GAETZ LANDING II – GRAND OPENING

Leduc Regional Housing Foundation Media Release July 5, 2024

Leduc, AB – Leduc Regional Housing Foundation (LRHF) celebrated the opening of Gaetz Landing II, an addition to the existing Gaetz Landing, today. Gaetz Landing II provides an additional twenty-four (24) one-bedroom units on to the existing building. Fifty (50) per cent of those units are dedicated to women fleeing violence and twenty-five (25) per cent of the units are fully accessible. The rent is based on 60% of MMR (Median Market Rent) which is \$680/month at this time.

Gaetz Landing is a mixed-use building located within walking distance of Main Street in the City of Leduc. The additional twenty-four (24) one-bedroom units complement the already existing fourteen (14) one-bedroom near market/affordable housing units and two (2) commercial rental units.

*"Leduc Regional Housing Foundation is very proud of the housing solutions and services that we offer throughout the seven municipalities of the Leduc Region. We are excited about the opening of an additional twenty-four (24) units in the City of Leduc. It is the first addition of units for Leduc Regional Housing Foundation since 2015. These units will help to meet the increasing demand for affordable housing solutions for individuals in our communities."* - Margot Hagarty, Executive Director.

Gaetz Landing II was made possible through the collaboration and commitment of funding from Leduc Regional Housing Foundation and all three levels of government - municipal, provincial and federal.

The breakdown of funding for this project is as follows:

- \$4.7 million under the Projects Stream of the third round of the Rapid Housing Initiative
- \$2 million of joint funding through the Affordable Housing Partnership Program (AHPP)
- \$500,000 from the Municipalities of the Leduc Region
- \$1.4 million from Leduc Regional Housing Foundation

Leduc Regional Housing Foundation is thrilled to share that the construction cost for the Gaetz Landing II project has come in well under budget.

*"We need to quickly build more affordable homes across Alberta and throughout the country. The Rapid Housing Initiative does just that. Projects like the Gaetz Landing in Leduc provide safe and secure homes for everyone, especially our most vulnerable Canadians."* – Randy Boissonnault, Minister of Employment, Workforce Development and Official Languages

*"Alberta is proud to have partnered with the Leduc Regional Housing Foundation and other levels of government on building more affordable homes in the Leduc community. These 24 new units will provide homes to those who need them most, including women fleeing violence and*

*individuals with disabilities. Stepping through the doors of Gaetz Landing will signify a fresh start and a brighter future for many Albertans in need of support."* - Jason Nixon, Alberta Minister of Seniors, Community and Social Services

*"Leduc Regional Housing Foundation is excited to be continuing to grow its housing portfolio. The addition of twenty-four (24) units will contribute to the provision of housing options for individuals and families of the Leduc Region. We are grateful for the support from all three orders of government. We look forward to more partnerships like this to assist us to grow the much-needed housing stock so we can meet the increasing demand for affordable, accessible and appropriate housing in the Leduc Region."* - Kathy Barnhart, Board Chair.

The grand opening ceremony got underway today at 10:00 a.m. with Margot Hagarty, Executive Director, Leduc Regional Housing Foundation acting as Master of Ceremonies. Presentations were made by Mike Lake, Member of Parliament – Edmonton Wetaskiwin, Brandon Lundy, Member of the Legislative Assembly – Leduc Beaumont, Rod Loyola Member of the Legislative Assembly – Edmonton Ellerslie, Tanni Doblanko, Mayor – Leduc County, Laura Tillack, Deputy Mayor - City of Leduc, Nathan Netelenbos, Deputy Mayor - City of Beaumont, Gurk Dhanoa, Councillor – Town of Devon, Sean Carnahan, Mayor – Town of Calmar, Cory Gilbert, Councillor – Town of Thorsby, Dwayne Mayr, Mayor – Village of Warburg, Lorne Fundytus Central Region Director - Alberta Seniors & Community Housing Association and Kathy Barnhart, Councillor City of Beaumont and Chair of the Leduc Regional Housing Foundation Board.

## Quick Facts

- LRHF provides quality housing solutions and services to individuals and families in seven municipalities - Leduc County, City of Leduc, City of Beaumont, Town of Devon, Town of Calmar, Town of Thorsby, and Village of Warburg. A variety of housing solutions and services are available including supportive living (lodge), seniors self-contained, near market housing (affordable housing), community housing (rent geared to income), and a rent assistance benefit program.

## Breton Denture Centre

5012 - 50 Ave. Breton

**780-696-9696**

### Our Services Include:

- Free Consultations
- Same Day Relines
- Complete & Partial Dentures
- 1 Hour Denture Repairs
- Dental Assistance for Seniors
- Referral to a Dentist or Surgeon



**Join Us Again in Completing that Beautiful Smile!**



# Laurie's Laughs



**A police recruit was asked during an exam, "What would you do if you had to arrest your own mother?" The reply, " Call for backup".**

**I will ignore him all day**



**So he knows I am mad**



**YOU KNOW WHEN  
YOU BUY A BAG  
OF SALAD & IT  
GETS ALL BROWN  
& SOGGY?**

**COOKIES DON'T  
DO THAT**



Where do bad rainbows go?

To prism. It's a light sentence, but it gives them time to reflect.

6		8	7				9	
7			1	4			6	
			5					
		4	6		8		2	1
3	7							
		6		9				
4				6	3	9		
		9					1	
8						4		

Answers will be published in the next issue!



# Community<sup>39</sup> Enterprises

a division of CE Media Signs & Promotional

## CONTACT US

phone: 780-434-7446

email: [media@community39.com](mailto:media@community39.com)

or come see us at 4928 Hankin Street in Thorsby

[www.community39.com](http://www.community39.com)

## THE BRETON BOOSTER

### - Published every Wednesday -

Pick up locations in Breton, Warburg,  
Thorsby, Winfield and Alsike.

#### (deadline Monday at 10am before publication)

Classified/Payment Drop off available at Breton IDA, Warburg  
Village Office & CE Media Signs & Promotional in Thorsby.

## PRICING

Classified Ads are \$5.00 (includes GST) for 2 weeks  
(max. 4 lines or approx. 30 words)

### 1/8 PAGE

3.4167" wide x 2.28" tall

\$20 + GST

\*\*multi-ads - \$18.00 + GST

### 1/4 PAGE

3.4167" wide x 4.6" tall

\$29 + GST

\*\*multi-ads - \$27.00 + GST

### 1/2 PAGE

7" wide x 4.6" tall OR

3.4167" wide x 9.25" tall

\$40 + GST

\*\*multi-ads - \$38.00 + GST

### FULL PAGE

7" wide x 9.25" tall

\$60.00 + GST

\*\*multi-ads - \$57.00 + GST

## CONNECT39

Thorsby, Warburg & Area NEWS

### - Published every Friday -

Pick up locations in Thorsby, Leduc, Calmar,  
Pigeon Lake, Warburg & Alsike

#### (deadline Wednesday at 10am before publication)

Classified/Payment Drop off available at Breton IDA, Warburg  
Village Office & CE Media Signs & Promotional in Thorsby.

## PRICING

Classified Ads are \$7.50 (includes GST) for 2 weeks  
(max. 4 lines or approx. 30 words)

### 1/8 PAGE

3.4167" wide x 2.28" tall

\$30 + GST

\*\*multi-ads - \$27.00 + GST

### 1/4 PAGE

3.4167" wide x 4.6" tall

\$43.50 + GST

\*\*multi-ads - \$40.50 + GST

### 1/2 PAGE

7" wide x 4.6" tall OR

3.4167" wide x 9.25" tall

\$60 + GST

\*\*multi-ads - \$57.00 + GST

### FULL PAGE

7" wide x 9.25" tall

\$90.00 + GST

\*\*multi-ads - \$85.50 + GST

**\*\* Qualify for multi-advertising price by running your ad for three weeks or more in one or  
both papers consecutively OR if you are a non-profit group or team.**

### Pick up our FREE "Community Connections" booklet

at the Breton Village Office, Brazeau County Office, CE Media  
Thorsby, Leduc County Office, Thorsby Town Office, Thorsby  
Arctic Spas Rec Complex and the Warburg Village Office

Or go online to [www.community39.com](http://www.community39.com)

**You will find information on our local communities  
including maps, contacts, rental facilities, community  
groups and supports and more....**

### DID YOU KNOW?

Our papers can be viewed online & in  
color at [www.community39.com](http://www.community39.com)

If you'd like to get a link to the paper  
in your inbox each week you can  
subscribe online or email  
[media@community39.com](mailto:media@community39.com)



Community Events,  
Programs, Meetings  
& Articles are FREE

"little papers...BIG RESULTS"

# Easy is always on hand.

Open your freezer to many easy meals made especially for seniors, delivered for free\*.



\*Some conditions may apply.

Locally owned by Chetan and Roshni Bahl

**Get your FREE Menu**

**780-666-2336**



[www.hearttohomemeals.ca](http://www.hearttohomemeals.ca)



[www.facebook.com/HeartToHomeMealsCanada](https://www.facebook.com/HeartToHomeMealsCanada)



**We accept Veteran Affairs Allowances and offer Special Diet Options**